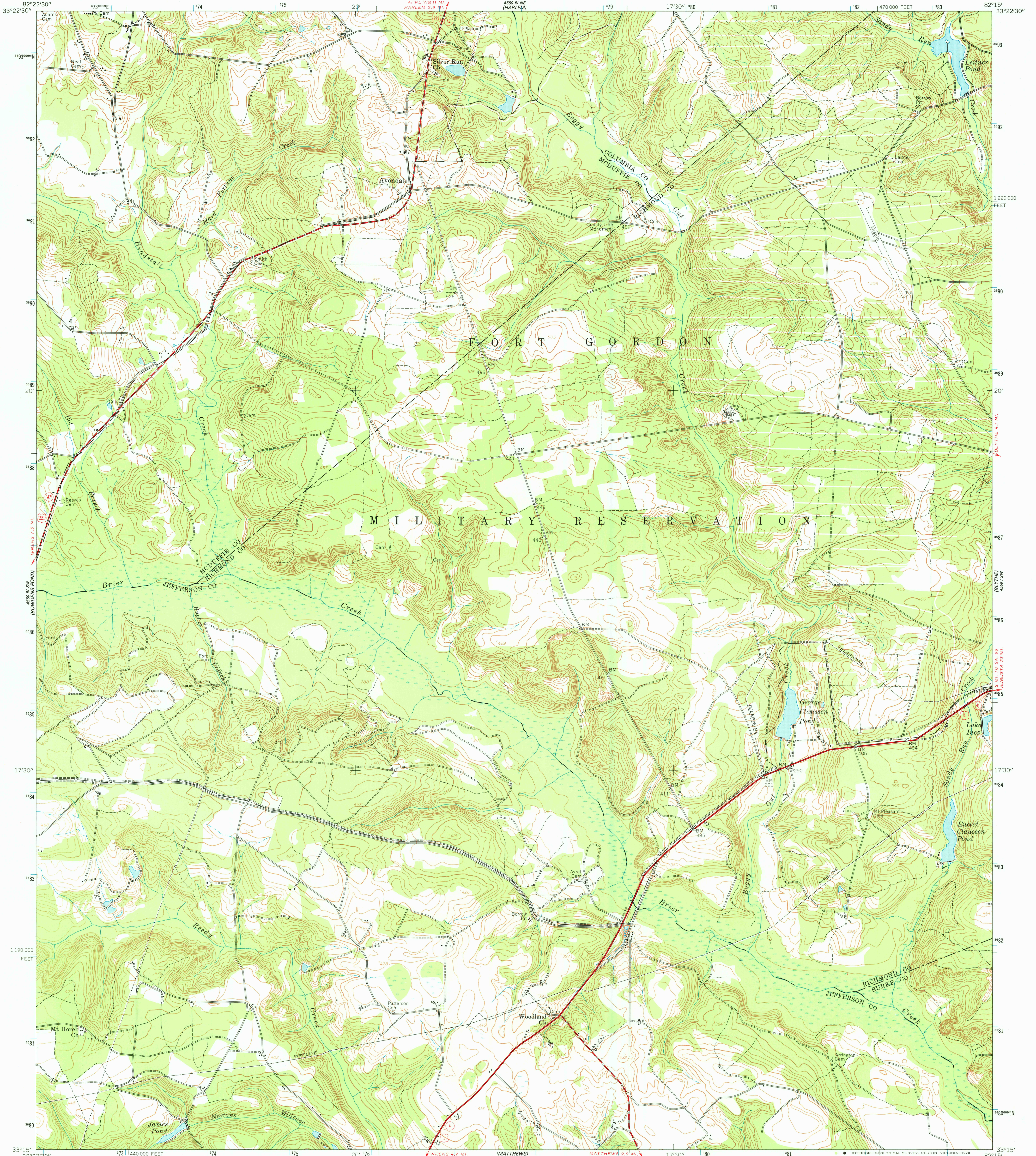
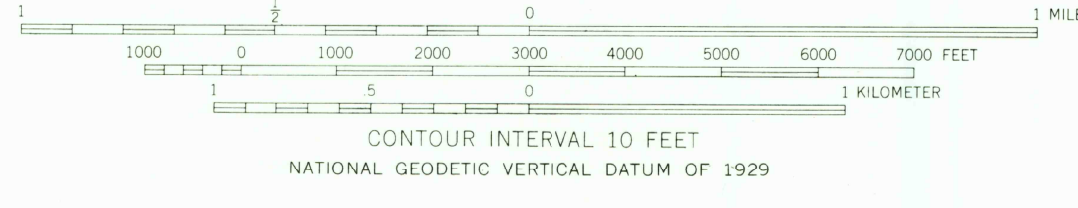
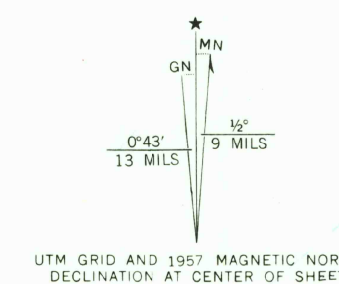


(TERRACE SW EAST)

(TERRACE SW WEST)



Mapped by the Army Map Service
Published for civil use by the Geological Survey
Control by USGS, USC&GS, USCE, and
Georgia Geodetic Survey
Topography from aerial photographs by photogrammetric methods
Aerial photographs taken 1947
Culture and drainage revised from aerial photographs
taken 1956. Field check 1957
Polyconic projection. 1927 North American datum
10,000-foot grid based on Georgia coordinate system, east zone
1000-meter Universal Transverse Mercator grid ticks,
zone 17, shown in blue
Unchecked elevations are shown in brown



CONTOUR INTERVAL 10 FEET
NATIONAL GEODETIC VERTICAL DATUM OF 1929

THIS MAP COMPLIES WITH NATIONAL MAP ACCURACY STANDARDS
FOR SALE BY U. S. GEOLOGICAL SURVEY, RESTON, VIRGINIA 22092
A FOLDER DESCRIBING TOPOGRAPHIC MAPS AND SYMBOLS IS AVAILABLE ON REQUEST



| ROAD CLASSIFICATION | |
|---------------------|-----------------|
| Heavy-duty | Light-duty |
| Medium-duty | Unimproved dirt |
| U.S. Route | State Route |

AVONDALE, GA.
SE/4 HARLEM 15' QUADRANGLE
N 3315-W 8215/7.5

USGS
Historical File
Topographic Division
1957
JAN 06 1978
AMS 4550 IV SE—SERIES V945

1800