

48° 15' N  
100° 00' W

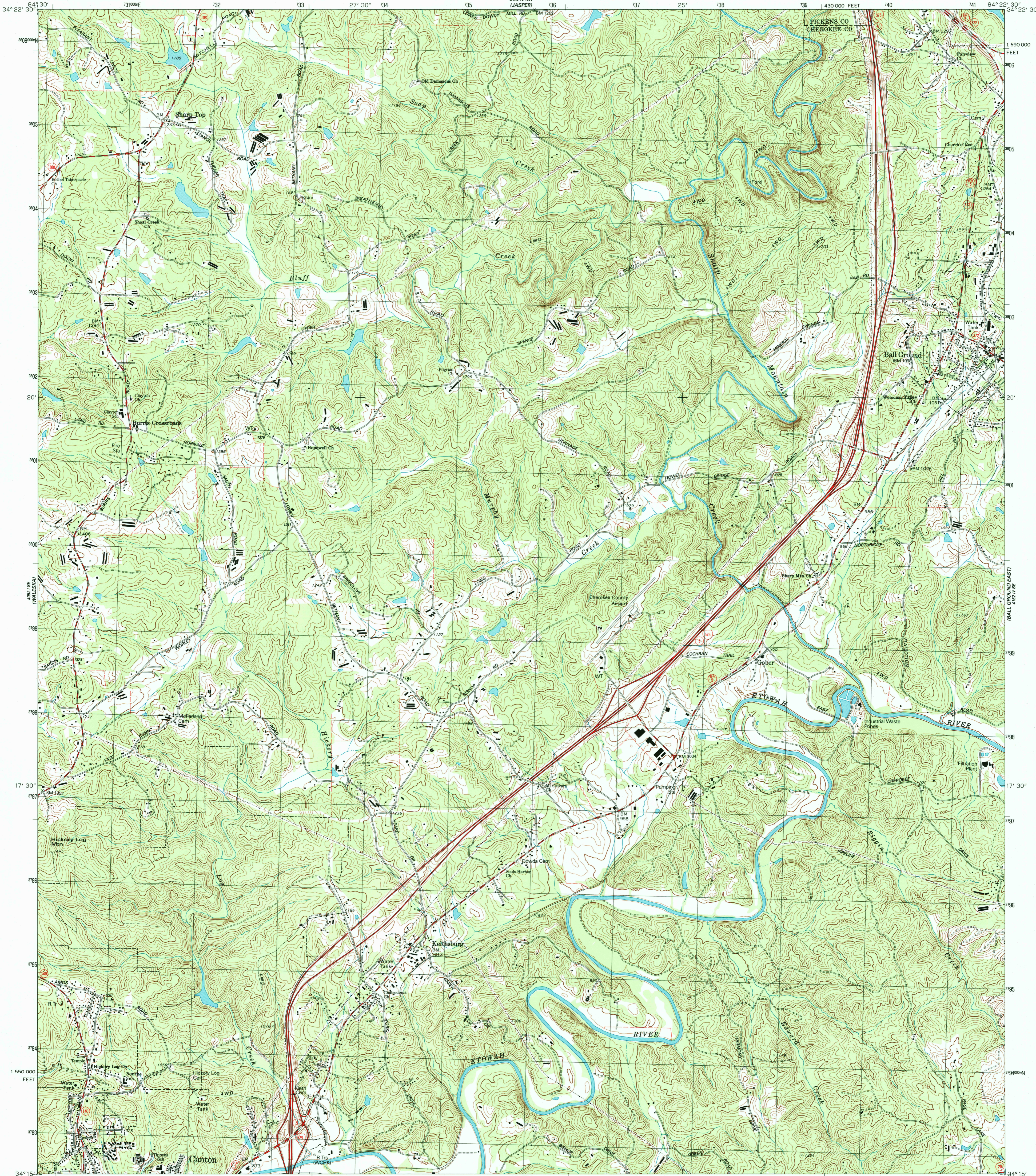


U.S. DEPARTMENT OF THE INTERIOR  
U.S. GEOLOGICAL SURVEY

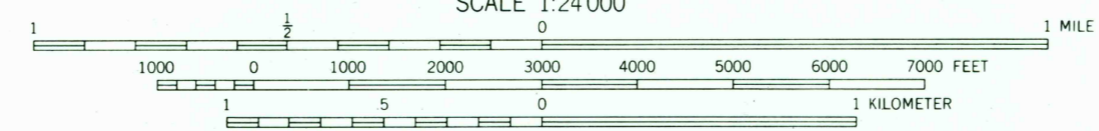


BALL GROUND WEST QUADRANGLE  
GEORGIA  
7.5 MINUTE SERIES (TOPOGRAPHIC)

48° 15' N  
100° 00' W



Produced by the United States Geological Survey  
Derived from imagery taken 1988 and other sources. Photosinspected using imagery taken 1997; no major culture or drainage changes observed. Survey control current as of 1991  
Boundaries, other than corporate, verified 1999  
North American Datum of 1927 (NAD 27). Projection and 10 000-foot ticks: Georgia coordinate system, west zone (transverse Mercator)  
1000-meter Universal Transverse Mercator grid, zone 16  
North American Datum of 1983 (NAD 83) is shown by dashed corner ticks. The values of the shift between NAD 27 and NAD 83 for 7.5-minute intersections are obtainable from National Geodetic Survey NADCON software



CONTOUR INTERVAL 20 FEET  
NATIONAL GEODETIC VERTICAL DATUM OF 1929  
TO CONVERT FROM FEET TO METERS, MULTIPLY BY 0.3048



ROAD CLASSIFICATION	
Primary highway, hard surface	Light-duty road, hard or improved surface
Secondary highway, hard surface	Unimproved road
Interstate Route	U. S. Route
	State Route

THIS MAP COMPLIES WITH NATIONAL MAP ACCURACY STANDARDS  
FOR SALE BY U.S. GEOLOGICAL SURVEY, P.O. BOX 25286, DENVER, COLORADO 80225  
A FOLDER DESCRIBING TOPOGRAPHIC MAPS AND SYMBOLS IS AVAILABLE ON REQUEST

RECEIVED  
DEC 3 1 1999

BALL GROUND WEST, GA.

1997

NIMA 4152 IV SW - SERIES V845



9 1780 60719 17352