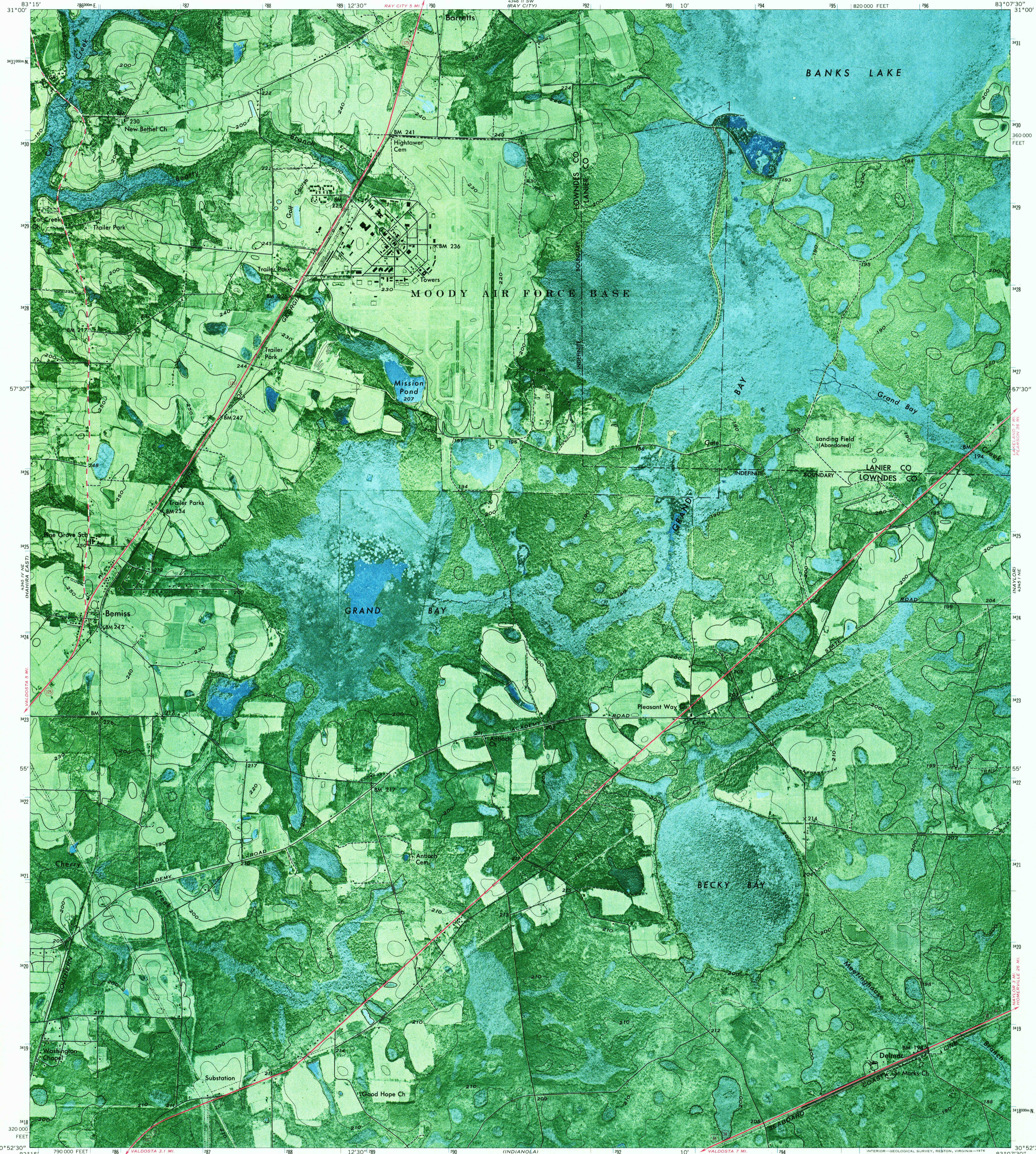


83° 15' 31" W (NEW LOS)

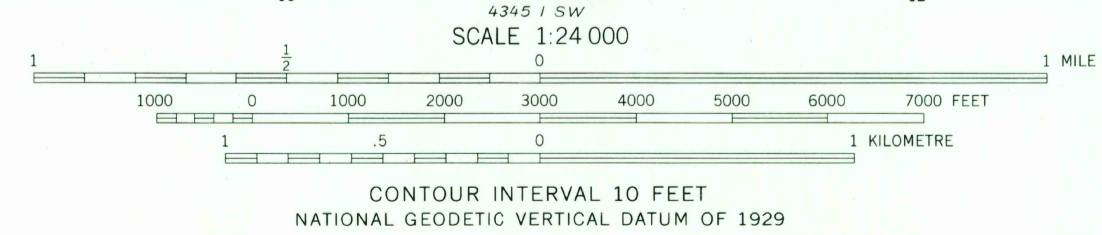
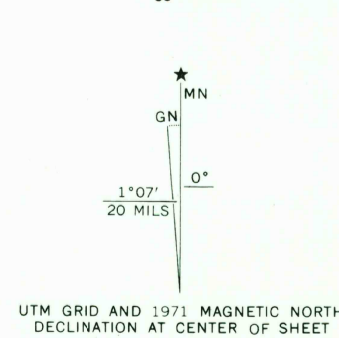
UNITED STATES
DEPARTMENT OF THE INTERIOR
GEOLOGICAL SURVEY

BEMISS QUADRANGLE
GEORGIA
7.5 MINUTE SERIES ORTHOPHOTOMAP (TOPOGRAPHIC)

83° 07' 30" W (NEW LAND)



Mapped, edited, and published by the Geological Survey
Control by USGS and NOS/NOAA
Orthophotomap prepared from aerial photographs taken January 1970
Topography by photogrammetric methods. Field checked 1971
Projection and 10,000-foot grid ticks: Georgia coordinate system, west zone (transverse Mercator)
1000-metre Universal Transverse Mercator grid ticks, zone 17, shown in blue. 1927 North American datum



ROAD CLASSIFICATION

Primary highway, hard surface	Light-duty road, hard or improved surface
Secondary highway, hard surface	Unimproved road
Trails	
Interstate Route	U. S. Route
	State Route

THIS MAP COMPLIES WITH NATIONAL MAP ACCURACY STANDARDS
FOR SALE BY U. S. GEOLOGICAL SURVEY, RESTON, VIRGINIA 22092
A FOLDER DESCRIBING TOPOGRAPHIC MAPS AND SYMBOLS IS AVAILABLE ON REQUEST

USGS
Historical File
Topographic Division
BEMISS, GA.
N3052.5—W8307.5/7.5
1971
AMS 4345 1 NW—SERIES V8450

APR 13 1971
338