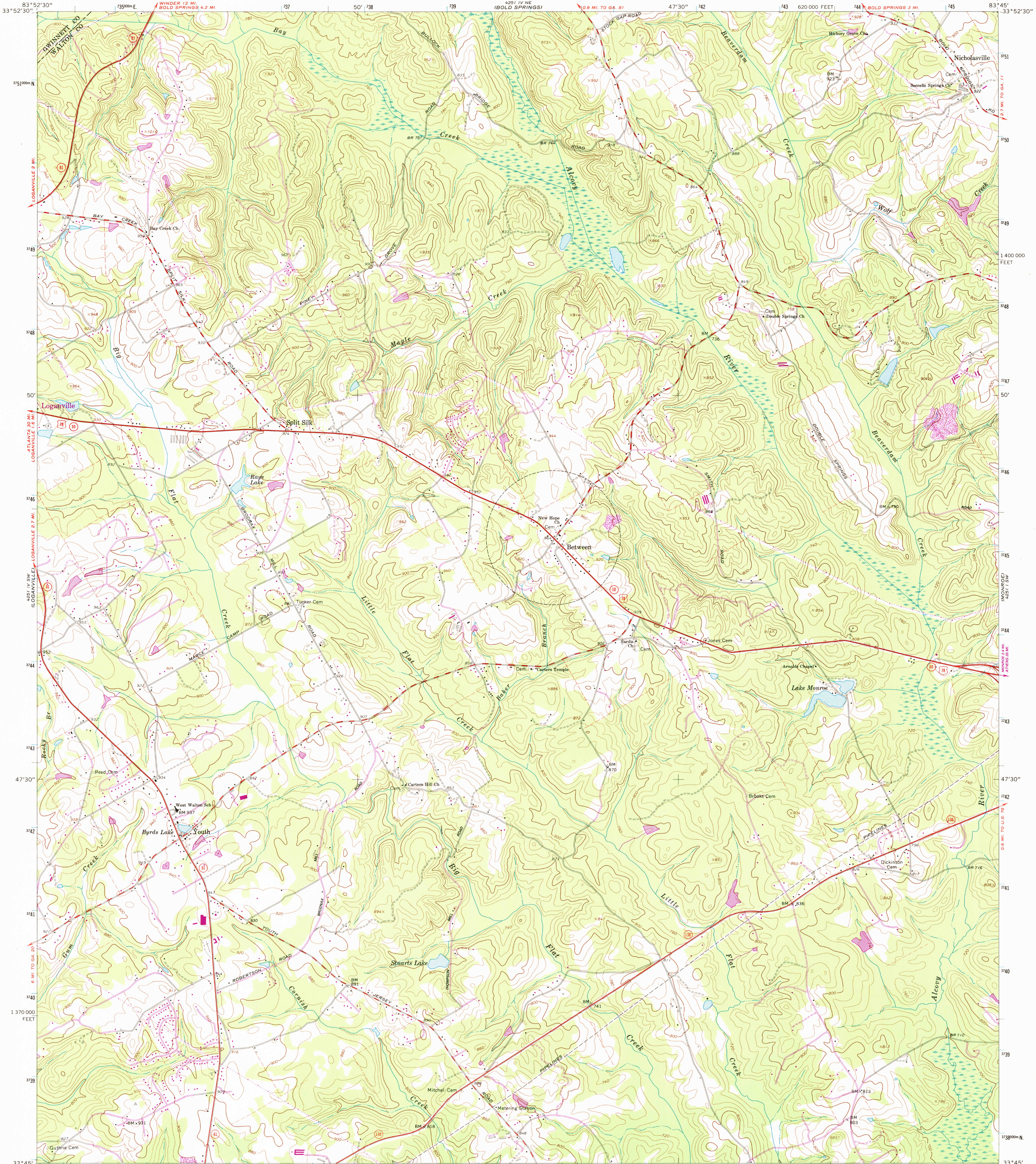


UNITED STATES  
DEPARTMENT OF THE INTERIOR  
GEOLOGICAL SURVEY

BETWEEN QUADRANGLE  
GEORGIA  
7.5 MINUTE SERIES (TOPOGRAPHIC)



Mapped, edited, and published by the Geological Survey

Control by USGS, NOS/NOAA, and Georgia Geodetic Survey

Topography by photogrammetric methods from aerial photographs taken 1962. Field checked 1964

Polyconic projection. 10,000-foot grid ticks based on Georgia coordinate system, west zone

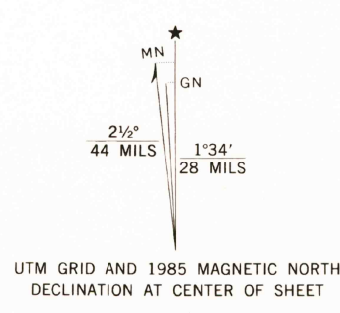
1000-meter Universal Transverse Mercator grid ticks, zone 17, shown in blue

1927 North American Datum

To place on the predicted North American Datum 1983

move the projection lines 11 meters south and 9 meters west as shown by dashed corner ticks

Fine red dashed lines indicate selected fence and field lines where generally visible on aerial photographs. This information is unchecked

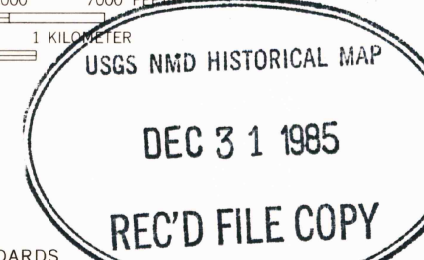


SCALE 1:24000

CONTOUR INTERVAL 20 FEET

NATIONAL GEODETIC VERTICAL DATUM OF 1929

THIS MAP COMPLIES WITH NATIONAL MAP ACCURACY STANDARDS  
FOR SALE BY U. S. GEOLOGICAL SURVEY, RESTON, VIRGINIA 22092  
A FOLDER DESCRIBING TOPOGRAPHIC MAPS AND SYMBOLS IS AVAILABLE ON REQUEST



QUADRANGLE LOCATION

ROAD CLASSIFICATION  
Heavy-duty ——— Light-duty ———  
Medium-duty ——— Unimproved dirt ———  
U. S. Route ——— State Route ———

BETWEEN, GA.  
33083-G7-TF-024

1964  
PHOTOREVISED 1985  
DMA 4251 IV SE-SERIES V845