

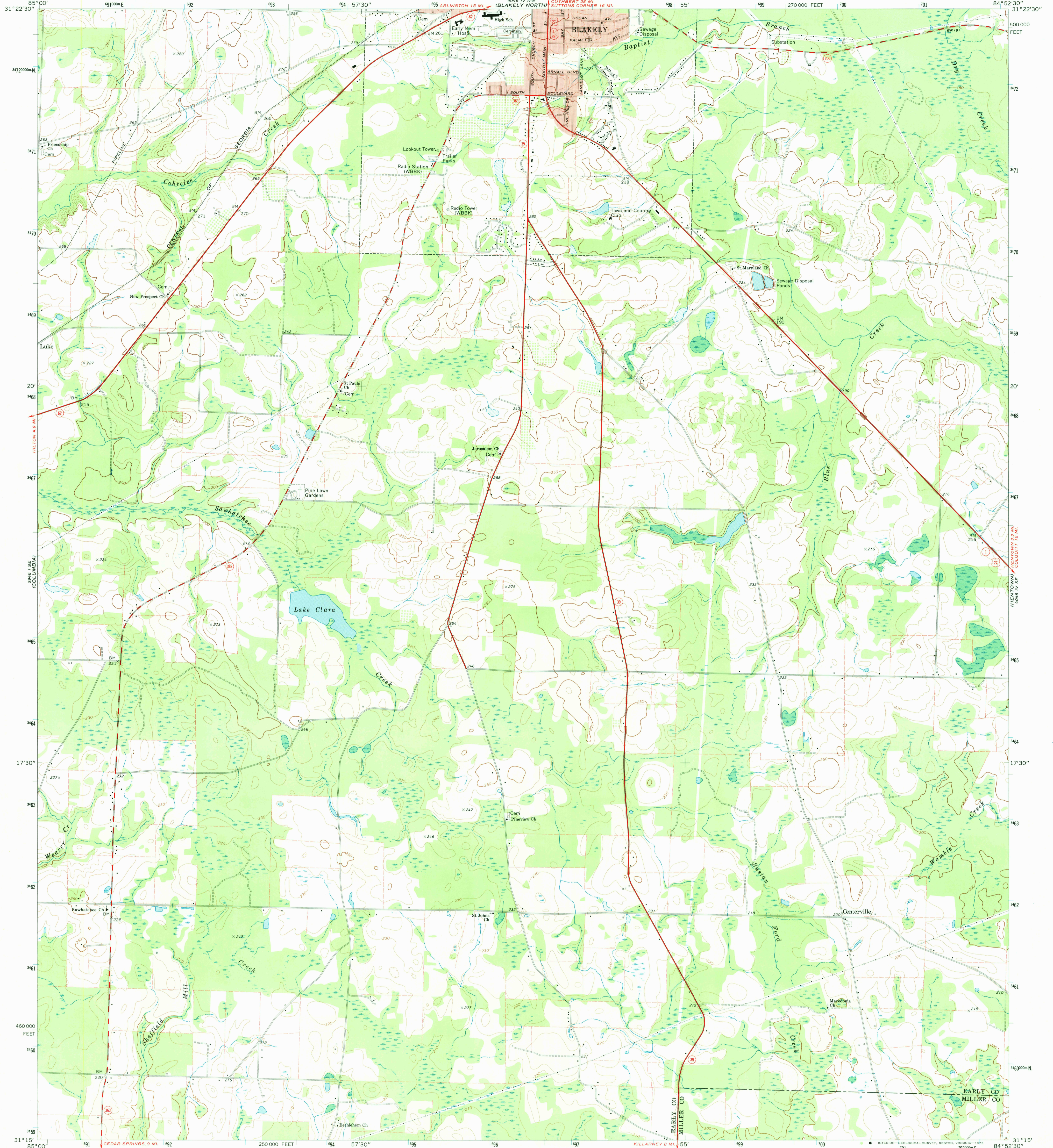
306 1/4 NE  
COLUMBIA NE

UNITED STATES  
DEPARTMENT OF THE INTERIOR  
GEOLOGICAL SURVEY

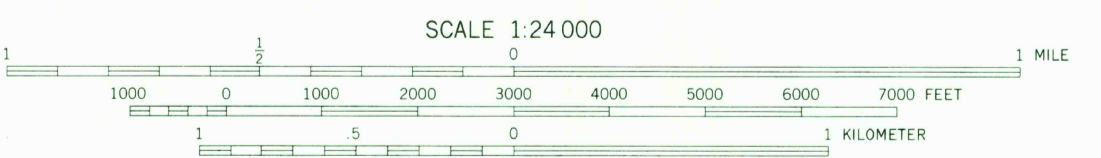
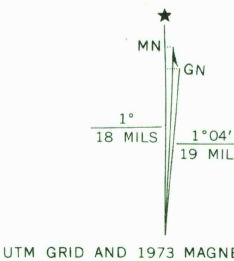
STATE OF GEORGIA  
DEPARTMENT OF NATURAL RESOURCES  
EARTH AND WATER DIVISION

BLAKELY SOUTH QUADRANGLE  
GEORGIA  
7.5 MINUTE SERIES (TOPOGRAPHIC)

306 1/4 NE  
COLUMBIA NE



Mapped, edited, and published by the Geological Survey  
Control by USGS, USC&GS, and Georgia Geodetic Survey  
Topography by photogrammetric methods from aerial photographs taken 1972. Field checked 1973  
Projection and 10,000-foot grid ticks: Georgia coordinate system, west zone (transverse Mercator)  
1000-meter Universal Transverse Mercator grid ticks, zone 16, shown in blue. 1927 North American datum  
Fine red dashed lines indicate selected fence and field lines where generally visible on aerial photographs. This information is unchecked  
Red tint indicates areas in which only landmark buildings are shown



CONTOUR INTERVAL 10 FEET  
NATIONAL GEODETIC VERTICAL DATUM OF 1929

THIS MAP COMPLIES WITH NATIONAL MAP ACCURACY STANDARDS  
FOR SALE BY U. S. GEOLOGICAL SURVEY, RESTON, VIRGINIA 22092  
A FOLDER DESCRIBING TOPOGRAPHIC MAPS AND SYMBOLS IS AVAILABLE ON REQUEST



ROAD CLASSIFICATION

Primary highway, hard surface	Light-duty road, hard or improved surface
Secondary highway, hard surface	Unimproved road
Interstate Route	U. S. Route
	State Route

BLAKELY SOUTH, GA.  
N3115-W8452.5/7.5

1973  
AMS 4046 IV SW—SERIES V845  
MAY 2 2 1975

USGS  
HISTORICAL FILE  
TOPOGRAPHIC DIVISION