

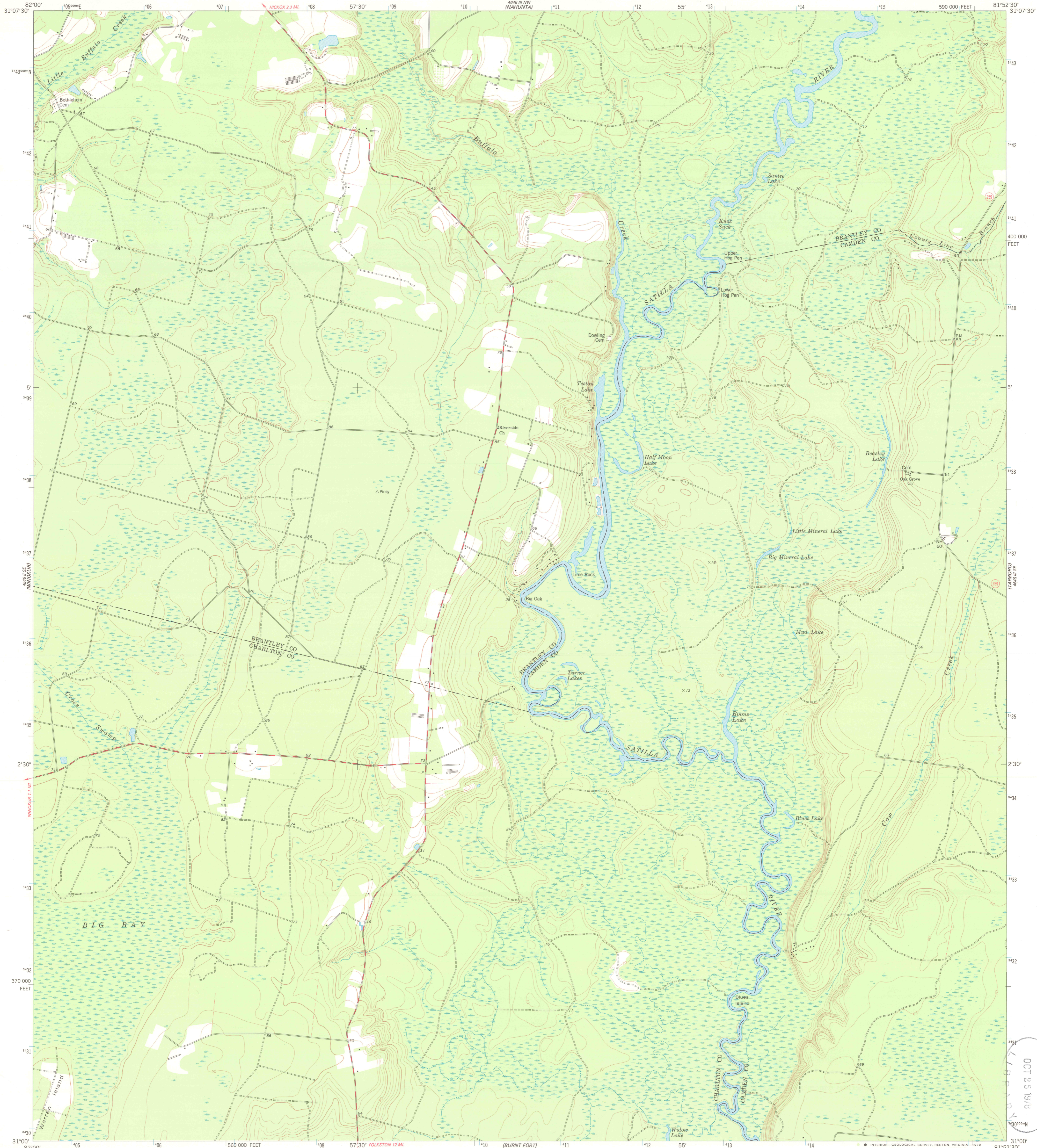
4646 III SW (WINDY HILL)

UNITED STATES  
DEPARTMENT OF THE INTERIOR  
GEOLOGICAL SURVEY

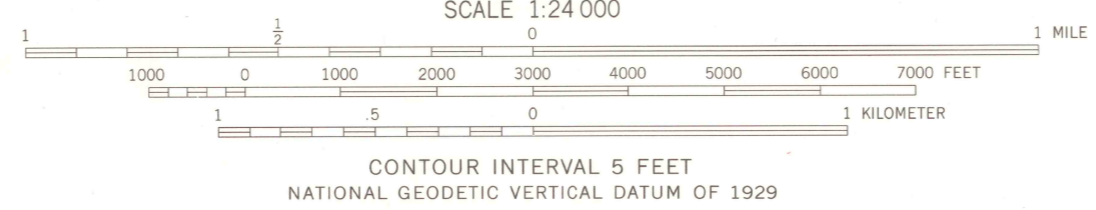
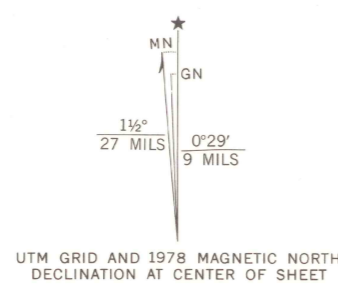
STATE OF GEORGIA  
DEPARTMENT OF NATURAL RESOURCES  
GEOLOGIC AND WATER RESOURCES DIVISION

BOONS LAKE QUADRANGLE  
GEORGIA  
7.5 MINUTE SERIES (TOPOGRAPHIC)  
SW/4 NAHUNTA 15' QUADRANGLE

4646 III SW (WINDY HILL)



Mapped, edited, and published by the Geological Survey  
Control by USGS and NOS/NOAA  
Topography by photogrammetric methods from aerial photographs taken 1974. Field checked 1975. Map edited 1978  
Projection and 10,000-foot grid ticks: Georgia coordinate system, east zone (transverse Mercator)  
1000-meter Universal Transverse Mercator grid ticks, zone 17, shown in blue. 1927 North American datum  
Fine red dashed lines indicate selected fence and field lines where generally visible on aerial photographs. This information is unchecked



ROAD CLASSIFICATION

Primary highway, hard surface	Light-duty road, hard or improved surface
Secondary highway, hard surface	Unimproved road
Interstate Route	U. S. Route
	State Route

THIS MAP COMPLIES WITH NATIONAL MAP ACCURACY STANDARDS FOR SALE BY U. S. GEOLOGICAL SURVEY, RESTON, VIRGINIA 22092 A FOLDER DESCRIBING TOPOGRAPHIC MAPS AND SYMBOLS IS AVAILABLE ON REQUEST



BOONS LAKE, GA.  
SW/4 NAHUNTA 15' QUADRANGLE  
N3100-W8152.5/7.5  
1978  
AMS 4646 III SW—SERIES V845

LIBRARY  
OCT 25 1980  
U. S. GEOLOGICAL SURVEY  
RESTON, VIRGINIA