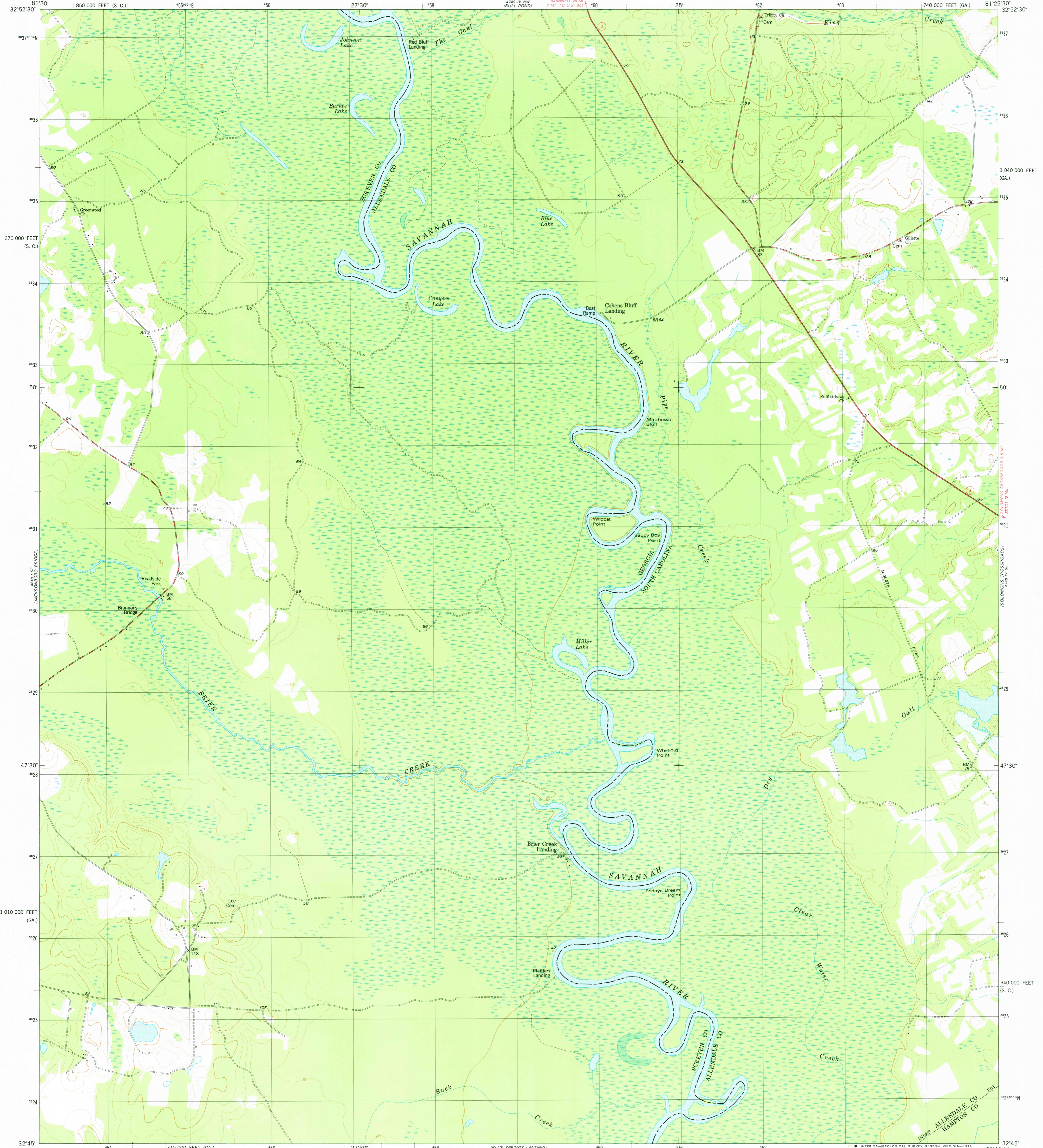
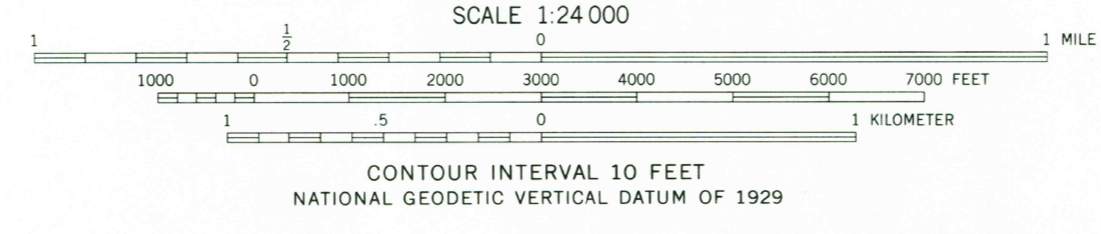
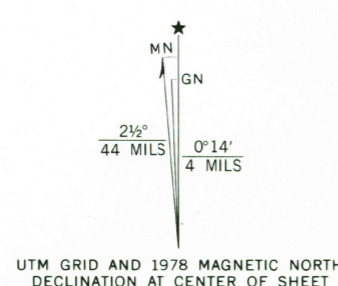


UNITED STATES
DEPARTMENT OF THE INTERIOR
GEOLOGICAL SURVEY

BRIER CREEK LANDING QUADRANGLE
GEORGIA—SOUTH CAROLINA
7.5 MINUTE SERIES (TOPOGRAPHIC)
SW/4 PEEPLES 15' QUADRANGLE



Mapped, edited, and published by the Geological Survey
Control by USGS, NOS/NOAA, and South Carolina Geodetic Survey
Topography by photogrammetric methods from aerial photographs taken 1972. Field checked 1976. Map edited 1978
Projection: Georgia coordinate system, east zone (transverse Mercator) 10,000-foot grid ticks based on Georgia coordinate system, east zone, and South Carolina coordinate system, south zone 1000-meter Universal Transverse Mercator grid, zone 17 1927 North American datum



CONTOUR INTERVAL 10 FEET
NATIONAL GEODETIC VERTICAL DATUM OF 1929



ROAD CLASSIFICATION
Primary highway, hard surface
Secondary highway, hard surface
Light-duty road, hard or improved surface
Unimproved road
Interstate Route
U. S. Route
State Route

BRIER CREEK LANDING, GA.—S.C.
USGS Historical File Topographic Division
SW/4 PEEPLES 15' QUADRANGLE
N3245-W8122.5/7.5
1978
AMS 4749 IV NW—SERIES Y846

THIS MAP COMPLIES WITH NATIONAL MAP ACCURACY STANDARDS FOR SALE BY U. S. GEOLOGICAL SURVEY, RESTON, VIRGINIA 22092 A FOLDER DESCRIBING TOPOGRAPHIC MAPS AND SYMBOLS IS AVAILABLE ON REQUEST

SEP 18 1978