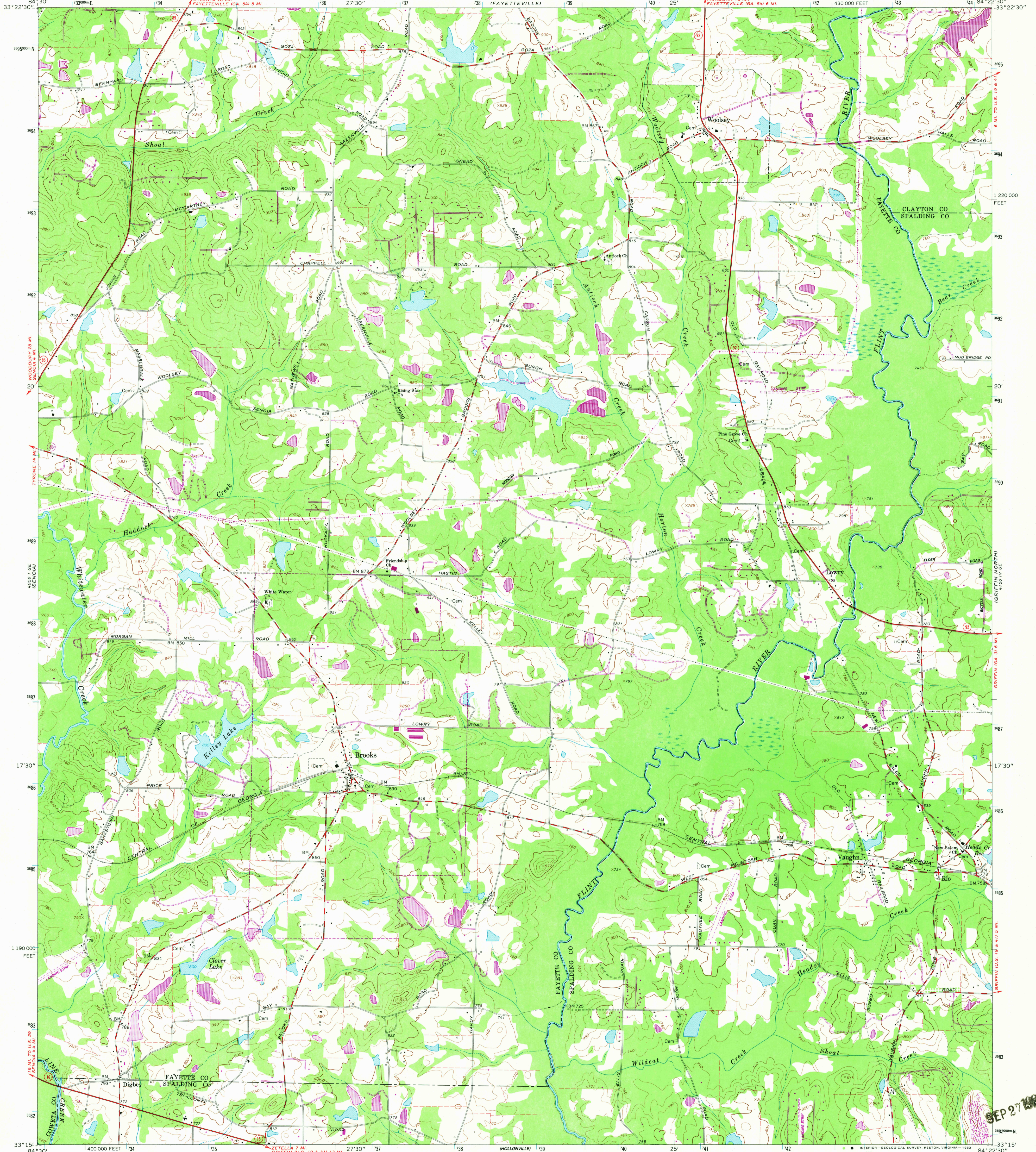


33°22'30" N
84°30' W

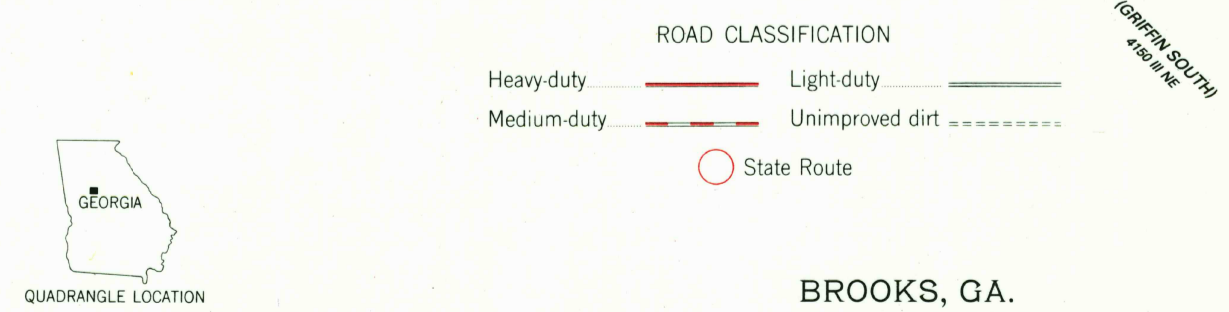
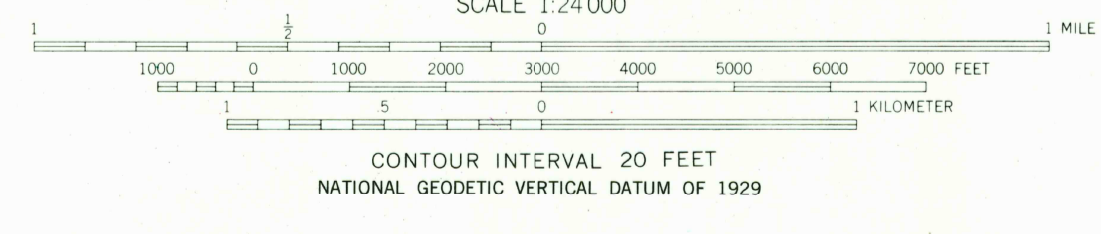
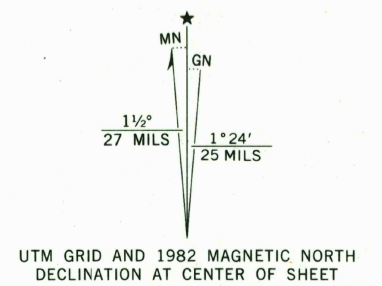
UNITED STATES
DEPARTMENT OF THE INTERIOR
GEOLOGICAL SURVEY

BROOKS QUADRANGLE
GEORGIA
7.5 MINUTE SERIES (TOPOGRAPHIC)

33°22'30" N
84°22'30" W



Maped, edited, and published by the Geological Survey
Control by USGS, NOS/NOAA, and Georgia Geodetic Survey
Topography by photogrammetric methods from aerial photographs
taken 1962. Field checked 1965
Polyconic projection. 10,000-foot grid ticks based on Georgia coordinate
system, west zone. 1000-meter Universal Transverse Mercator grid
ticks, zone 16, shown in blue. 1927 North American Datum
To place on the predicted North American Datum 1983 move
the projection lines 11 meters south and 8 meters west as
shown by dashed corner ticks
Fine red dashed lines indicate selected fence and field lines where
generally visible on aerial photographs. This information is unchecked
Revisions shown in purple and woodland compiled from aerial
photographs taken 1981 and other sources. This information
not field checked. Map edited 1982



THIS MAP COMPLIES WITH NATIONAL MAP ACCURACY STANDARDS
FOR SALE BY U. S. GEOLOGICAL SURVEY, RESTON, VIRGINIA 22092
A FOLDER DESCRIBING TOPOGRAPHIC MAPS AND SYMBOLS IS AVAILABLE ON REQUEST

BROOKS, GA.
N3315-W8422.5/7.5
1965
PHOTOREVISED 1982
DMA 4150 IV SW-SERIES V845

SEP 27 1982