

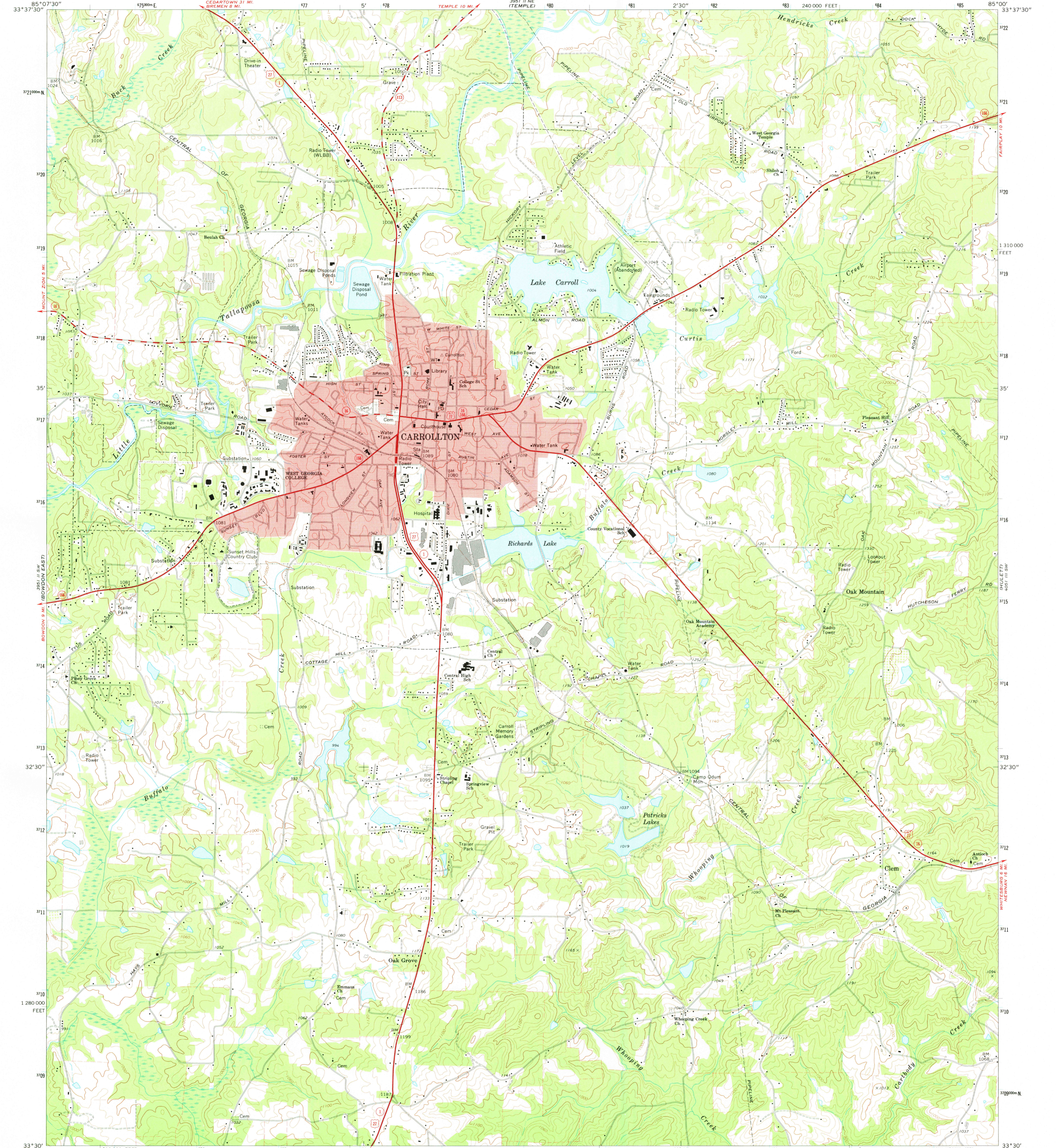
385 II NW
BREMEN
33° 37' 30"
3721000 N
3720
3719
3718
3717
3716
3715
3714
3713
3712
3711
3710
3709
33° 30'
85° 07' 30"

UNITED STATES
DEPARTMENT OF THE INTERIOR
GEOLOGICAL SURVEY

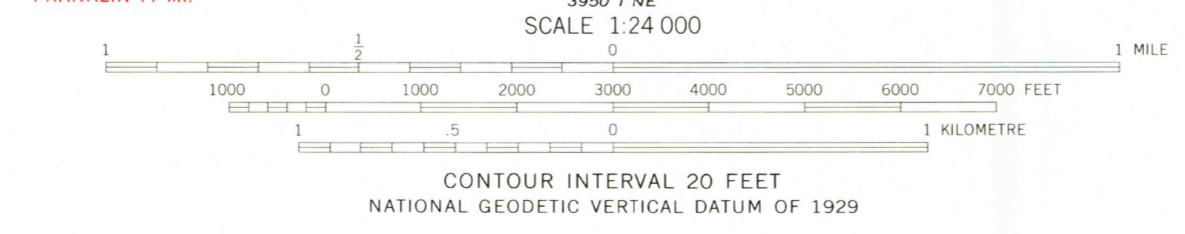
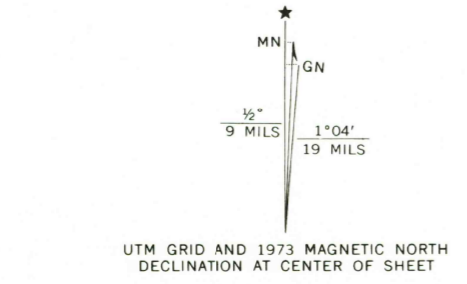
STATE OF GEORGIA
DEPARTMENT OF NATURAL RESOURCES
EARTH AND WATER DIVISION

CARROLLTON QUADRANGLE
GEORGIA-CARROLL CO.
7.5 MINUTE SERIES (TOPOGRAPHIC)
SE/4 CARROLLTON 15' QUADRANGLE

33° 37' 30"
3722
3721
3720
1 310 000
FEET
3719
3718
3717
3716
3715
3714
3713
3712
3711
3710
3709
33° 30'
85° 07' 30"



Mapped, edited, and published by the Geological Survey
Control by USGS, NOS/NOAA, and Georgia Geodetic Survey
Topography by photogrammetric methods from aerial photographs taken 1972. Field checked 1973
Projection and 10,000-foot grid ticks: Georgia coordinate system, west zone (transverse Mercator)
1000-metre Universal Transverse Mercator grid ticks, zone 16, shown in blue. 1927 North American datum
Fine red dashed lines indicate selected fence and field lines where generally visible on aerial photographs. This information is un-checked
Red tint indicates area in which only landmark buildings are shown



ROAD CLASSIFICATION

Primary highway, hard surface	Light-duty road, hard or improved surface
Secondary highway, hard surface	Unimproved road
Interstate Route	U. S. Route
	State Route

THIS MAP COMPLIES WITH NATIONAL MAP ACCURACY STANDARDS
FOR SALE BY U. S. GEOLOGICAL SURVEY, RESTON, VIRGINIA 22092
A FOLDER DESCRIBING TOPOGRAPHIC MAPS AND SYMBOLS IS AVAILABLE ON REQUEST

USGS
Historical File
Topographic Division

CARROLLTON, GA.
SE/4 CARROLLTON 15' QUADRANGLE
N3330-W8500/7.5
1973
AMS 3951 II SE-SERIES V845