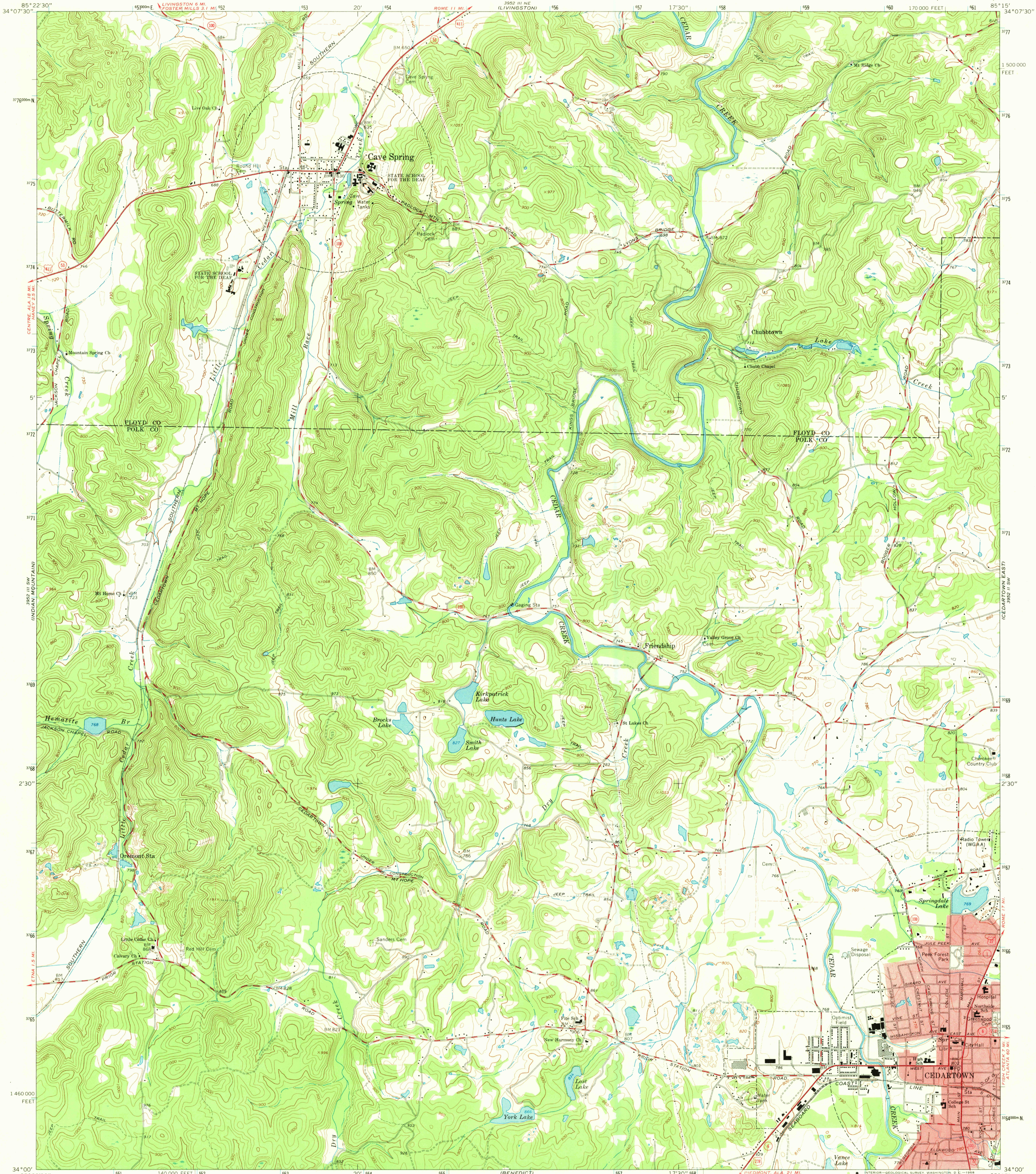


UNITED STATES
DEPARTMENT OF THE INTERIOR
GEOLOGICAL SURVEY

CEDARTOWN WEST QUADRANGLE
GEORGIA
7.5 MINUTE SERIES (TOPOGRAPHIC)



Mapped, edited, and published by the Geological Survey

Control by USGS, USC&GS, US Soil Conservation Service, and Georgia Geodetic Survey

Topography by photogrammetric methods from aerial photographs taken 1964. Field checked 1967

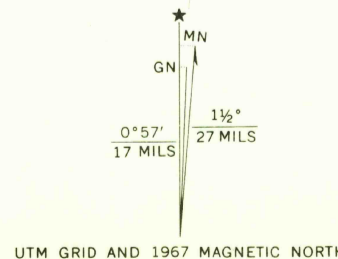
Polyconic projection. 1927 North American datum

10,000-foot grid based on Georgia coordinate system, west zone

1000-meter Universal Transverse Mercator grid ticks, zone 16, shown in blue

Fine red dashed lines indicate selected fence and field lines where generally visible on aerial photographs. This information is unchecked

Red tint indicates area in which only landmark buildings are shown



SCALE 1:24,000

1 000 0 1000 2000 3000 4000 5000 6000 7000 FEET

1 5 10 15 20 25 30 35 40 45 50 KILOMETER

CONTOUR INTERVAL 20 FEET

DOTTED LINES REPRESENT 10-FOOT CONTOURS

DATUM IS MEAN SEA LEVEL

THIS MAP COMPLIES WITH NATIONAL MAP ACCURACY STANDARDS

FOR SALE BY U. S. GEOLOGICAL SURVEY, WASHINGTON, D. C. 20242

A FOLDER DESCRIBING TOPOGRAPHIC MAPS AND SYMBOLS IS AVAILABLE ON REQUEST

USGS
Historical File
Topographic Division

U.S.G.S.

FILE COPY

TOPOGRAPHIC DIVISION

QUADRANGLE LOCATION

GEORGIA

QUADRANGLE LOCATION

ROAD CLASSIFICATION

Heavy-duty Light-duty

Medium-duty Unimproved dirt

U. S. Route State Route

U. S. Route State Route

U. S. Route State Route

U. S. Route State Route

U. S. Route State Route

U. S. Route State Route

CEDARTOWN WEST, GA.

N3400-W8515/7.5

1967

AMS 3952 III SE-SERIES V845

3300

JUN 2 1969