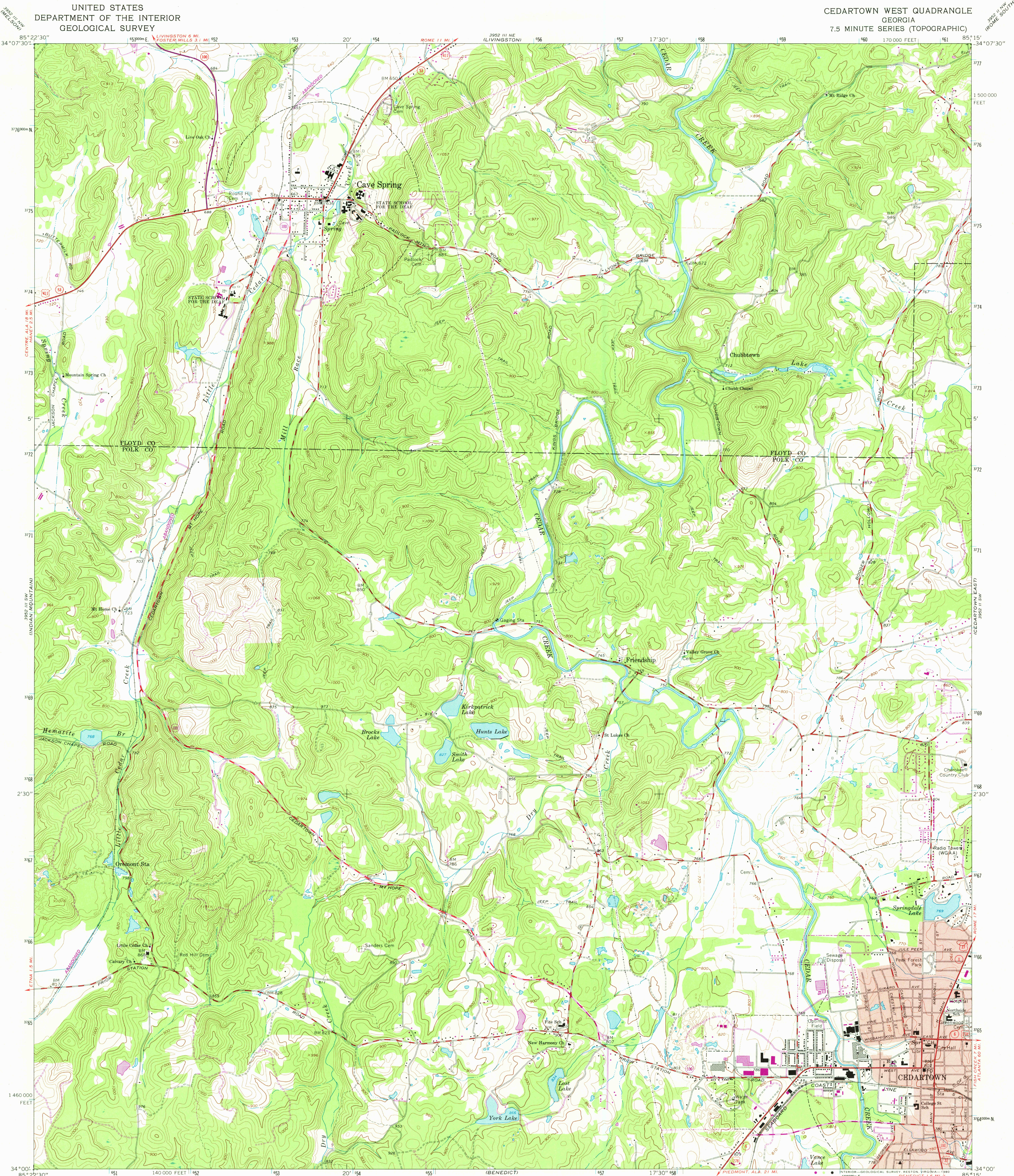


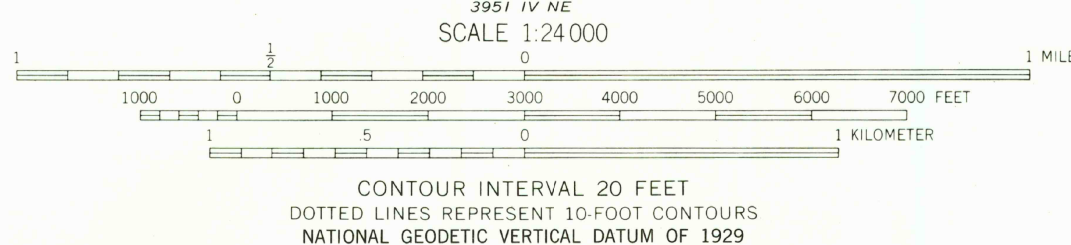
UNITED STATES  
DEPARTMENT OF THE INTERIOR  
GEOLOGICAL SURVEY

CEDARTOWN WEST QUADRANGLE  
GEORGIA  
7.5 MINUTE SERIES (TOPOGRAPHIC)



Mapped, edited, and published by the Geological Survey  
Control by USGS, USC&GS, US Soil Conservation Service,  
and Georgia Geodetic Survey  
Topography by photogrammetric methods from aerial  
photographs taken 1964. Field checked 1967  
Polyconic projection  
10,000-foot grid based on Georgia coordinate system, west zone  
100-meter Universal Transverse Mercator grid ticks,  
zone 16, shown in blue. 1927 North American datum  
To place on the predicted North American Datum 1983  
move the projection lines 9 meters south and  
5 meters west as shown by dashed corner ticks  
Fine red dashed lines indicate selected fence and field lines where  
generally visible on aerial photographs. This information is unchecked  
Red tint indicates area in which only landmark buildings are shown

Revisions shown in purple and woodland compiled from  
aerial photographs taken 1976 and other source data  
This information not field checked. Map edited 1980



ROAD CLASSIFICATION  
Heavy-duty ——— Light-duty ———  
Medium-duty ——— Unimproved dirt ———  
U.S. Route ——— State Route ———

USGS  
Historical File  
Topographic Division

CEDARTOWN WEST, GA.  
N3400—W8515/7.5  
1967  
PHOTOREVISED 1980  
DMA 3952 III SE—SERIES V845

SEP 30 1980

2350