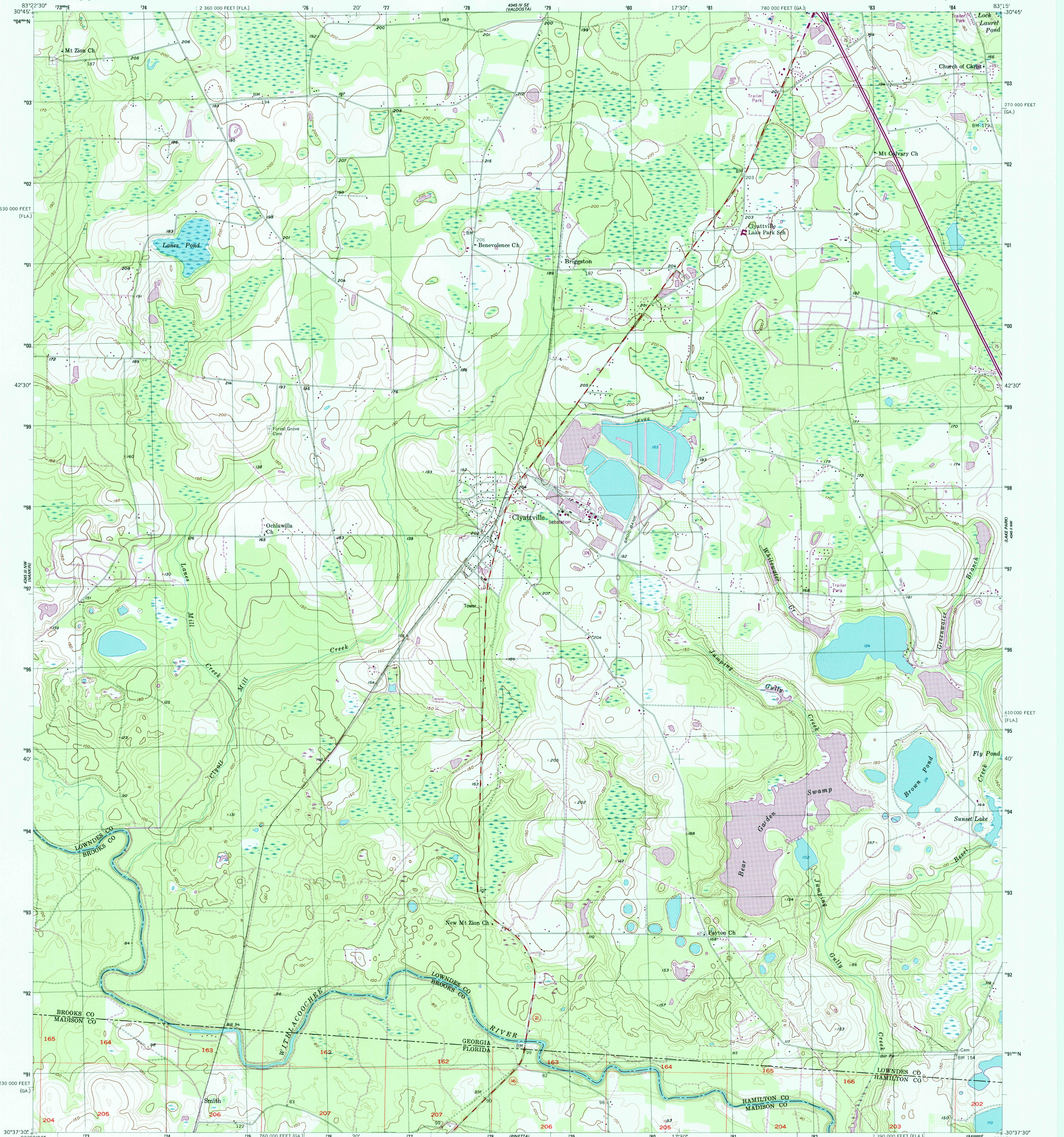


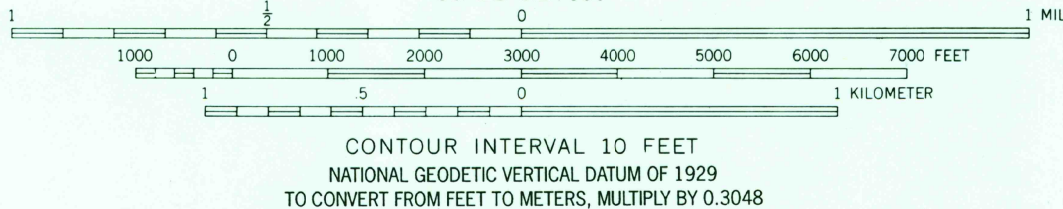
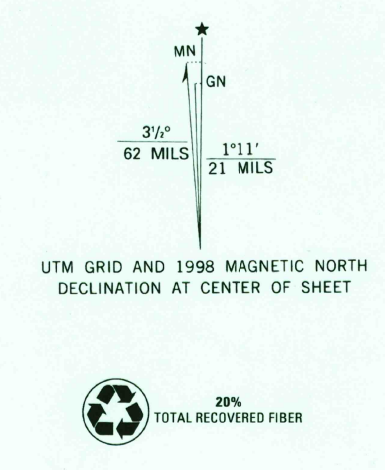


U.S. DEPARTMENT OF THE INTERIOR
U.S. GEOLOGICAL SURVEY

CLYATTVILLE QUADRANGLE
GEORGIA-FLORIDA
7.5 MINUTE SERIES (TOPOGRAPHIC)



Produced by the United States Geological Survey
Topography compiled 1952 and 1954. Planimetry derived from imagery taken 1988. Photoinspected using imagery dated 1994; no major culture or drainage changes observed. Survey control current as of 1956 boundaries verified 1998
North American Datum of 1927 (NAD 27)
Projection: Georgia coordinate system, west zone (Lambert conformal conic)
10 000-foot ticks: Georgia coordinate system, west zone
1000-meter Universal Transverse Mercator grid, zone 17
North American Datum of 1983 (NAD 83) is shown by dashed corner ticks. The values of the shift between NAD 27 and NAD 83 for 7.5-minute intersections are obtainable from National Geodetic Survey NADCON software
Information shown in purple may not meet USGS content standards and may conflict with previously mapped contours



ROAD CLASSIFICATION

Primary highway, all weather, hard surface	Light-duty road, all weather, improved surface
Secondary highway, all weather, hard surface	Unimproved road, fair or dry weather

Interstate Route State Route

THIS MAP COMPLIES WITH NATIONAL MAP ACCURACY STANDARDS
FOR SALE BY U.S. GEOLOGICAL SURVEY, P.O. BOX 25286, DENVER, COLORADO 80225
A FOLDER DESCRIBING TOPOGRAPHIC MAPS AND SYMBOLS IS AVAILABLE ON REQUEST



RECEIVED
AUG 31 2001

CLYATTVILLE, GA. - FLA.

USGS NW1
HISTORICAL MAP ARCHIVES

1994
NIMA 4345 III NE - SERIES V845

