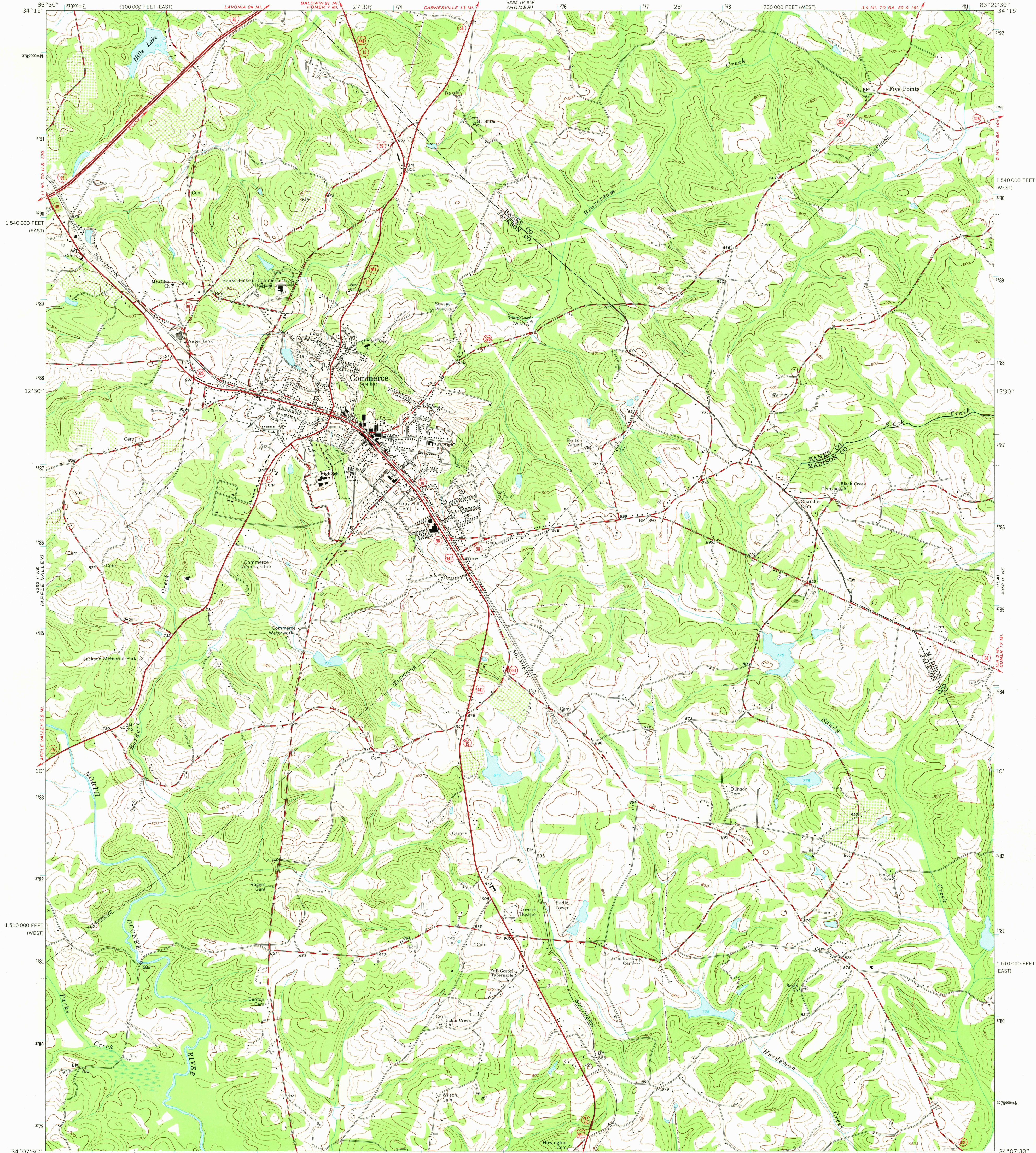
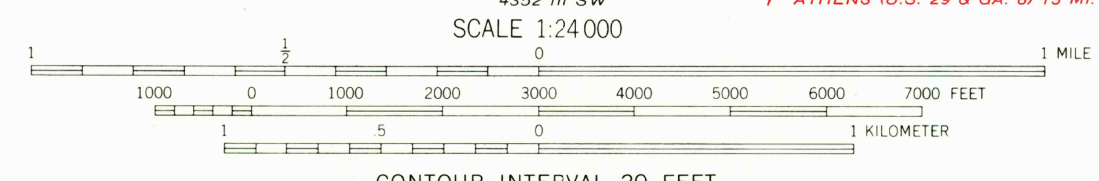
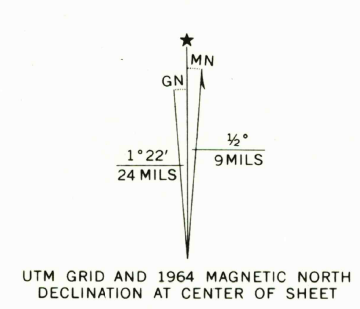


UNITED STATES
DEPARTMENT OF THE INTERIOR
GEOLOGICAL SURVEY

COMMERCE QUADRANGLE
GEORGIA
7.5 MINUTE SERIES (TOPOGRAPHIC)



Mapped, edited, and published by the Geological Survey
Control by USGS, USC&GS, and Georgia Geodetic Survey
Topography by photogrammetric methods from aerial photographs
taken 1956, 1958, and 1963. Field checked 1964
Polyconic projection. 1927 North American datum
10,000-foot grids based on Georgia coordinate system, west and
east zones
1000-meter Universal Transverse Mercator grid ticks,
zone 17, shown in blue
Fine red dashed lines indicate selected fence and field lines where
generally visible on aerial photographs. This information is unchecked
Map photoinspected 1976
No major culture or drainage changes observed



CONTOUR INTERVAL 20 FEET
DATUM IS MEAN SEA LEVEL

THIS MAP COMPLIES WITH NATIONAL MAP ACCURACY STANDARDS
FOR SALE BY U. S. GEOLOGICAL SURVEY, WASHINGTON, D. C. 20242
A FOLDER DESCRIBING TOPOGRAPHIC MAPS AND SYMBOLS IS AVAILABLE ON REQUEST



ROAD CLASSIFICATION

Heavy-duty	Light-duty
Medium-duty	Unimproved dirt
Interstate Route	U. S. Route
	State Route

COMMERCE, GA.
N3407.5-W8322.5/7.5
PHOTOINSPECTED 1976
1964

AMS 4352 III NW-SERIES V845

JAN 1 1988

7900