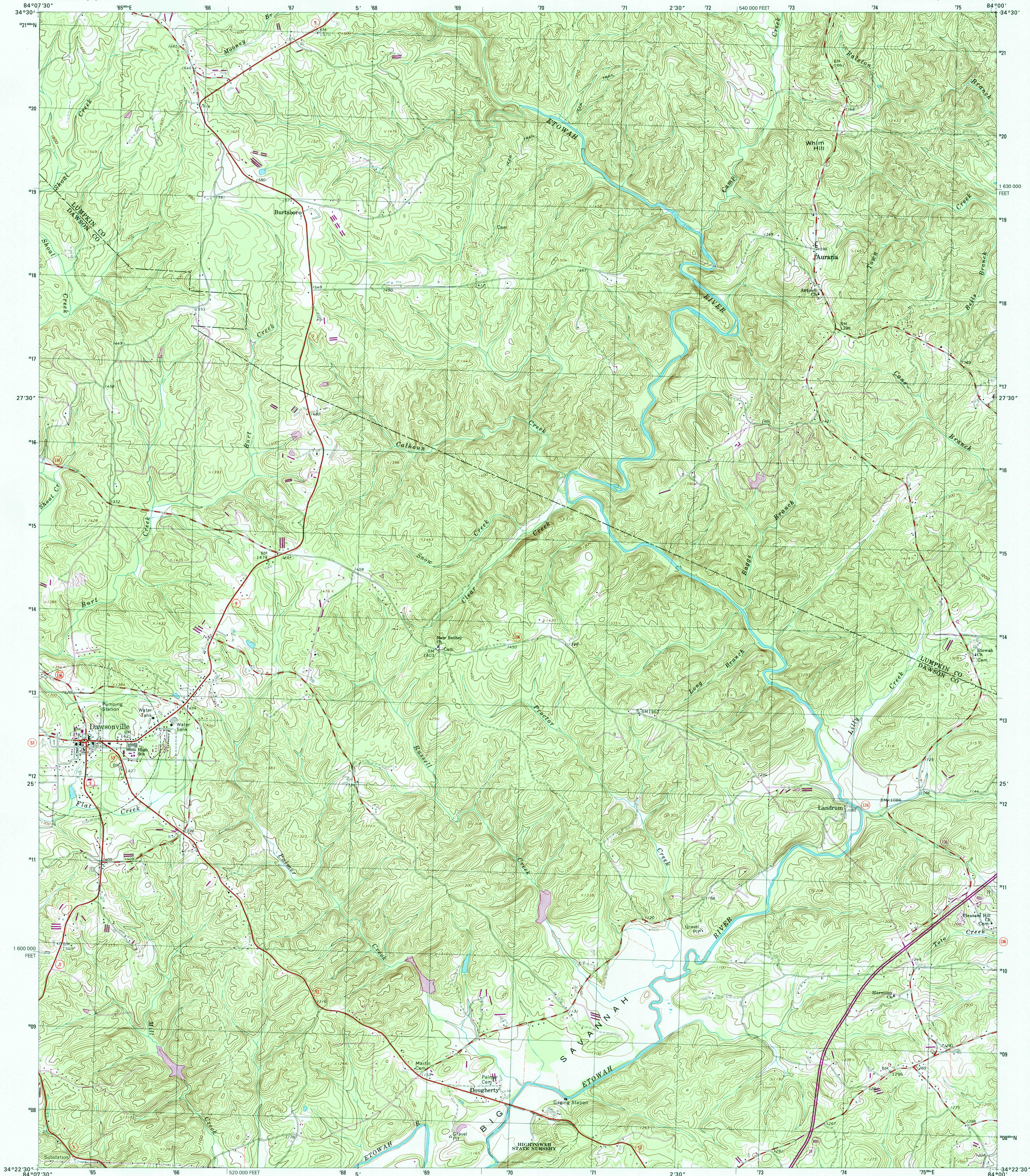




U.S. DEPARTMENT OF THE INTERIOR  
U.S. GEOLOGICAL SURVEY



DAWSONVILLE QUADRANGLE  
GEORGIA  
7.5-MINUTE SERIES (TOPOGRAPHIC)



Produced by the United States Geological Survey

Topography compiled 1962. Planimetry derived from imagery taken 1981 and other sources. Photorevised using imagery dated 1997, no major culture or drainage changes observed. Survey control current as of 1964. Boundaries, other than corporate, verified 1999

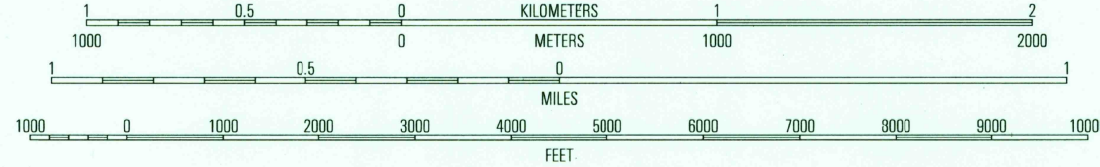
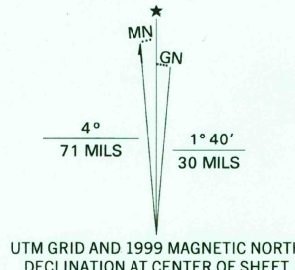
North American Datum of 1927 (NAD 27). Projection and 10 000-foot ticks: Georgia coordinate system, west zone (transverse Mercator)

1000-meter Universal Transverse Mercator grid, zone 16

North American Datum of 1983 (NAD 83) is shown by dashed corner ticks. The values of the shift between NAD 27 and NAD 83 for 7.5-minute intersections are obtainable from National Geodetic Survey NADCON software

There may be private inholdings within the boundaries of the National or State reservations shown on this map

Information shown in purple may not meet USGS content standards and may conflict with previously mapped contours



CONTOUR INTERVAL 20 FEET  
NATIONAL GEODETIC VERTICAL DATUM OF 1929  
TO CONVERT FROM FEET TO METERS, MULTIPLY BY 0.3048

THIS MAP COMPLIES WITH NATIONAL MAP ACCURACY STANDARDS  
FOR SALE BY U.S. GEOLOGICAL SURVEY, P.O. BOX 25286, DENVER, COLORADO 80225  
A FOLDER DESCRIBING TOPOGRAPHIC MAPS AND SYMBOLS IS AVAILABLE ON REQUEST



QUADRANGLE LOCATION

1	2	3	1 Nimbrell
			2 Campbell Mountain
			3 Dahlonega
4	5	6	4 Juno
			5 Murrayville
			6 Marietta
6	7	8	7 Coal Mountain
			8 Chestate

ADJOINING 7.5' QUADRANGLE NAMES

ROAD CLASSIFICATION  
Primary highway hard surface .....  
Secondary highway hard surface .....  
Light-duty road, hard or improved surface .....  
Unimproved road .....  
Interstate Route  
U.S. Route  
State Route

RECEIVED

NOV 30 1999

USGS NM DAWSONVILLE, GA  
HISTORICAL MAP ARCHIVES 1997

NIMA 4152 I NE-SERIES V845

