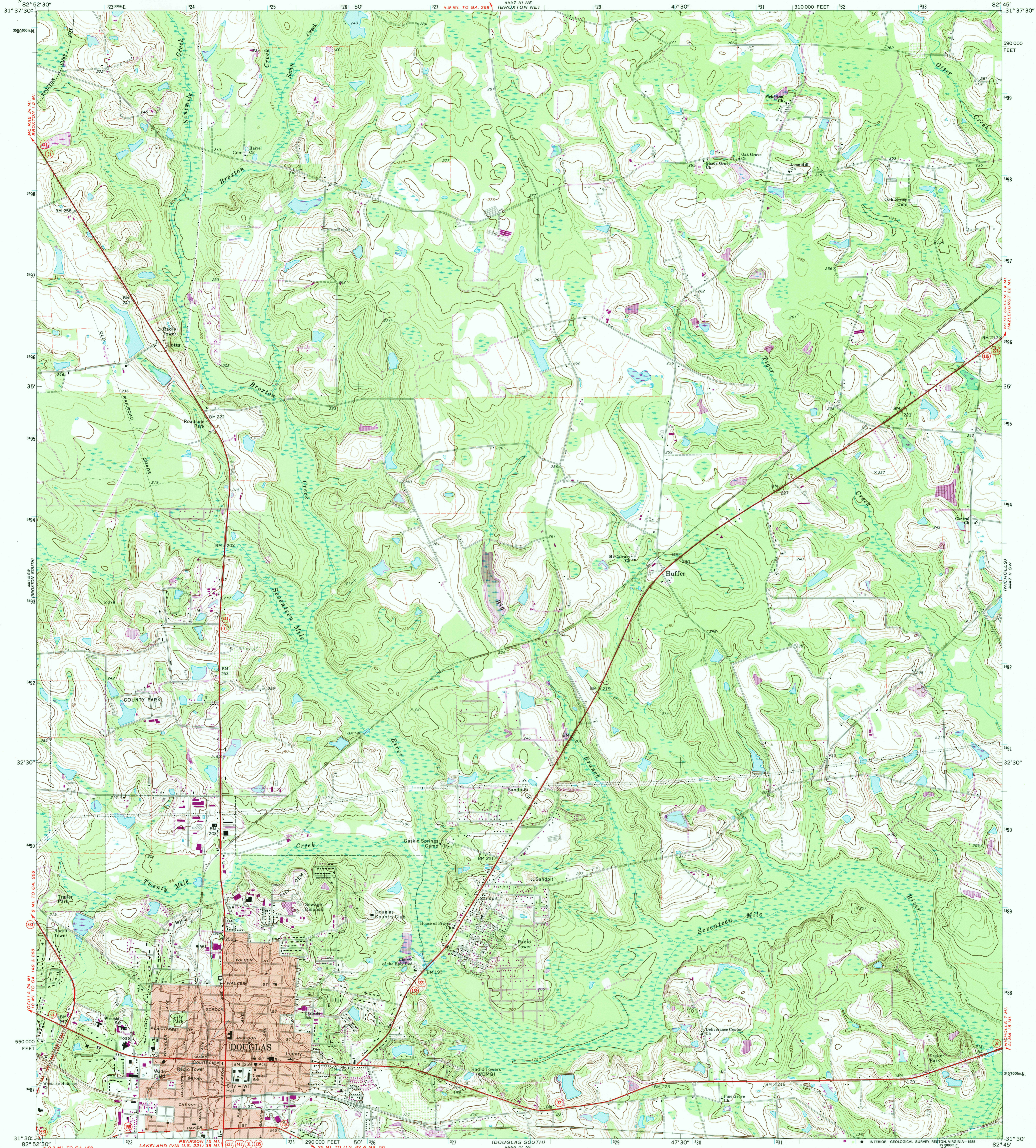


UNITED STATES
DEPARTMENT OF THE INTERIOR
GEOLOGICAL SURVEY

DOUGLAS NORTH QUADRANGLE
GEORGIA—COFFEE CO.
7.5 MINUTE SERIES (TOPOGRAPHIC)



Maped, edited, and published by the Geological Survey

Control by USGS and USC&GS

Topography by photogrammetric methods from aerial photographs taken 1969. Field checked 1971

Polyconic projection. 1927 North American datum 10,000-foot grid based on Georgia coordinate system, east zone 1000-meter Universal Transverse Mercator grid ticks, zone 17, shown in blue

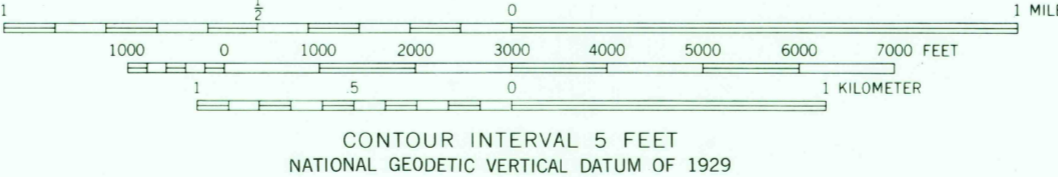
To place on the predicted North American Datum 1983 move the projection lines 17 meters south and 13 meters west as shown by dashed corner ticks

Fine red dashed lines indicate selected fence and field lines where generally visible on aerial photographs. This information is unchecked

Red tint indicates area in which only landmark buildings are shown

Revisions shown in purple and woodland compiled in cooperation with State of Georgia agencies from aerial photographs taken 1983 and other sources. This information not field checked
Map edited 1988

UTM GRID AND 1988 MAGNETIC NORTH DECLINATION AT CENTER OF SHEET



THIS MAP COMPLIES WITH NATIONAL MAP ACCURACY STANDARDS FOR SALE BY U. S. GEOLOGICAL SURVEY
DENVER, COLORADO 80225 OR RESTON, VIRGINIA 22092
A FOLDER DESCRIBING TOPOGRAPHIC MAPS AND SYMBOLS IS AVAILABLE ON REQUEST

ROAD CLASSIFICATION	
Primary highway, hard surface	Light-duty road, hard or improved surface
Secondary highway, hard surface	Unimproved road
Interstate Route	U. S. Route
	State Route



USGS NMD HISTORICAL MAP
MAR 23 1989
REC'D FILE COPY

DOUGLAS NORTH, GA.
31082-E7-TF-024

1971
PHOTOREVISED 1988
DMA 4447 III SE—SERIES V845