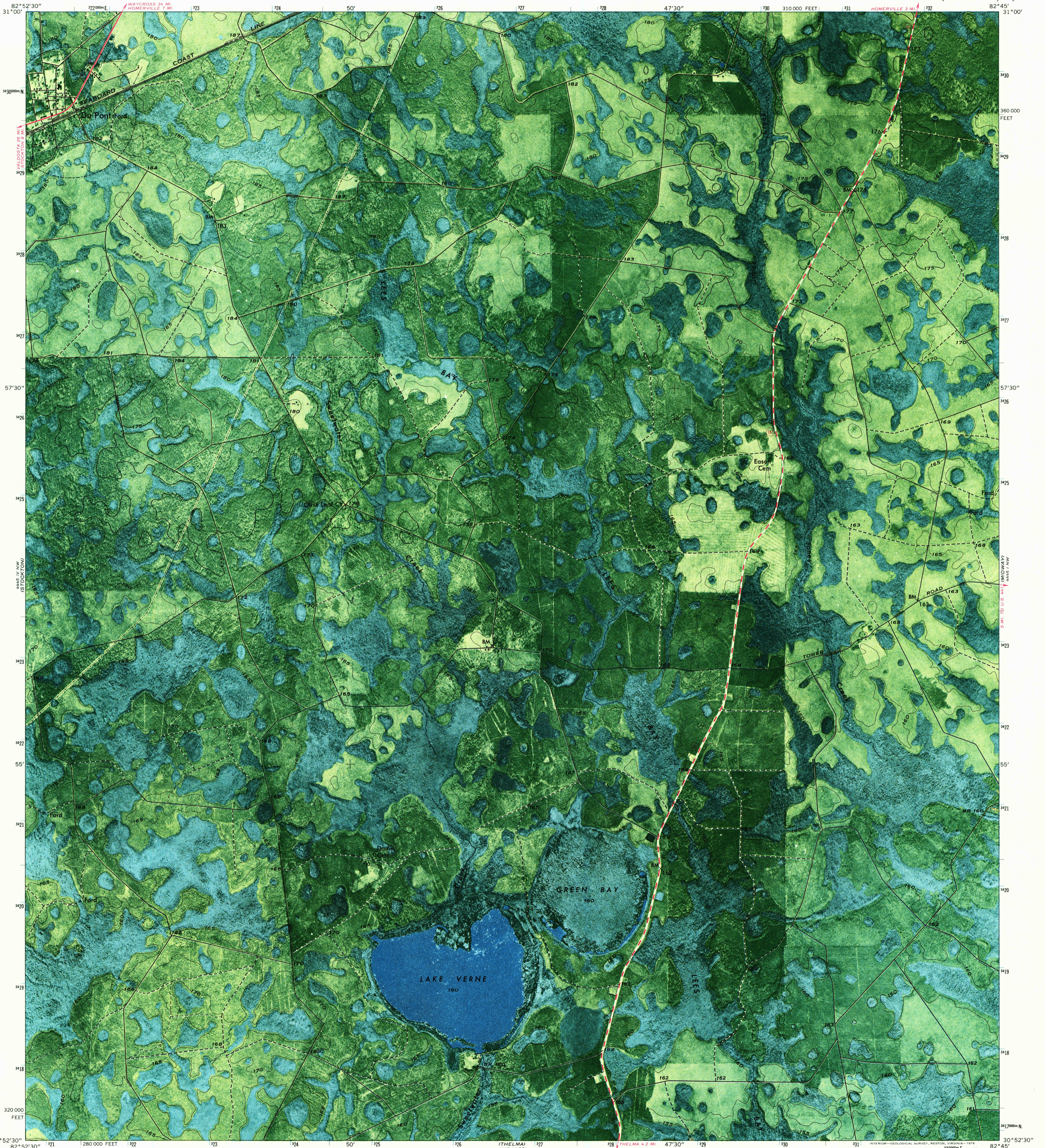


4445 IV NW
HOMERVILLE
EAST



82°52'30" 31°00" 3220000 E 323 324 50' 326 327 328 47'30" 330 310000 FEET 331 332 82°45' 31°00"

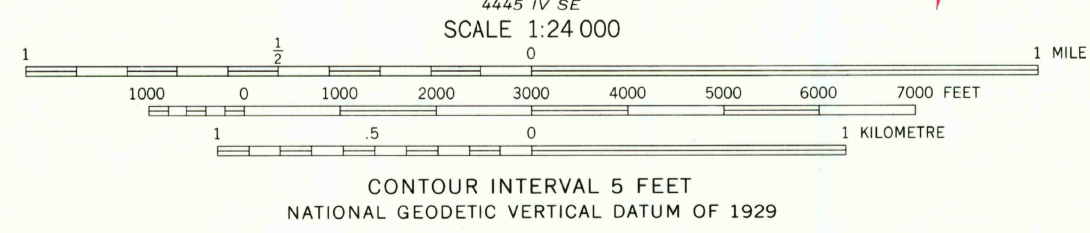
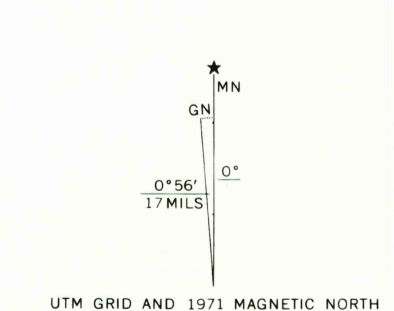
3430000 N 3430 3429 3428 3427 3426 3425 3424 3423 3422 3421 3420 3419 3418 3417 3416 3415 3414 3413 3412 3411 3410 3409 3408 3407 3406 3405 3404 3403 3402 3401 3400 N

320000 FEET 280000 FEET 322 323 324 50' 325 326 327 328 47'30" 329 330 331 3320000 E 3320000 E 82°52'30" 82°45'30"

3430000 FEET 3429 3428 3427 3426 3425 3424 3423 3422 3421 3420 3419 3418 3417 3416 3415 3414 3413 3412 3411 3410 3409 3408 3407 3406 3405 3404 3403 3402 3401 3400 N

320000 FEET 280000 FEET 322 323 324 50' 325 326 327 328 47'30" 329 330 331 3320000 E 3320000 E 82°52'30" 82°45'30"

Mapped, edited, and published by the Geological Survey
Control by USGS and NOS/NOAA
Orthophotomap prepared from aerial photographs taken January 1970
Topography by photogrammetric methods. Field checked 1971
Projection and 10,000-foot grid ticks: Georgia coordinate system, east zone (transverse Mercator)
1000 metre Universal Transverse Mercator grid ticks, zone 17, shown in blue. 1927 North American datum



ROAD CLASSIFICATION

Primary highway, hard surface	Light-duty road, hard or improved surface
Secondary highway, hard surface	Unimproved road
Trails	
Interstate Routes	U. S. Route
	State Route

THIS MAP COMPLIES WITH NATIONAL MAP ACCURACY STANDARDS FOR SALE BY U. S. GEOLOGICAL SURVEY, RESTON, VIRGINIA 22092 A FOLDER DESCRIBING TOPOGRAPHIC MAPS AND SYMBOLS IS AVAILABLE ON REQUEST

USGS
Historical File
Topographic Division

DU PONT, GA.
N3052.5—W8245.7.5
1971
AMS 4445 IV NE—SERIES V8450

3560
APR 21 1977