

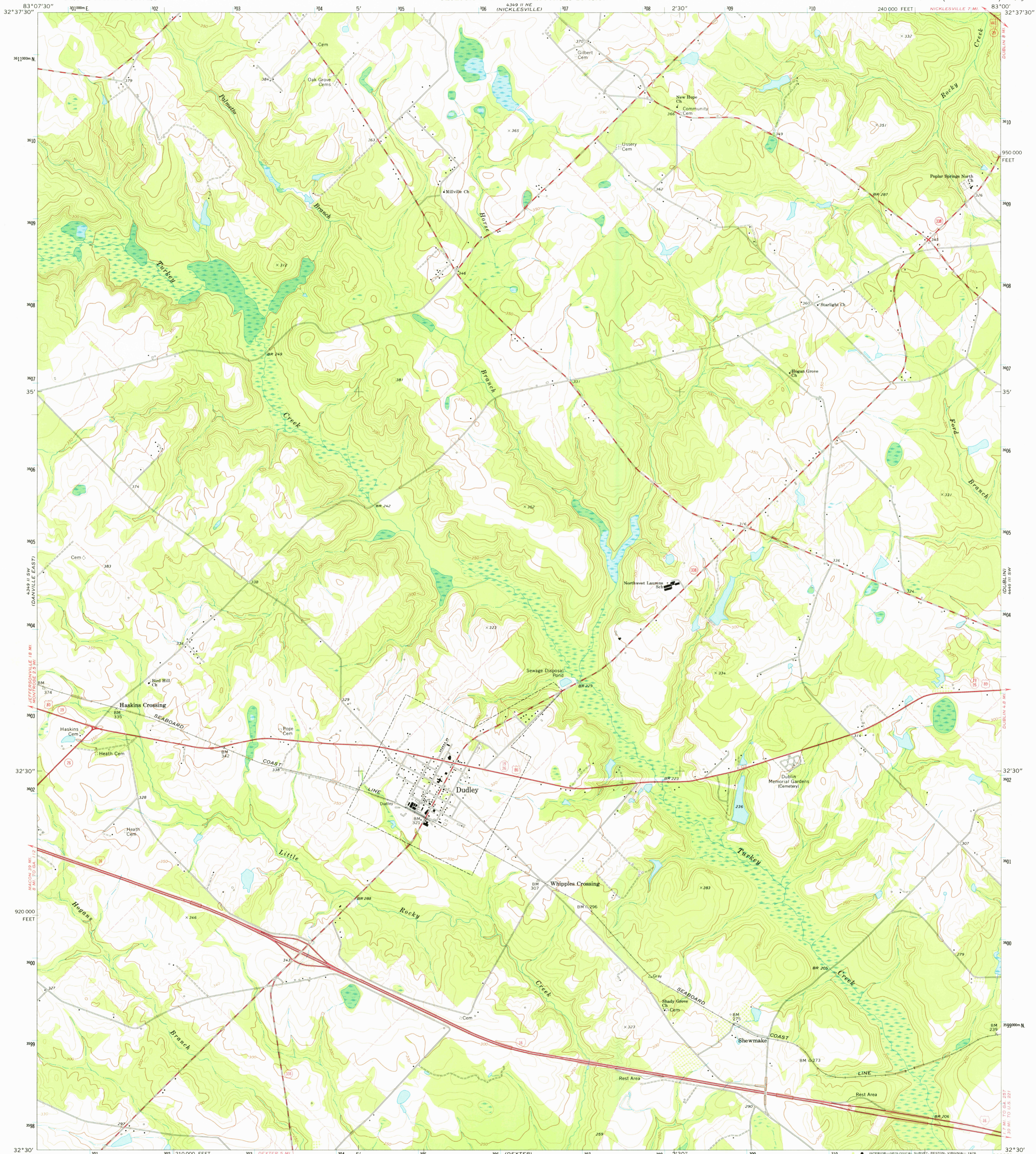
STUFEY LAKE

UNITED STATES  
DEPARTMENT OF THE INTERIOR  
GEOLOGICAL SURVEY

STATE OF GEORGIA  
DEPARTMENT OF NATURAL RESOURCES  
GEOLOGIC AND WATER RESOURCES DIVISION

DUDLEY QUADRANGLE  
GEORGIA—LAURENS CO.  
7.5 MINUTE SERIES (TOPOGRAPHIC)

849 11 NW  
100 WELL  
SWAMP



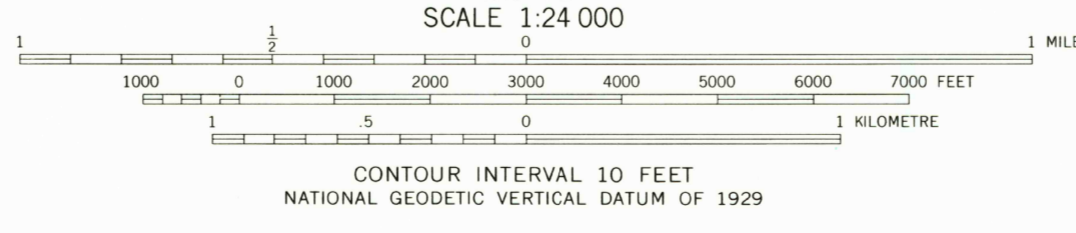
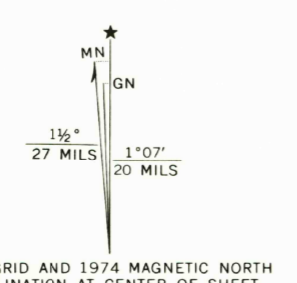
Mapped, edited, and published by the Geological Survey

Control by USGS, and NOS/NOAA  
Topography by photogrammetric methods from aerial photographs taken 1973. Field checked 1974

Projection and 10,000-foot grid ticks: Georgia coordinate system, east zone (transverse Mercator)  
1000-metre Universal Transverse Mercator grid ticks, zone 17, shown in blue. 1927 North American datum

Fine red dashed lines indicate selected fence and field lines where generally visible on aerial photographs. This information is unchecked

CHESTER 2438 1 NW



ROAD CLASSIFICATION	
Primary highway, hard surface	Light-duty road, hard or improved surface
Secondary highway, hard surface	Unimproved road
○ Interstate Route	○ U. S. Route
	○ State Route

THIS MAP COMPLIES WITH NATIONAL MAP ACCURACY STANDARDS FOR SALE BY U. S. GEOLOGICAL SURVEY, RESTON, VIRGINIA 22092 A FOLDER DESCRIBING TOPOGRAPHIC MAPS AND SYMBOLS IS AVAILABLE ON REQUEST

USGS  
Historical File  
Topographic Division

DUDLEY, GA.  
N3230—W8300/7.5  
1974  
AMS 4349 II SE—SERIES V845

DEC 0 2 1976