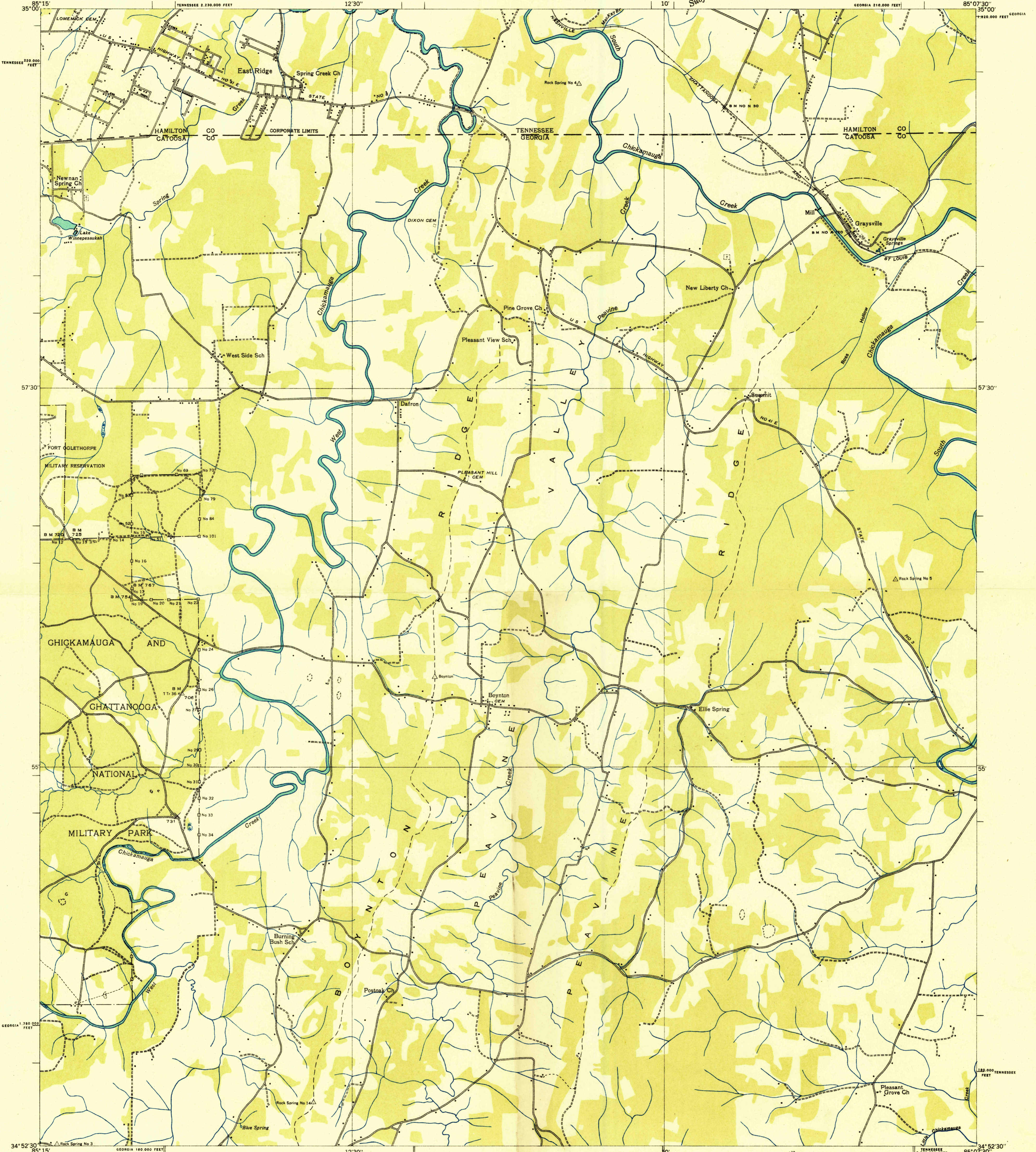
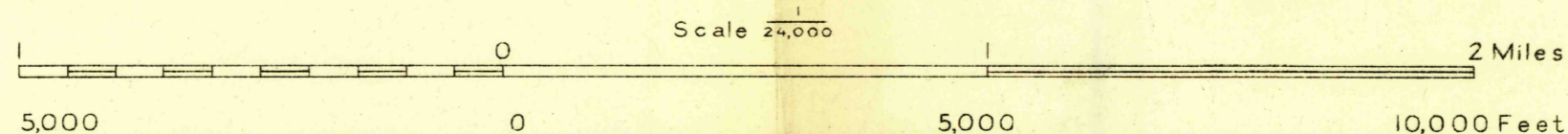


Advance sheet  
Subject to correction



Albert Pike, Division Engineer.  
Compiled by U. S. Geological Survey from aerial photographs  
Control by U. S. Geological Survey and U. S. Coast and Geodetic Survey  
Field examination in 1935



Datum is mean sea level

USGS  
Historical File  
Topographic Division

TRUE NORTH  
MAGNETIC NORTH  
APPROXIMATE MEAN  
DECLINATION, 1935

Polygonic projection. 1927 North American datum  
10,000 foot grid based on Georgia (West) and  
Tennessee rectangular coordinate systems

Ridge line  
Trail  
Sinks

EAST RIDGE, GA.-TENN.  
113-NW