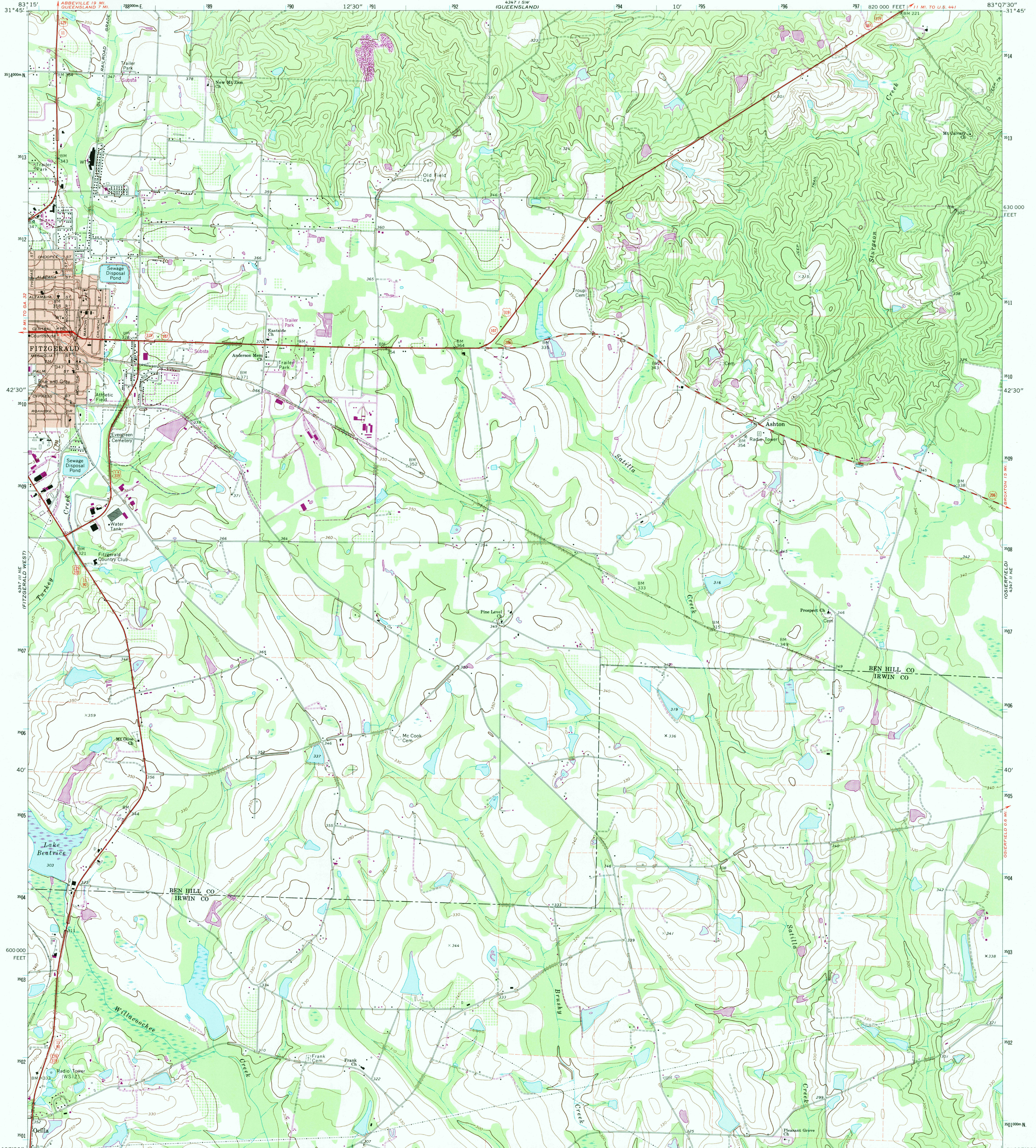


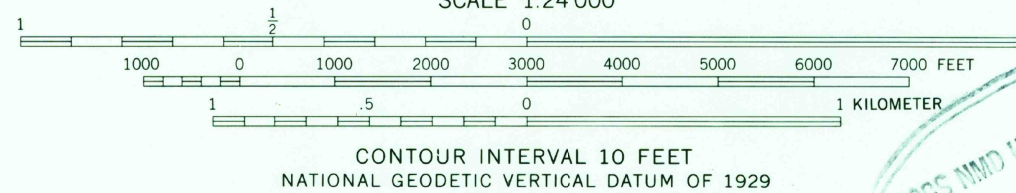
UNITED STATES
DEPARTMENT OF THE INTERIOR
GEOLOGICAL SURVEY

FITZGERALD EAST QUADRANGLE
GEORGIA
7.5 MINUTE SERIES (TOPOGRAPHIC)



Maped, edited, and published by the Geological Survey
Control by USGS, NOS/NOAA, and Georgia Geodetic Survey
Topography by photogrammetric methods from aerial photographs
taken 1971. Field checked 1972
Projection and 10,000-foot grid ticks: Georgia coordinate
system, west zone (transverse Mercator)
1000-meter Universal Transverse Mercator grid ticks,
zone 17, shown in blue. 1927 North American datum
To place on the predicted North American Datum 1983
move the projection lines 16 meters south and
12 meters west as shown by dashed corner ticks
Fine red dashed lines indicate selected fence and field lines where
generally visible on aerial photographs. This information is unchecked
Red tint indicates area in which only landmark buildings are shown

UTM GRID AND 1988 MAGNETIC NORTH
DECLINATION AT CENTER OF SHEET



THIS MAP COMPLIES WITH NATIONAL MAP ACCURACY STANDARDS
FOR SALE BY U. S. GEOLOGICAL SURVEY
DENVER, COLORADO 80225 OR RESTON, VIRGINIA 22092
A FOLDER DESCRIBING TOPOGRAPHIC MAPS AND SYMBOLS IS AVAILABLE ON REQUEST

U.S. GEOLOGICAL SURVEY
MAR 15 1983
REC'D FILE COPY



ROAD CLASSIFICATION
Primary highway, light-duty road, hard or hard surface
Secondary highway, improved surface
hard surface
Unimproved road
Interstate Route U. S. Route State Route
FITZGERALD EAST, GA.
31083-F2-TF-024
1972
PHOTOREVISED 1988
DMA 4347 II NW-SERIES Y845