

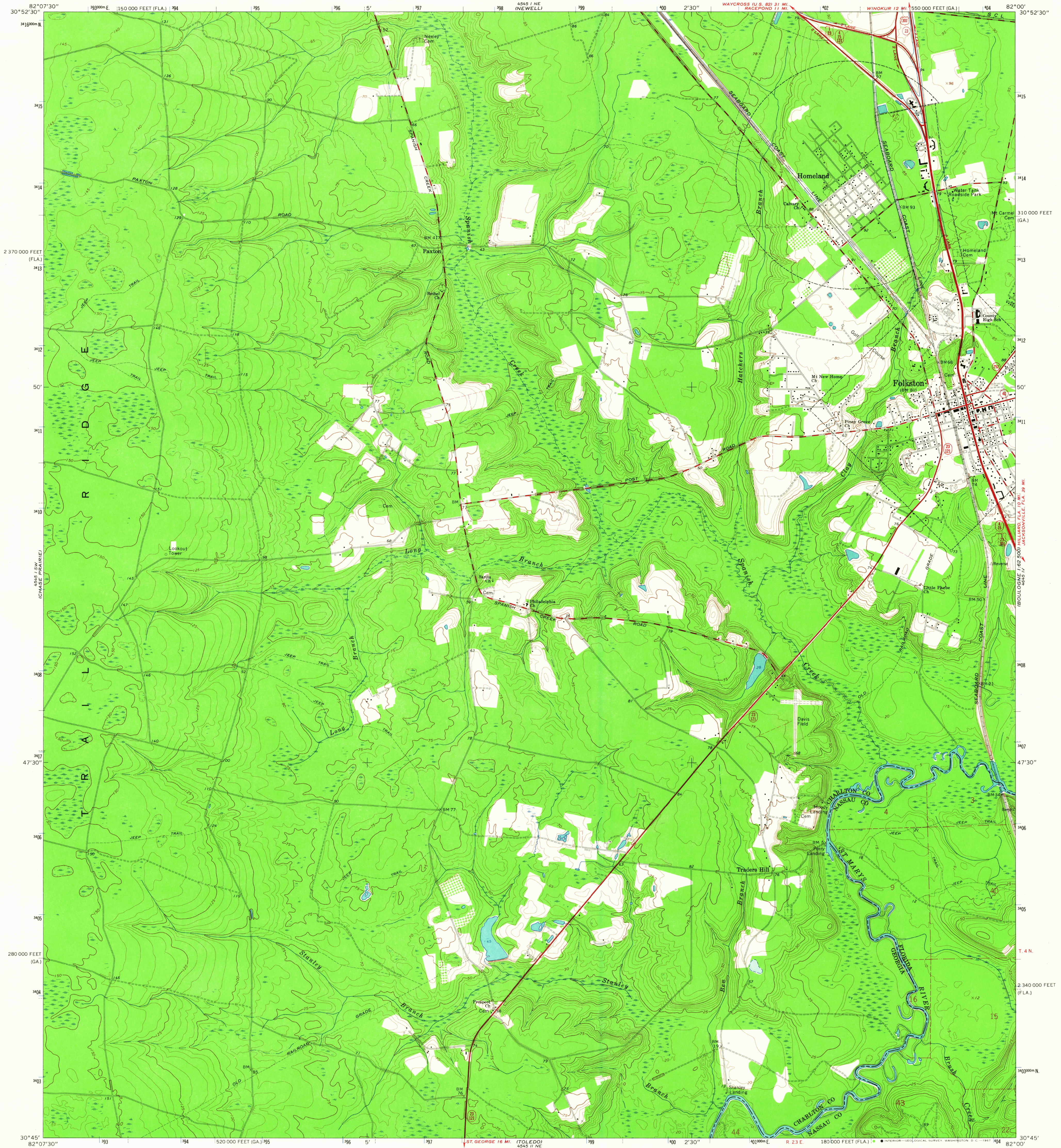
4545 / NW
GOULDS LAKES

UNITED STATES
DEPARTMENT OF THE INTERIOR
GEOLOGICAL SURVEY

STATE OF GEORGIA
DEPARTMENT OF MINES, MINING, AND GEOLOGY
DIVISION OF CONSERVATION

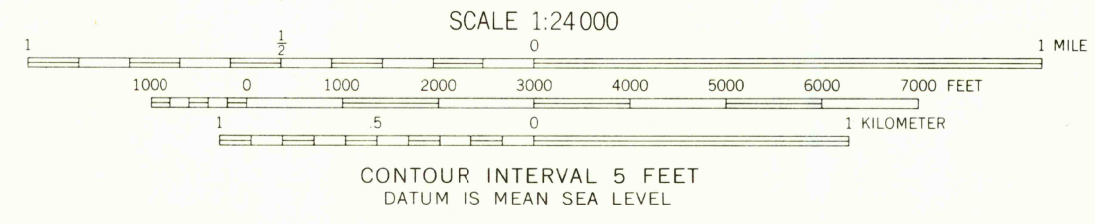
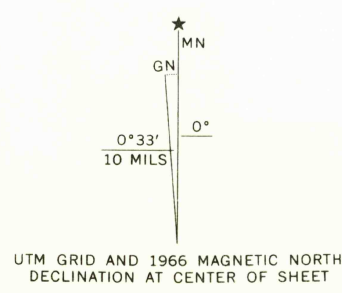
FOLKSTON QUADRANGLE
GEORGIA-FLORIDA
7.5 MINUTE SERIES (TOPOGRAPHIC)

4545 / E
BOULDORE 162 500



4545 / SW
CHASSE PRAIRIE

Mapped, edited, and published by the Geological Survey
Control by USGS and USC&GS
Topography by photogrammetric methods from aerial photographs
taken 1963. Field checked 1966
Polyconic projection. 1927 North American datum
10,000-foot grids based on Georgia coordinate system, east zone,
and Florida coordinate system, east zone
1000-meter Universal Transverse Mercator grid ticks,
zone 17, shown in blue
Fine red dashed lines indicate selected fence and field lines where
generally visible on aerial photographs. This information is unchecked



THIS MAP COMPLIES WITH NATIONAL MAP ACCURACY STANDARDS
FOR SALE BY U.S. GEOLOGICAL SURVEY, WASHINGTON, D.C. 20242
A FOLDER DESCRIBING TOPOGRAPHIC MAPS AND SYMBOLS IS AVAILABLE ON REQUEST

USGS
Historical File
Topographic Division



U.S.G.S.
FILE COPY
TOPOGRAPHIC DIVISION

ROAD CLASSIFICATION	
Heavy duty	Light duty
Medium duty	Unimproved dirt
U.S. Route	State Route

FOLKSTON, GA. - FLA.
SE/4 FOLKSTON 15' QUADRANGLE
N3045-W8200/7.5

1966
AMS 4545 I SE-SERIES V845

DEC 8 1967

2595