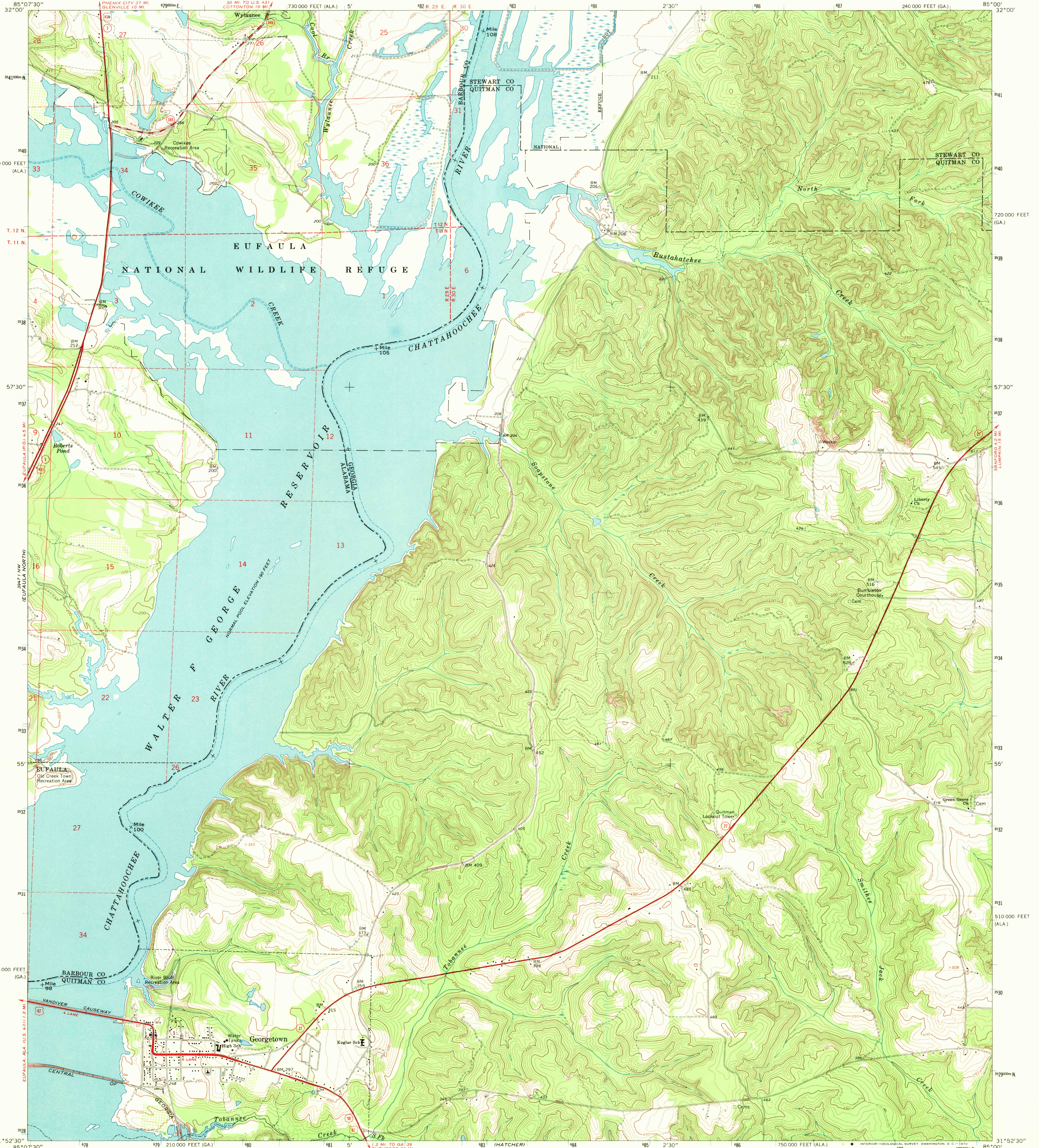
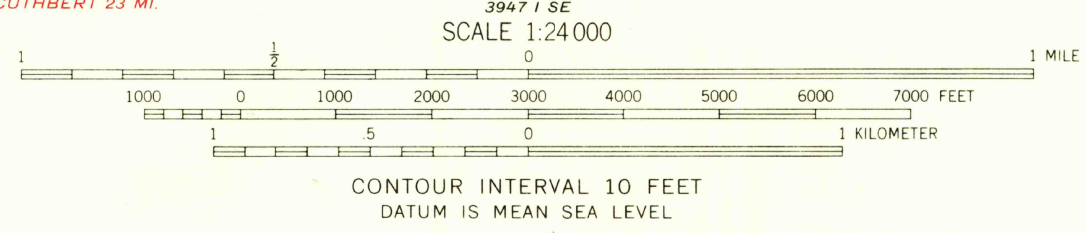
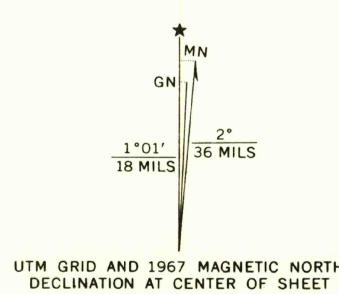


UNITED STATES  
DEPARTMENT OF THE INTERIOR  
GEOLOGICAL SURVEY

GEORGETOWN QUADRANGLE  
GEORGIA-ALABAMA  
7.5 MINUTE SERIES (TOPOGRAPHIC)



Maped, edited, and published by the Geological Survey  
Control by JSGS, USC&GS, USCE, and Georgia Geodetic Survey  
Topography by photogrammetric methods from aerial  
photographs taken 1965. Field checked 1967  
Polyconic projection. 1927 North American datum  
10,000-foot grids based on Georgia coordinate system, west zone,  
and Alabama coordinate system, east zone  
1000-meter Universal Transverse Mercator grid ticks,  
zone 16, shown in blue  
Fine red dashed lines indicate selected fence and field lines where  
generally visible on aerial photographs. This information is unchecked



USGS  
Historical File  
Topographic Division



ROAD CLASSIFICATION  
Primary highway, all weather, hard surface  
Secondary highway, all weather, hard surface  
Unimproved road, fair or dry weather  
Light-duty road, all weather, improved surface  
Unimproved road, fair or dry weather  
S. Route  
State Route

U.S.G.S.  
FILE COPY  
TOPOGRAPHIC DIVISION

GEORGETOWN, GA.-ALA.  
N3152.5-W8500/7.5

THIS MAP COMPLIES WITH NATIONAL MAP ACCURACY STANDARDS  
FOR SALE BY U. S. GEOLOGICAL SURVEY, WASHINGTON, D. C. 20242  
A FOLDER DESCRIBING TOPOGRAPHIC MAPS AND SYMBOLS IS AVAILABLE ON REQUEST

1967  
AMS 3947 1 NE-SERIES V845

DEC 2 2 1970