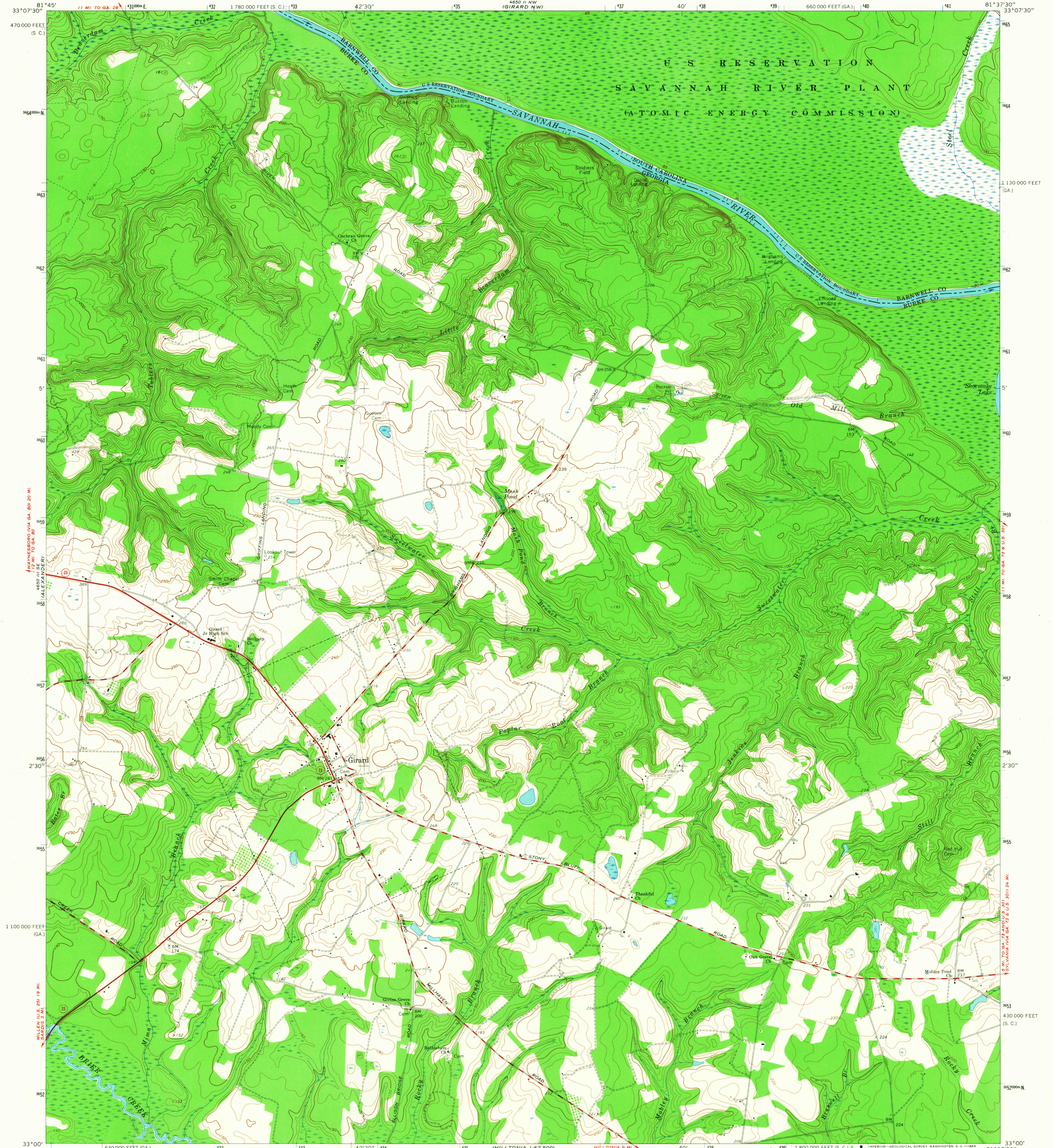


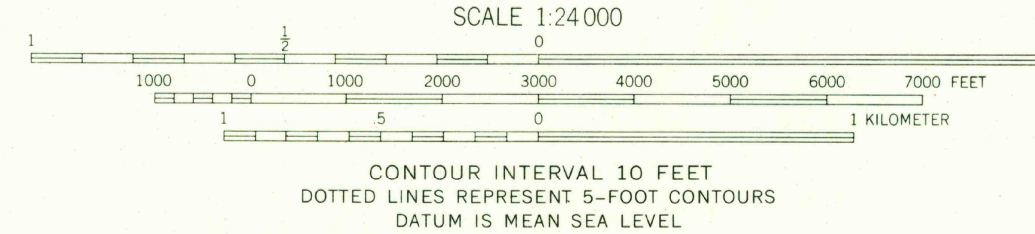
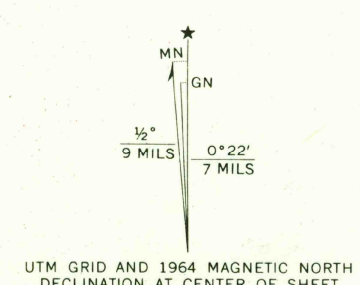
6650 II NW  
GIRARD NW  
1:24,000

UNITED STATES  
DEPARTMENT OF THE INTERIOR  
GEOLOGICAL SURVEY

GIRARD QUADRANGLE  
GEORGIA-SOUTH CAROLINA  
7.5 MINUTE SERIES (TOPOGRAPHIC)



Maped, edited, and published by the Geological Survey in cooperation with the Atomic Energy Commission  
Control by USGS and USC&GS  
Topography in Georgia by photogrammetric methods from aerial photographs taken 1962. Field checked 1964  
Topography in South Carolina from Atomic Energy Commission Savannah River Plant map  
Polyconic projection. 1927 North American datum  
10,000-foot grids based on Georgia coordinate system, east zone and South Carolina coordinate system, south zone  
1000-meter Universal Transverse Mercator grid ticks, zone 17, shown in blue  
Fine red dashed lines indicate selected fence and field lines where generally visible on aerial photographs. This information is unchecked



THIS MAP COMPLIES WITH NATIONAL MAP ACCURACY STANDARDS  
FOR SALE BY U.S. GEOLOGICAL SURVEY, WASHINGTON, D.C. 20242  
A FOLDER DESCRIBING TOPOGRAPHIC MAPS AND SYMBOLS IS AVAILABLE ON REQUEST

USGS  
Historical File  
Topographic Division



ROAD CLASSIFICATION

Heavy-duty	Light-duty
Medium-duty	Unimproved dirt

State Route

U.S.G.S.  
FILE COPY  
TOPOGRAPHIC DIVISION

GIRARD, GA.—S. C.  
N3300—W8137.5/7.5  
1964  
AMS 4650 II SW—SERIES V845

SEP 8 1965  
2425