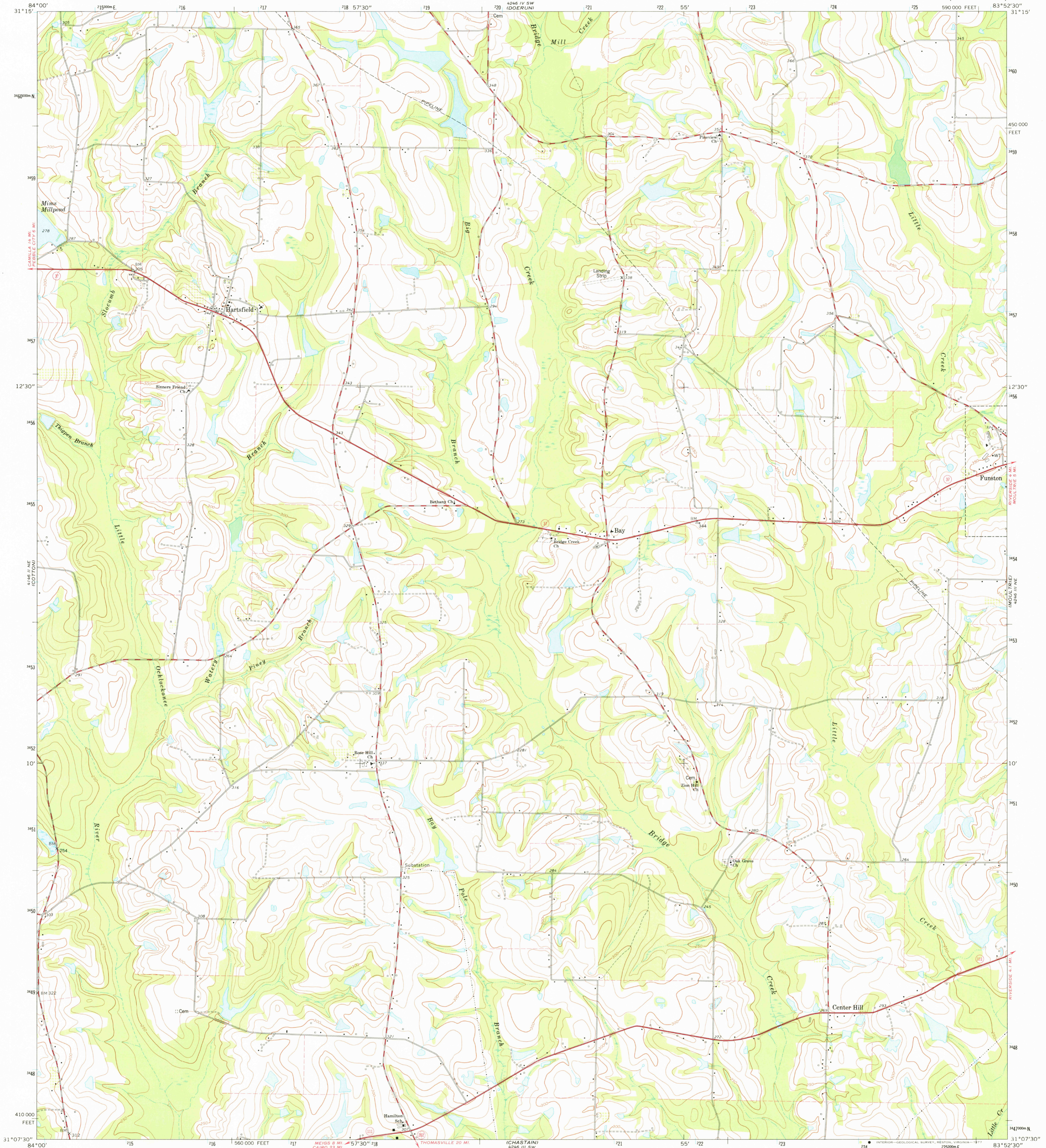


SCALE CITY

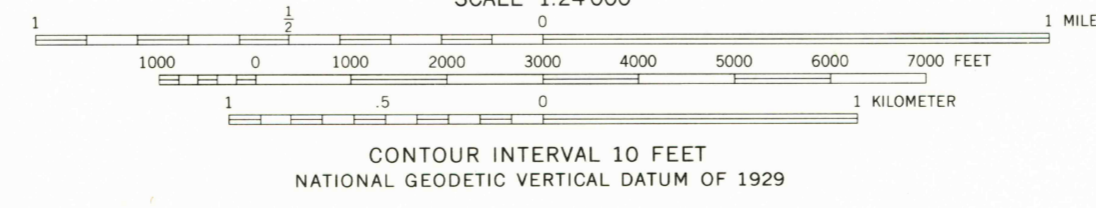
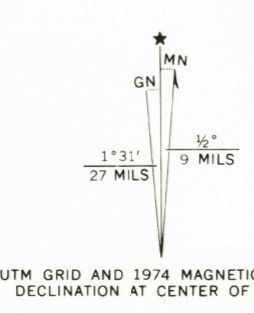
UNITED STATES  
DEPARTMENT OF THE INTERIOR  
GEOLOGICAL SURVEY

HARTSFIELD QUADRANGLE  
GEORGIA - COLQUITT CO.  
7.5 MINUTE SERIES (TOPOGRAPHIC)

SCALE CITY



Mapped, edited, and published by the Geological Survey  
Control by USGS, NOS/NOAA, and Georgia Geodetic Survey  
Topography by photogrammetric methods from aerial photographs  
taken 1974. Field checked 1974  
Projection and 10,000-foot grid ticks: Georgia coordinate  
system, west zone (transverse Mercator)  
1000-meter Universal Transverse Mercator grid ticks,  
zone 17, shown in blue. 1927 North American datum  
Fine red dashed lines indicate selected fence and field lines where  
generally visible on aerial photographs. This information is unchecked



CONTOUR INTERVAL 10 FEET  
NATIONAL GEODETIC VERTICAL DATUM OF 1929



ROAD CLASSIFICATION

Primary highway, hard surface	Light-duty road, hard or improved surface
Secondary highway, hard surface	Unimproved road
Interstate Route	U. S. Route
	State Route

THIS MAP COMPLIES WITH NATIONAL MAP ACCURACY STANDARDS  
FOR SALE BY U. S. GEOLOGICAL SURVEY, RESTON, VIRGINIA 22092  
A FOLDER DESCRIBING TOPOGRAPHIC MAPS AND SYMBOLS IS AVAILABLE ON REQUEST

USGS  
Historical File  
Topographic Division

HARTSFIELD, GA.  
N3107.5—W8352.5/7.5  
1974  
AMS 4246 III NW—SERIES V845

AUG 0 1 1977

2900