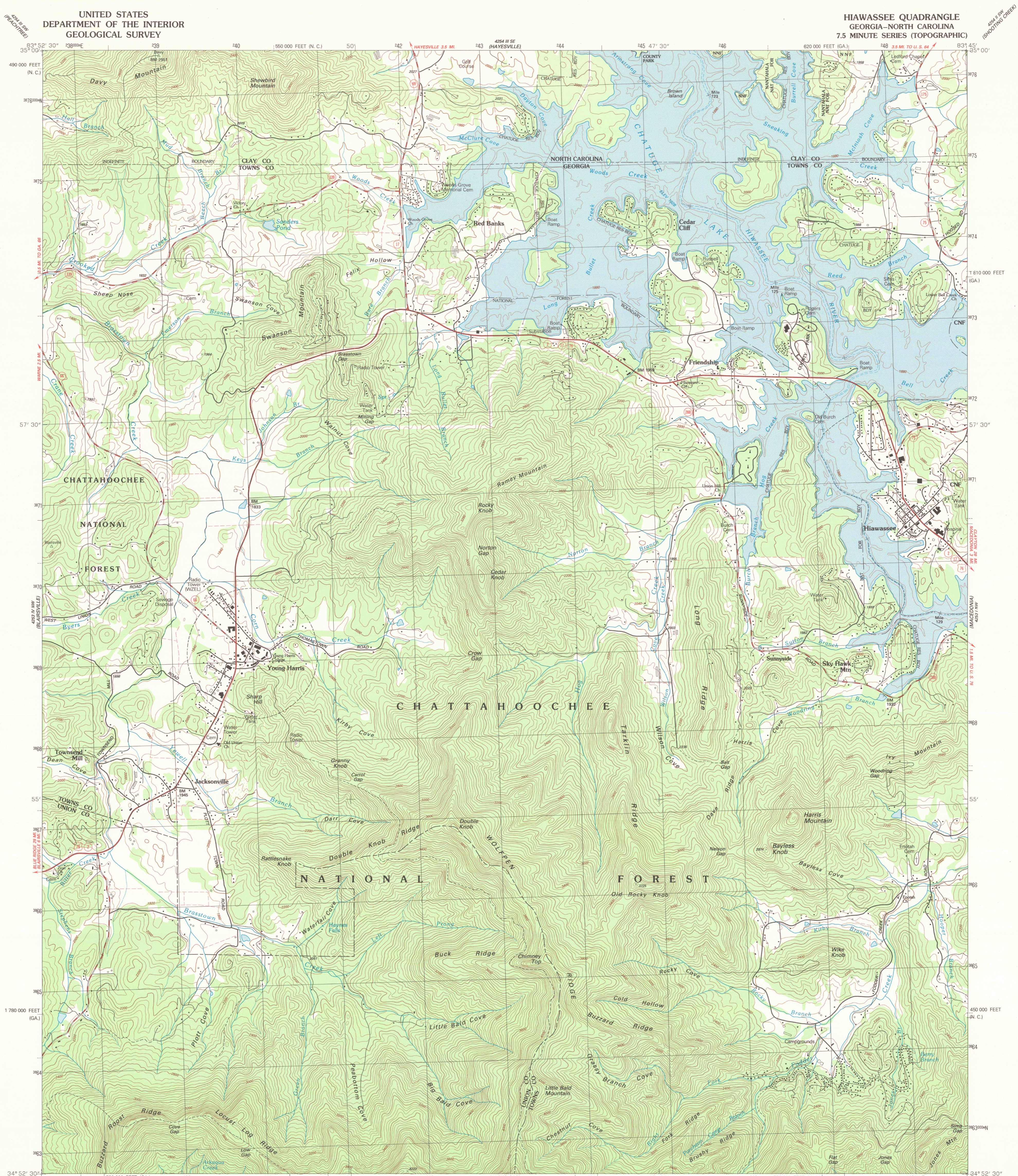
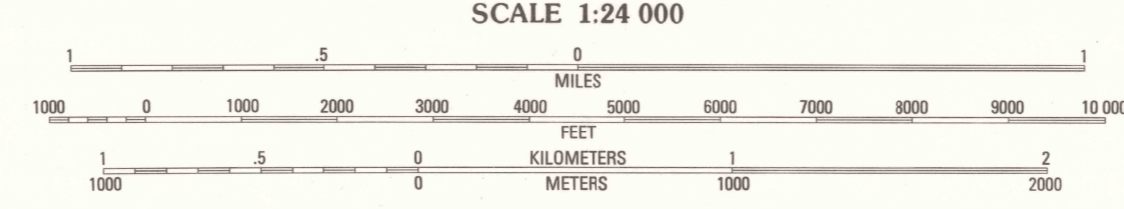
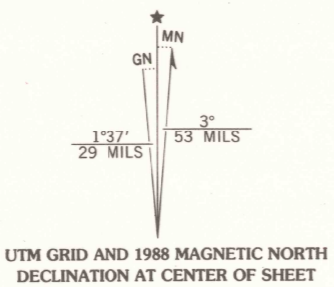


UNITED STATES
DEPARTMENT OF THE INTERIOR
GEOLOGICAL SURVEY

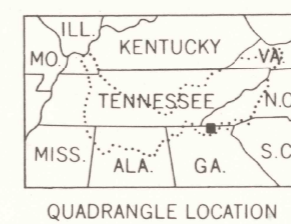
HIWASSEE QUADRANGLE
GEORGIA-NORTH CAROLINA
7.5 MINUTE SERIES (TOPOGRAPHIC)



Produced by the United States Geological Survey
Control by USGS, NOS/NOAA and TVA
Topography by photogrammetric methods from aerial photographs
taken 1975 and 1981. Field checked 1988. Map edited 1988
Supersedes map dated 1966
Underwater contours in Chatahoochee Lake taken from
TVA quadrangle Hiwassee dated 1966
Projection: Georgia coordinate system, west zone
(transverse Mercator)
10,000-foot grid ticks: Georgia coordinate
system, west zone and North Carolina coordinate system
1000-meter Universal Transverse Mercator grid, zone 17
1927 North American Datum
To place on the predicted North American Datum 1983,
move the projection lines 8 meters south and
9 meters west as shown by dashed corner ticks
There may be private inholdings within the boundaries of
the National or State reservations shown on this map
Fine red dashed lines indicate selected fence and field lines where
generally visible on aerial photographs. This information is unchecked



THIS MAP COMPLIES WITH NATIONAL MAP ACCURACY STANDARDS
FOR SALE BY U. S. GEOLOGICAL SURVEY, DENVER, COLORADO 80225, OR RESTON, VIRGINIA 22092
AND U. S. TENNESSEE VALLEY AUTHORITY, CHATTANOOGA 37401 OR KNOXVILLE, TENNESSEE 37902
A FOLDER DESCRIBING TOPOGRAPHIC MAPS AND SYMBOLS IS AVAILABLE ON REQUEST



Primary highway, hard surface Light-duty road, hard or improved surface
Secondary highway, hard surface Unimproved road
Interstate Route U. S. Route State Route



HIWASSEE, GA.-N. C.
34083-17-TF-024
1988
DMA 4253 IV NE-SERIES V845

