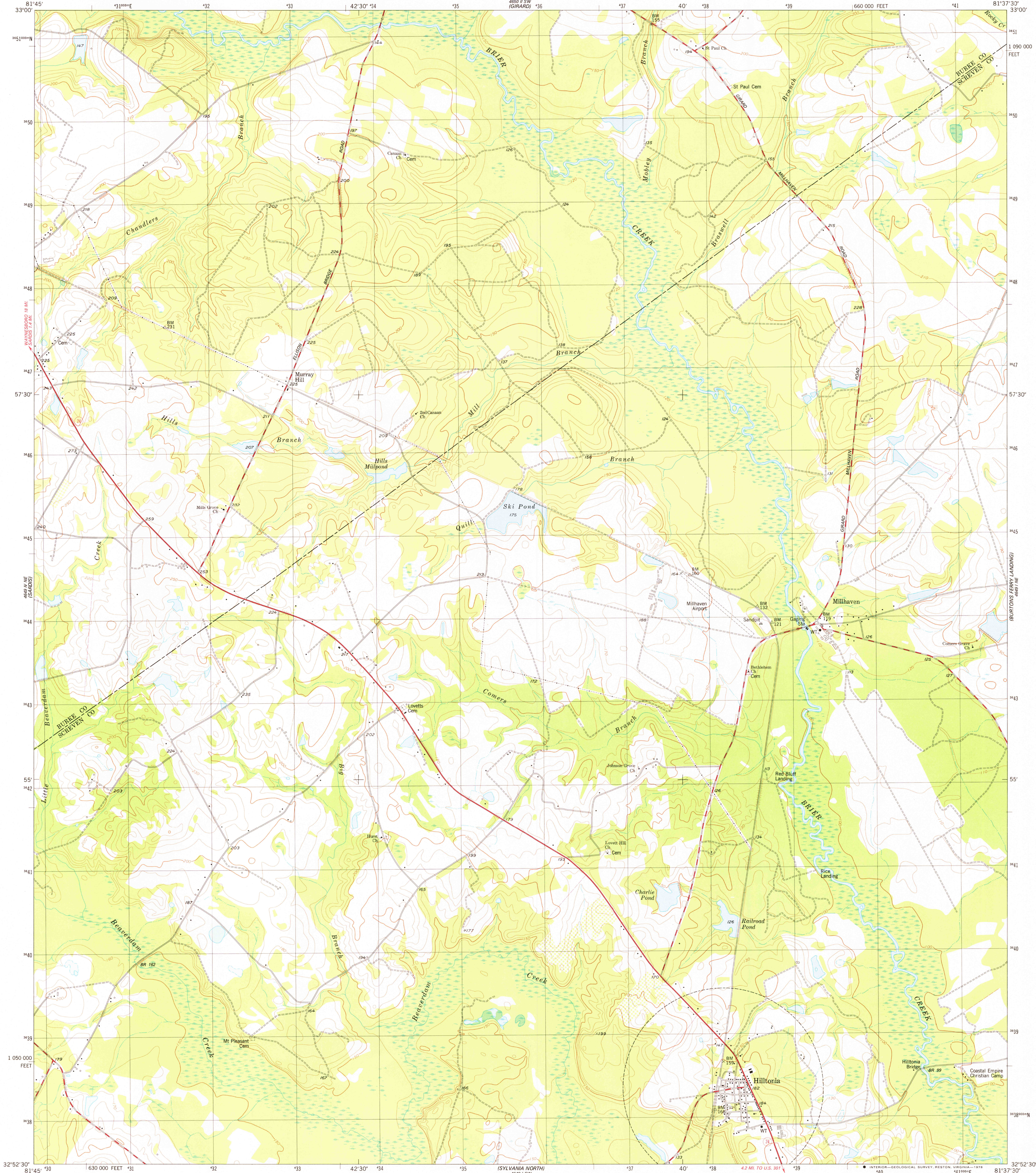


UNITED STATES  
DEPARTMENT OF THE INTERIOR  
GEOLOGICAL SURVEY

HILLTONIA QUADRANGLE  
GEORGIA  
7.5 MINUTE SERIES (TOPOGRAPHIC)  
NW/4 HILLTONIA 15' QUADRANGLE



Mapped, edited, and published by the Geological Survey  
Control by USGS, NOS/NOAA, and Georgia Geodetic Survey  
Topography by photogrammetric methods from aerial photographs  
taken 1972. Field checked 1975. Map edited 1978  
Projection and 10,000-foot grid ticks: Georgia coordinate  
system, east zone (transverse Mercator)  
1000-meter Universal Transverse Mercator grid, zone 17.  
1927 North American datum  
Fine red dashed lines indicate selected fence and field lines where  
generally visible on aerial photographs. This information is unchecked

UTM GRID AND 1978 MAGNETIC NORTH  
DECLINATION AT CENTER OF SHEET

SCALE 1:24 000  
CONTOUR INTERVAL 10 FEET  
NATIONAL GEODETIC VERTICAL DATUM OF 1929



ROAD CLASSIFICATION  
Primary highway, hard surface  
Secondary highway, hard surface  
Light-duty road, hard or improved surface  
Unimproved road  
Interstate Route  
U. S. Route  
State Route  
HILLTONIA, GA.  
NW/4 HILLTONIA 15' QUADRANGLE  
N3252.5-W8137.5/7.5  
1978  
AMS 4649 I NW-SERIES V845

THIS MAP COMPLIES WITH NATIONAL MAP ACCURACY STANDARDS  
FOR SALE BY U.S. GEOLOGICAL SURVEY, RESTON, VIRGINIA 22092  
A FOLDER DESCRIBING TOPOGRAPHIC MAPS AND SYMBOLS IS AVAILABLE ON REQUEST

SEP 18 1978