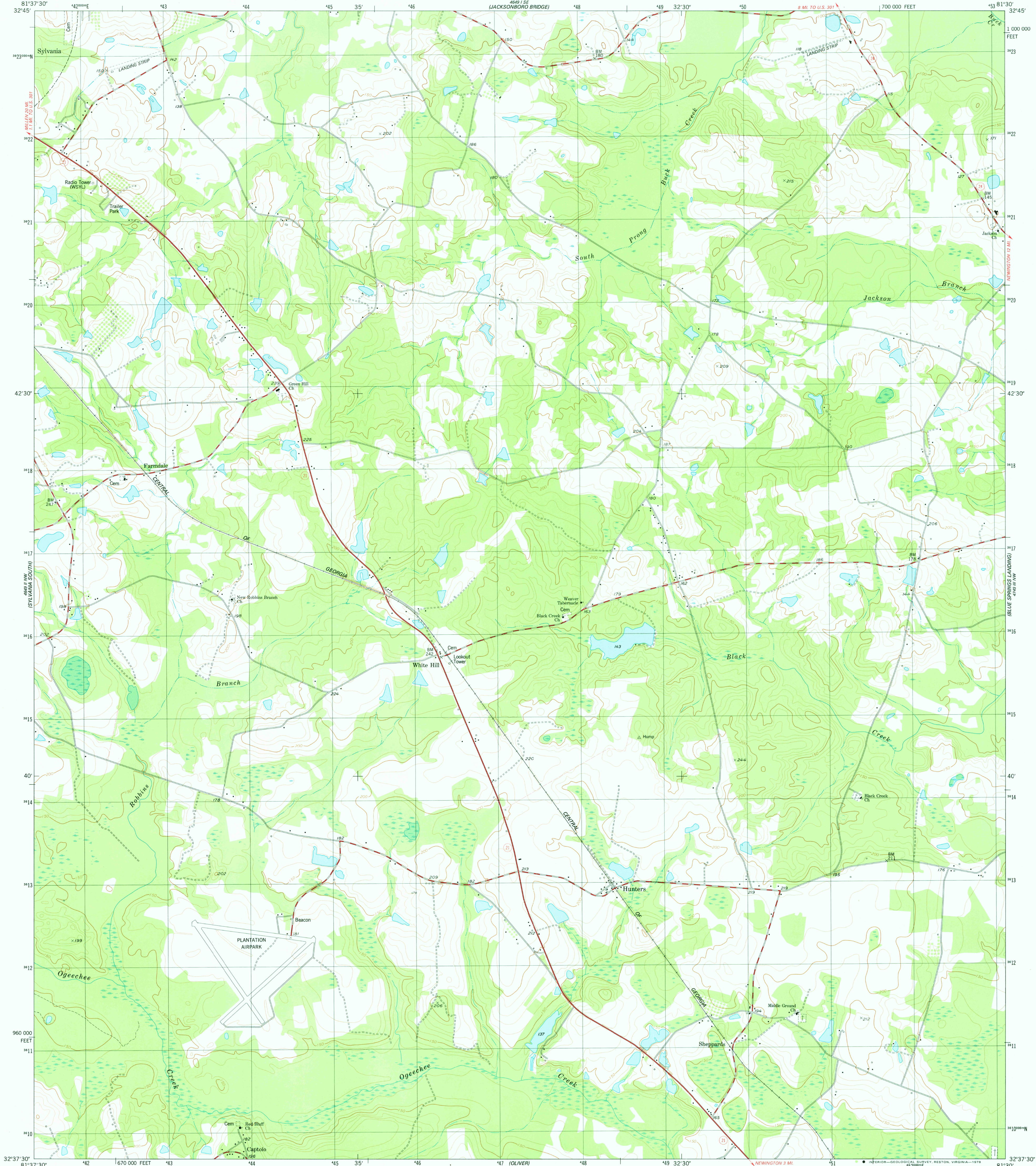


UNITED STATES  
DEPARTMENT OF THE INTERIOR  
GEOLOGICAL SURVEY

HUNTERS QUADRANGLE  
GEORGIA—SCREVEN COUNTY  
7.5 MINUTE SERIES (TOPOGRAPHIC)  
NE/4 OLIVER 15' QUADRANGLE

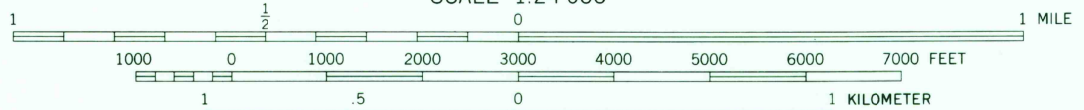
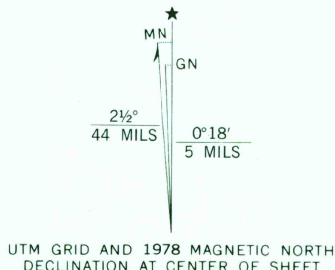


Mapped, edited, and published by the Geological Survey  
Control by USGS and NOS/NOAA

Topography by photogrammetric methods from aerial photographs  
taken 1972. Field checked 1976. Map edited 1978

Projection and 10,000-foot grid ticks: Georgia coordinate  
system, east zone (transverse Mercator)  
1000-meter Universal Transverse Mercator grid,  
zone 17. 1927 North American datum

Fine red dashed lines indicate selected fence and field lines where  
generally visible on aerial photographs. This information is unchecked



CONTOUR INTERVAL 10 FEET  
NATIONAL GEODETIC VERTICAL DATUM OF 1929



ROAD CLASSIFICATION	
Primary highway, hard surface	Light-duty road, hard or improved surface
Secondary highway, hard surface	Unimproved road
Interstate Route	U. S. Route
	State Route

USGS  
Historical File  
Topographic Division

HUNTERS, GA.  
NE/4 OLIVER 15' QUADRANGLE  
N3237.5-W8130/7.5

1978

AMS 4649 II NE-SERIES V845

THIS MAP COMPLIES WITH NATIONAL MAP ACCURACY STANDARDS  
FOR SALE BY U. S. GEOLOGICAL SURVEY, RESTON, VIRGINIA 22092  
A FOLDER DESCRIBING TOPOGRAPHIC MAPS AND SYMBOLS IS AVAILABLE ON REQUEST

NOV 0 6 1978

2900