

4153 III SW (DYKE)

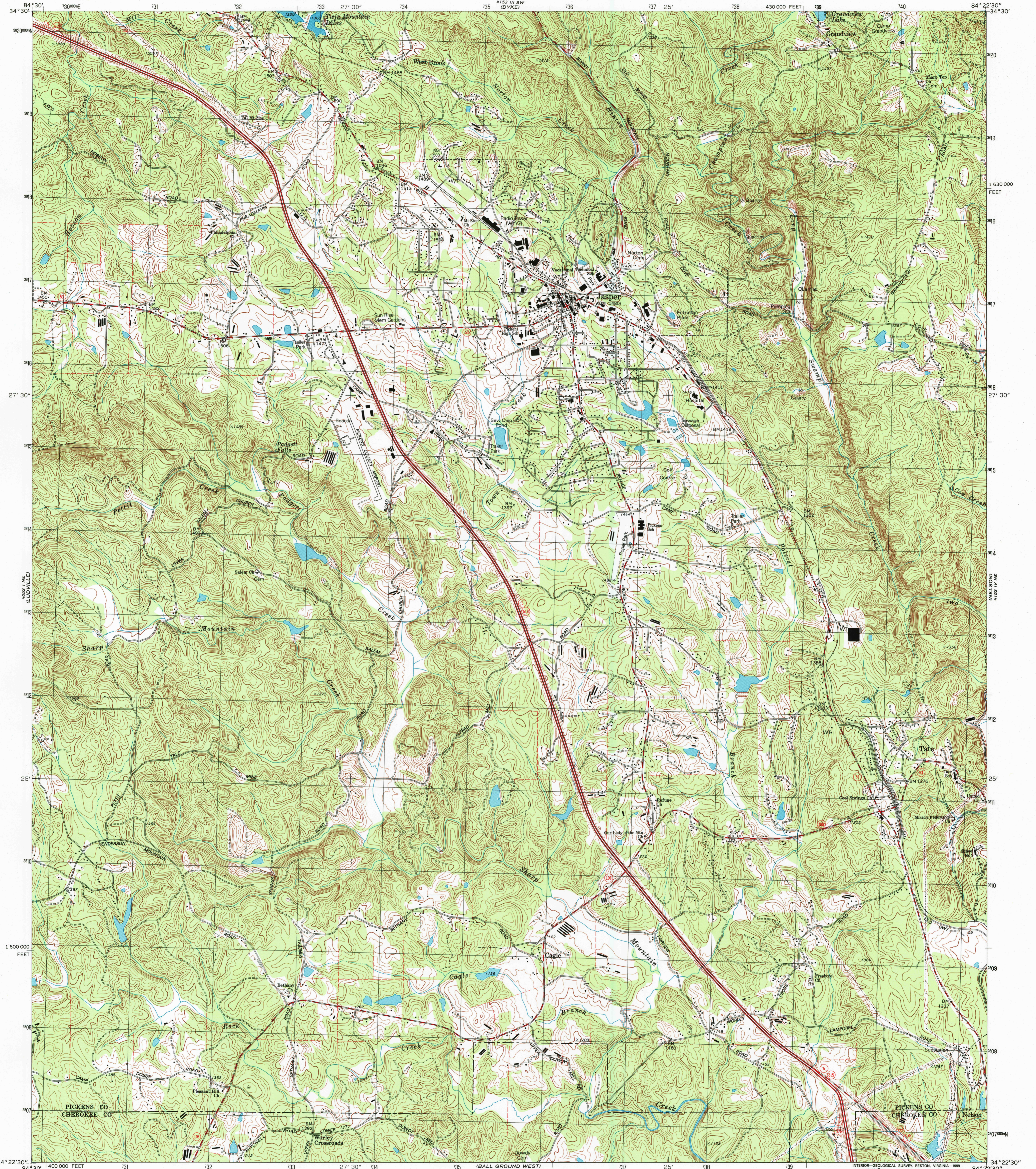


U.S. DEPARTMENT OF THE INTERIOR
U.S. GEOLOGICAL SURVEY

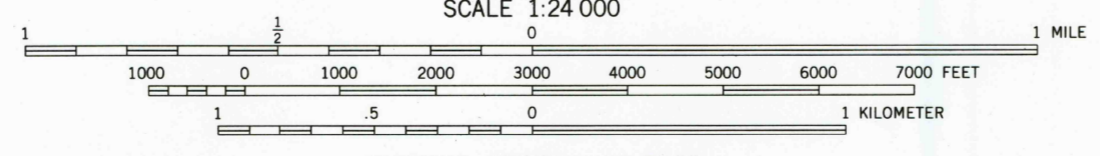
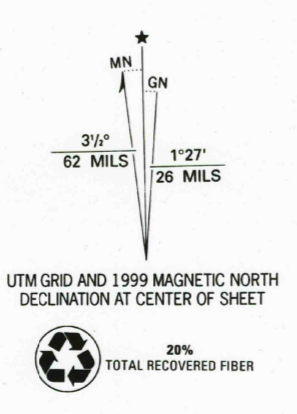


JASPER QUADRANGLE
GEORGIA
7.5 MINUTE SERIES (TOPOGRAPHIC)

4153 III SE (AMICALOLA)



Produced by the United States Geological Survey
 Derived from imagery taken 1988 and other sources. Photosinspected using imagery taken 1997; no major culture or drainage changes observed. Survey control current as of 1991
 Boundaries, other than corporate, verified 1999
 North American Datum of 1927 (NAD 27). Projection and 10 000-foot ticks: Georgia coordinate system, west zone (transverse Mercator)
 1000-meter Universal Transverse Mercator grid, zone 16
 North American Datum of 1983 (NAD 83) is shown by dashed corner ticks. The values of the shift between NAD 27 and NAD 83 for 7.5-minute intersections are obtainable from National Geodetic Survey NADCON software



CONTOUR INTERVAL 20 FEET
 NATIONAL GEODETIC VERTICAL DATUM OF 1929
 TO CONVERT FROM FEET TO METERS, MULTIPLY BY 0.3048

THIS MAP COMPLIES WITH NATIONAL MAP ACCURACY STANDARDS
 FOR SALE BY U.S. GEOLOGICAL SURVEY, P.O. BOX 25286, DENVER, COLORADO 80225
 A FOLDER DESCRIBING TOPOGRAPHIC MAPS AND SYMBOLS IS AVAILABLE ON REQUEST



ROAD CLASSIFICATION

Primary highway, hard surface	Light-duty road, hard or improved surface
Secondary highway, hard surface	Unimproved road
Interstate Route	U.S. Route
	State Route

RECEIVED
 DEC 31 1999

JASPER, GA.
 1997

NIMA 4152 IV NW-SERIES V845

