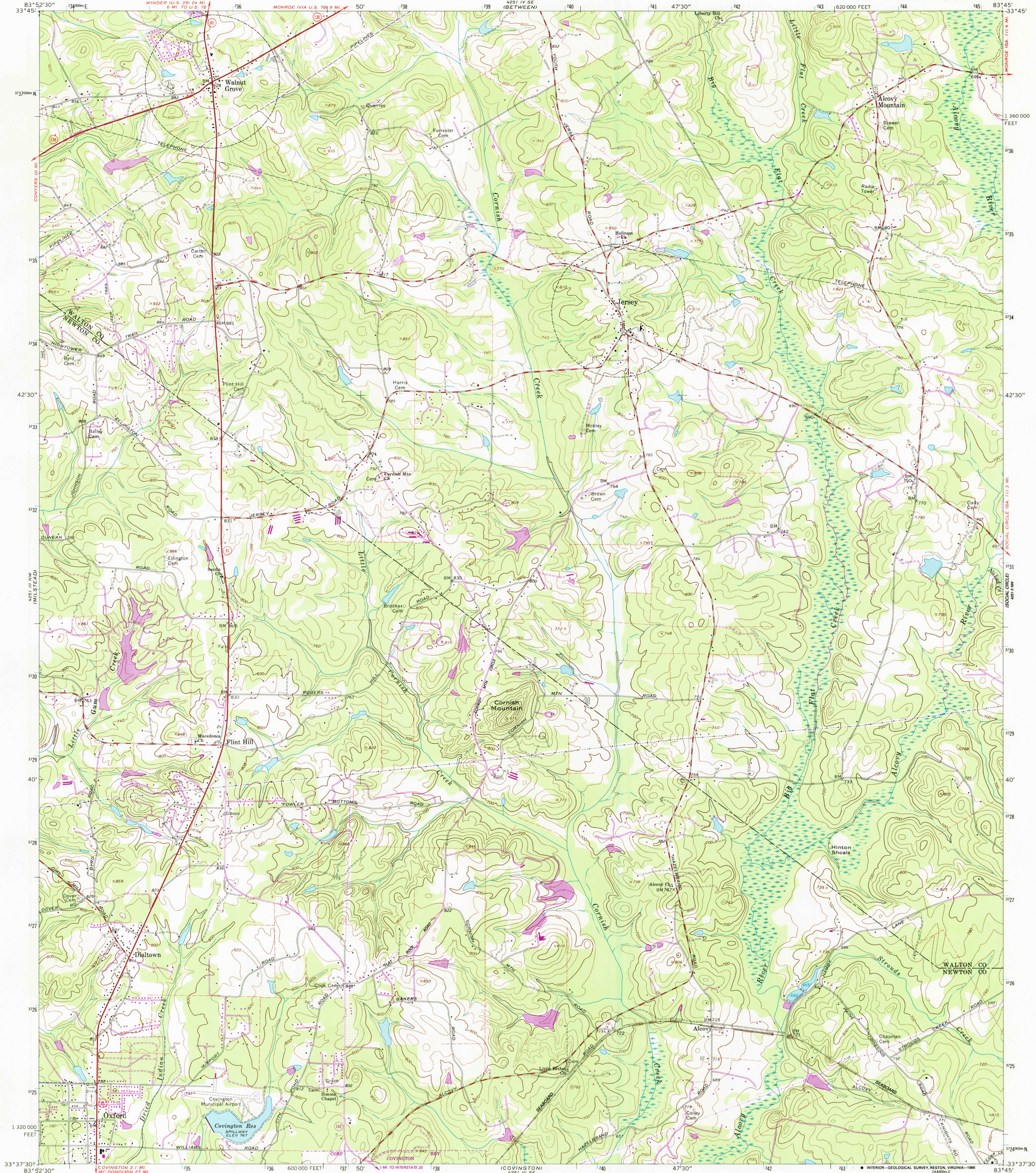
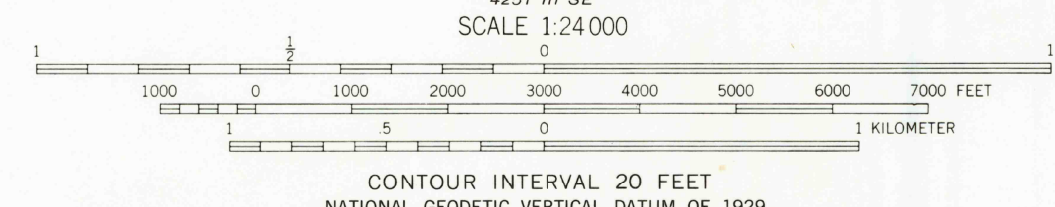
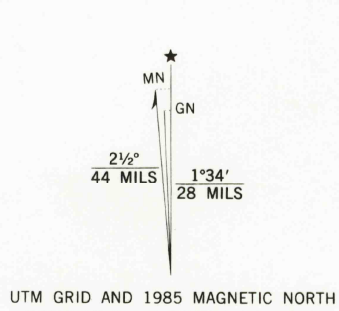


UNITED STATES
DEPARTMENT OF THE INTERIOR
GEOLOGICAL SURVEY

JERSEY QUADRANGLE
GEORGIA
7.5 MINUTE SERIES (TOPOGRAPHIC)

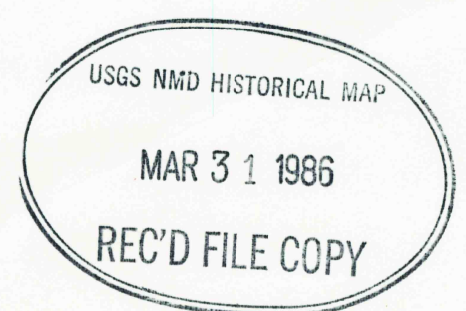


Mapped, edited, and published by the Geological Survey
Control by USGS, NOS/NOAA, USCE, and Georgia Geodetic Survey
Topography by photogrammetric methods from aerial
photographs taken 1962. Field checked 1964
Polyconic projection. 10,000-foot grid ticks based on Georgia
coordinate system, west zone
1000-meter Universal Transverse Mercator grid ticks,
zone 17, shown in blue
1927 North American Datum
To place on the predicted North American Datum 1983
move the projection lines 11 meters south and
9 meters west as shown by dashed corner ticks
Fine red dashed lines indicate selected fence and field lines where
generally visible on aerial photographs. This information is unchecked
with State of Georgia agencies from aerial photographs taken 1981
and other sources. This information not field checked
Map edited 1985



THIS MAP COMPLIES WITH NATIONAL MAP ACCURACY STANDARDS
FOR SALE BY U. S. GEOLOGICAL SURVEY, RESTON, VIRGINIA 22092
A FOLDER DESCRIBING TOPOGRAPHIC MAPS AND SYMBOLS IS AVAILABLE ON REQUEST

ROAD CLASSIFICATION
Heavy-duty ——— Light-duty ———
Medium-duty ——— Unimproved dirt ———
State Route ———



JERSEY, GA.
33083-F7-TF-024
1964
PHOTOREVISED 1985
DMA 4251 III NE—SERIES V845