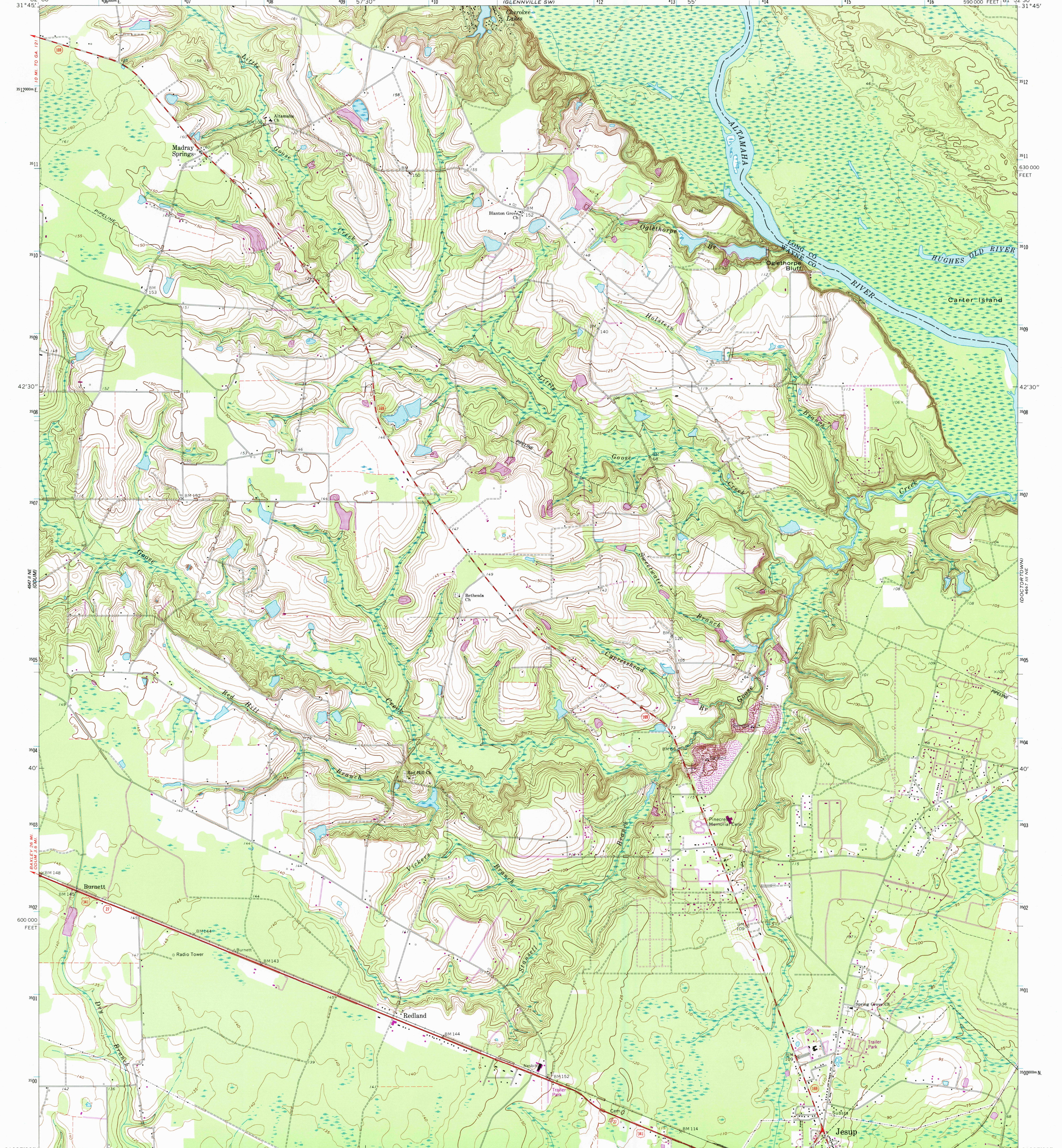
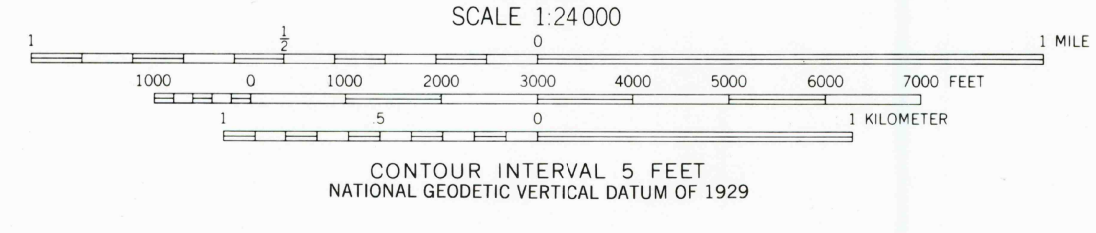
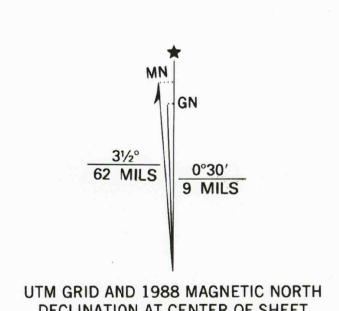


ALPHABETIC
16471 SE

16471 SE
GLENNVILLE SE



Mapped, edited, and published by the Geological Survey
Control by USGS and USC&GS
Topography by photogrammetric methods from aerial photographs taken 1969. Field checked 1970
Polyconic projection. 1927 North American datum
10,000-foot grid based on Georgia coordinate system, east zone
1000-meter Universal Transverse Mercator grid ticks, zone 17, shown in blue
To place on the predicted North American Datum 1983, move the projection lines 18 meters south and 15 meters west as shown by dashed corner ticks
Fine red dashed lines indicate selected fence and field lines where generally visible on aerial photographs. This information is unchecked
Revisions shown in purple compiled from aerial photographs taken 1983 and other sources
This information not field checked. Map edited 1988



ROAD CLASSIFICATION

Primary highway, hard surface	Light-duty road, hard or improved surface
Secondary highway, hard surface	Unimproved road
Interstate Route	U. S. Route
	State Route

THIS MAP COMPLIES WITH NATIONAL MAP ACCURACY STANDARDS
FOR SALE BY U. S. GEOLOGICAL SURVEY, DENVER, COLORADO 80225, OR RESTON, VIRGINIA 22092
A FOLDER DESCRIBING TOPOGRAPHIC MAPS AND SYMBOLS IS AVAILABLE ON REQUEST

USGS 1:24,000 HISTORICAL MAP
DEC 6 1988
REC'D FILE COPY

JESUP NW, GA.
31081-F8-TF-024
1970
PHOTOREVISED 1988
DMA 4647 III NW-SERIES V845