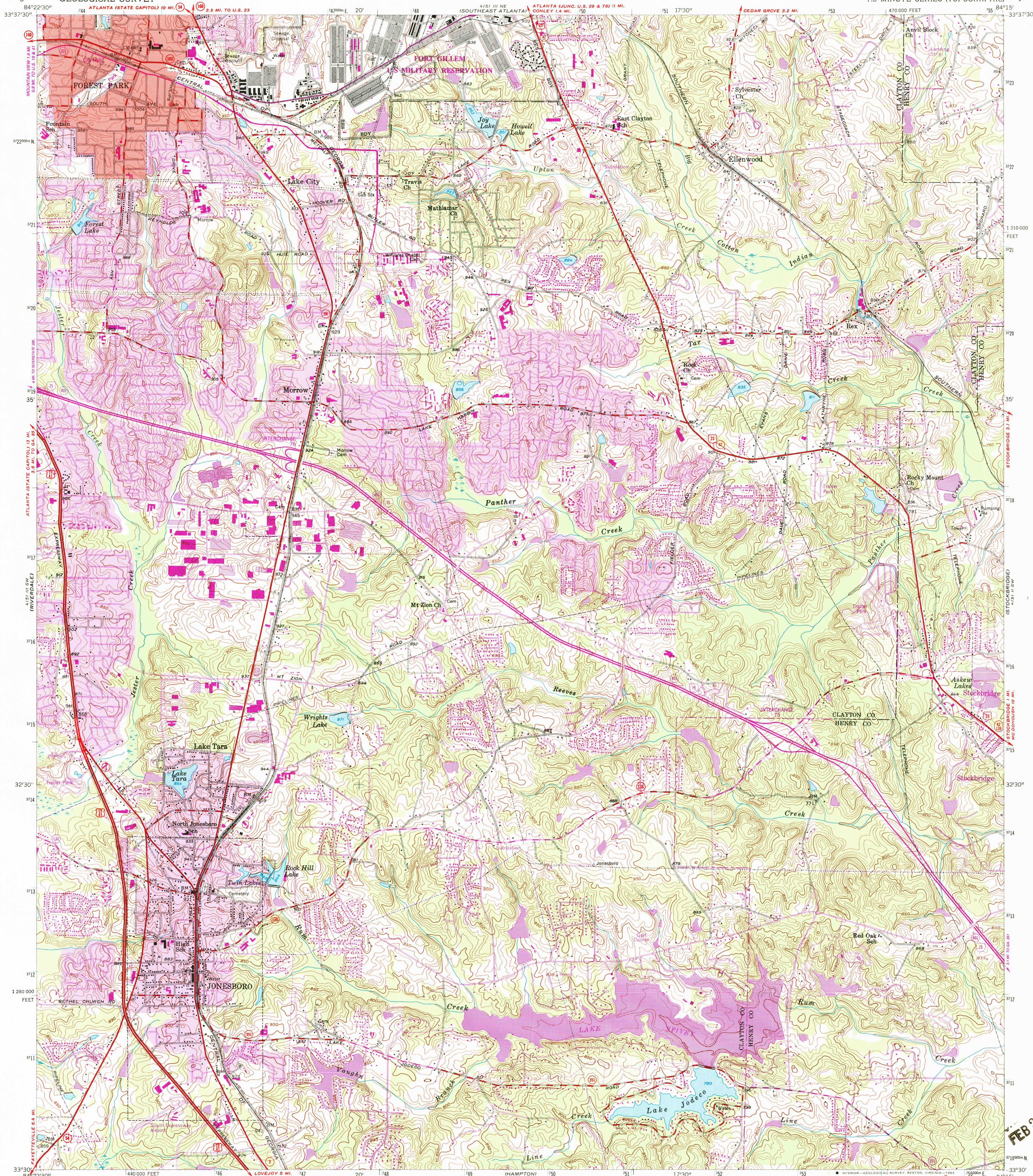


UNITED STATES
DEPARTMENT OF THE INTERIOR
GEOLOGICAL SURVEY

JONESBORO QUADRANGLE
GEORGIA
7.5 MINUTE SERIES (TOPOGRAPHIC)



Mapped, edited, and published by the Geological Survey

Control by USGS, NOS/NOAA, and Georgia Geodetic Survey

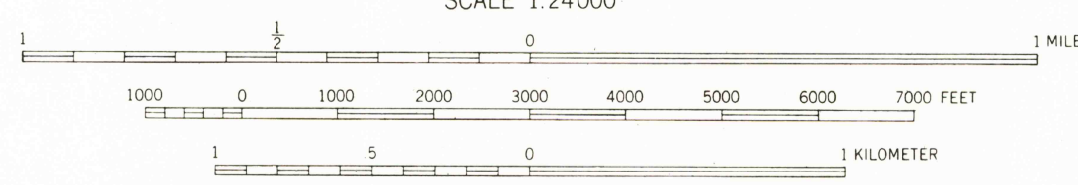
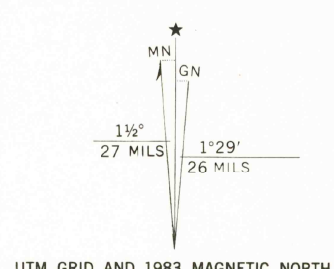
Topography by photogrammetric methods from aerial photographs taken 1952. Field checked 1954.

Polyconic projection. 10,000-foot grid ticks based on Georgia coordinate system, west zone. 1000-meter Universal Transverse Mercator grid ticks, zone 16, shown in blue 1927 North American Datum. To place on the predicted North American Datum 1983 move the projection lines 11 meters south and 8 meters west as shown by dashed corner ticks.

Red tint indicates areas in which only landmark buildings are shown. There may be private inholdings within the boundaries of the National or State reservations shown on this map.

Revisions shown in purple and woodland compiled from aerial photographs taken 1981 and other sources. This information not field checked. Map edited 1983.

Purple tint indicates extension of urban areas.



THIS MAP COMPLIES WITH NATIONAL MAP ACCURACY STANDARDS
FOR SALE BY U. S. GEOLOGICAL SURVEY, RESTON, VIRGINIA 22092
A FOLDER DESCRIBING TOPOGRAPHIC MAPS AND SYMBOLS IS AVAILABLE ON REQUEST



ROAD CLASSIFICATION	
Heavy-duty	Light-duty
Medium-duty	Unimproved dirt
Interstate Route	U.S. Route
	State Route

JONESBORO, GA.
33084-E3-TF-024

1954
PHOTOREVISED 1983
DMA 4151 III SE - SERIES V845

FEB 23 1984