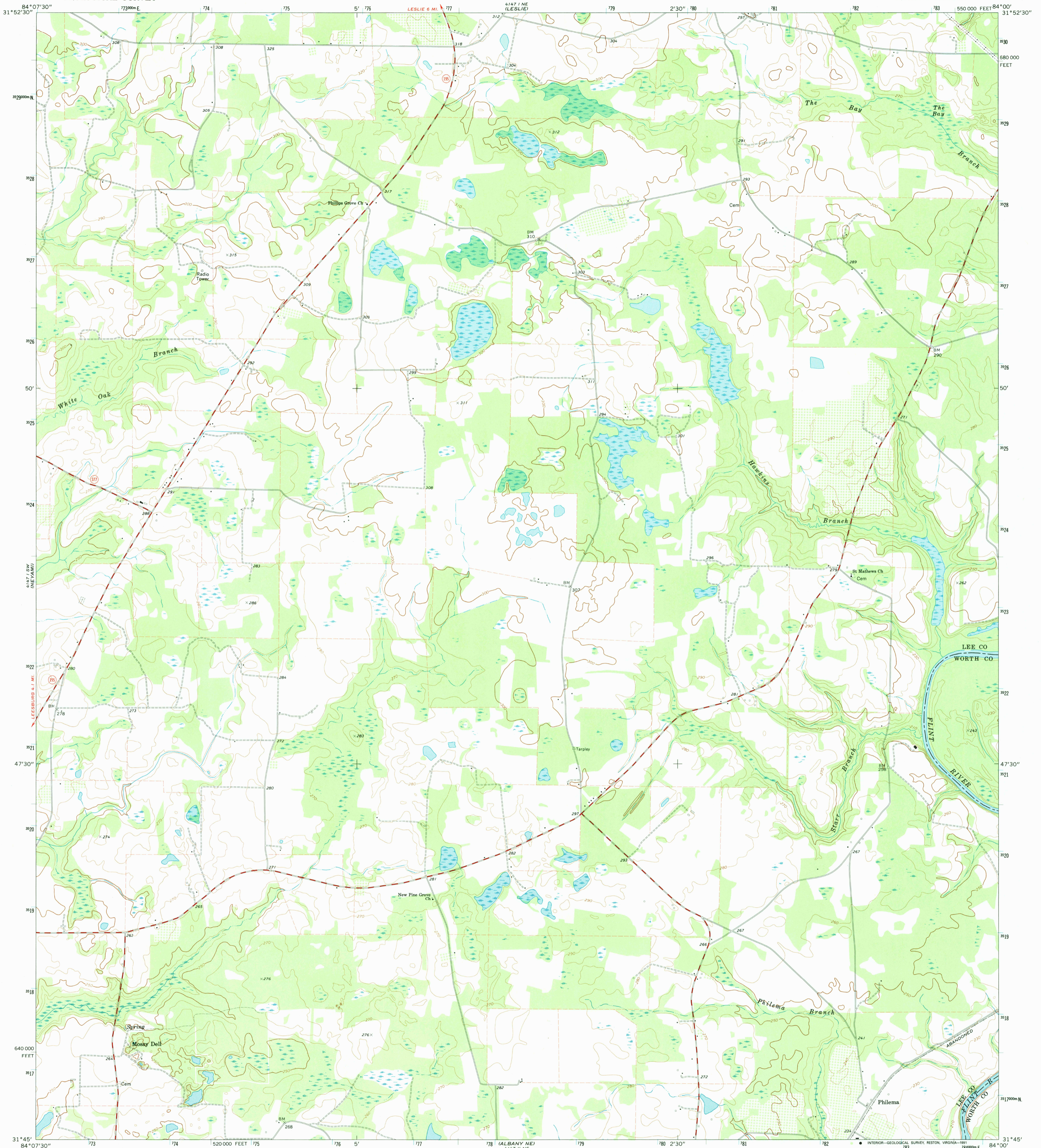


4147 1 NW
6M E 837

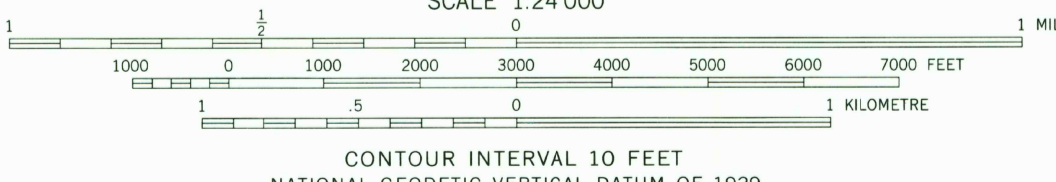
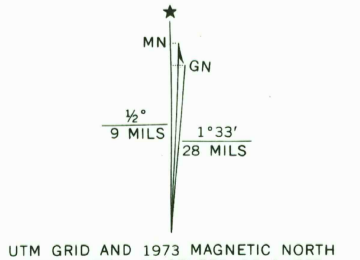
UNITED STATES
DEPARTMENT OF THE INTERIOR
GEOLOGICAL SURVEY

STATE OF GEORGIA
DEPARTMENT OF NATURAL RESOURCES
EARTH AND WATER DIVISION

LESLIE SE QUADRANGLE
GEORGIA
7.5 MINUTE SERIES (TOPOGRAPHIC)
SE/4 LESLIE 15' QUADRANGLE



Mapped, edited, and published by the Geological Survey
Control by USGS, NOS/NOAA, and Georgia Geodetic Survey
Topography by photogrammetric methods from aerial photographs
taken 1972. Field checked 1973
Projection and 10,000-foot grid ticks: Georgia coordinate
system, west zone (transverse Mercator)
1000-metre Universal Transverse Mercator grid ticks,
zone 15, shown in blue. 1927 North American datum
Fine red dashed lines indicate selected fence and field lines where
generally visible on aerial photographs. This information is unchecked
Map photostamped 1983
No major culture or drainage changes observed



CONTOUR INTERVAL 10 FEET
NATIONAL GEODETIC VERTICAL DATUM OF 1929

THIS MAP COMPLIES WITH NATIONAL MAP ACCURACY STANDARDS
FOR SALE BY U. S. GEOLOGICAL SURVEY
DENVER, COLORADO 80225, OR RESTON, VIRGINIA 22092
A FOLDER DESCRIBING TOPOGRAPHIC MAPS AND SYMBOLS IS AVAILABLE ON REQUEST



ROAD CLASSIFICATION

Primary highway, hard surface	Light-duty road, hard or improved surface
Secondary highway, hard surface	Unimproved road
Interstate Route	U. S. Route
	State Route

USGS NMD HISTORICAL MAP
JUN 26 1991
REC'D FILE COPY

LESLIE SE, GA.
SE/4 LESLIE 15' QUADRANGLE
N3145-W8400/7.5
1973
PHOTOINSPECTED 1983
AMS 4147 1 SE-SERIES V845

LEESBURG
4147 1 SW

GOLESBURY
4147 1 NW