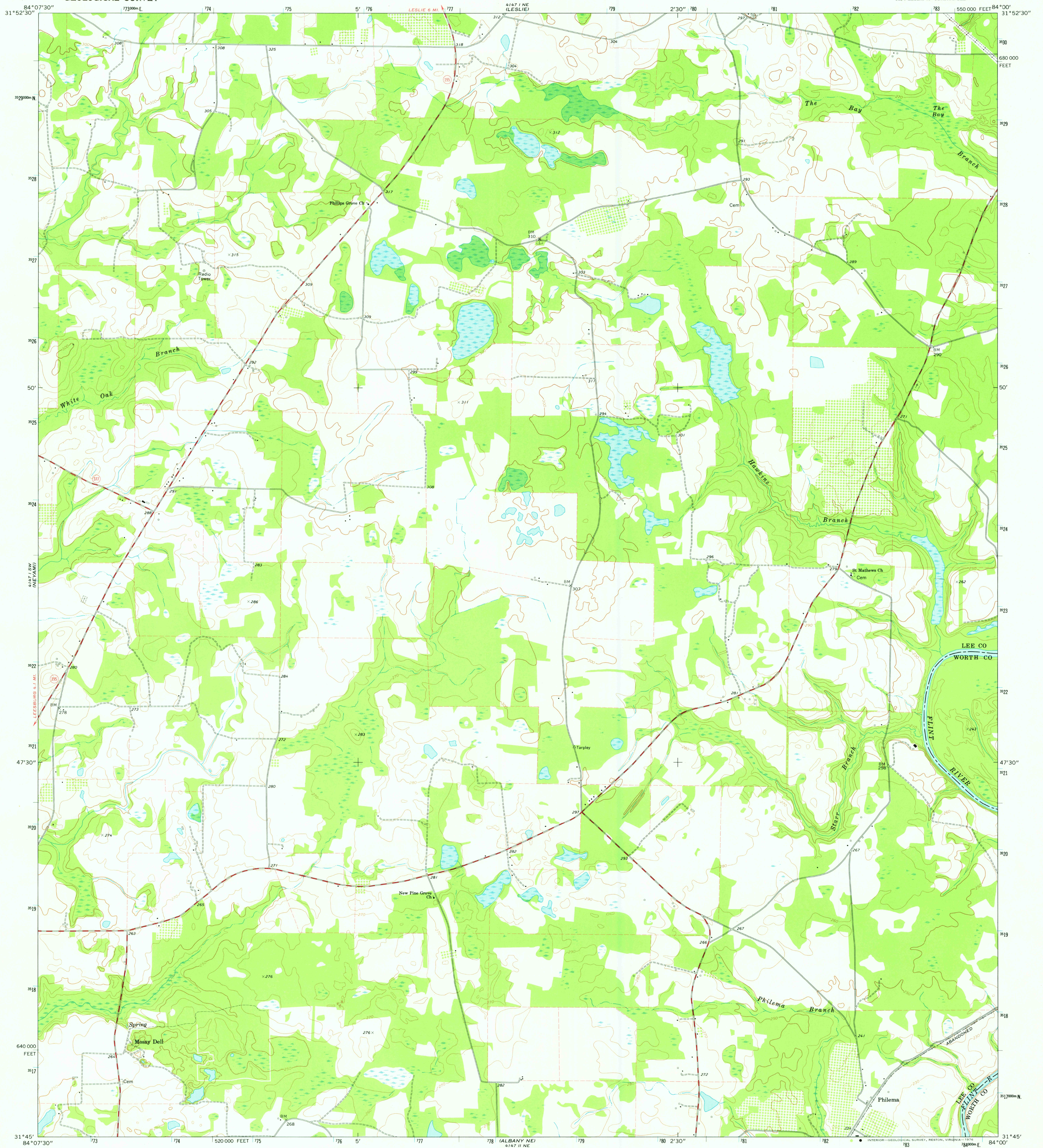


SW 1/4 NW 1/4 EAST

UNITED STATES  
DEPARTMENT OF THE INTERIOR  
GEOLOGICAL SURVEY

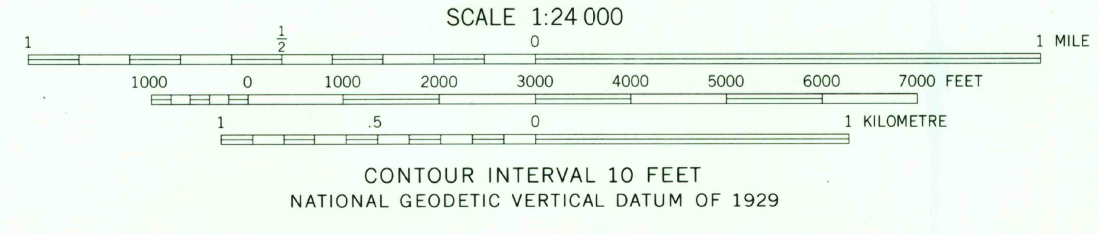
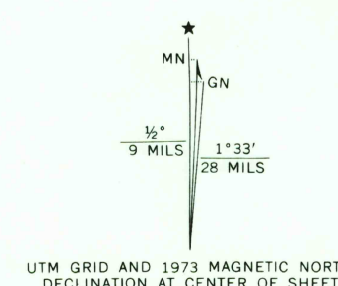
STATE OF GEORGIA  
DEPARTMENT OF NATURAL RESOURCES  
EARTH AND WATER DIVISION

LESLIE SE QUADRANGLE  
GEORGIA  
7.5 MINUTE SERIES (TOPOGRAPHIC)  
SE 1/4 LESLIE 15' QUADRANGLE



SW 1/4 NW 1/4

Mapped, edited, and published by the Geological Survey  
Control by USGS, NOS/NOAA, and Georgia Geodetic Survey  
Topography by photogrammetric methods from aerial photographs taken 1972. Field checked 1973  
Projection and 10,000-foot grid ticks: Georgia coordinate system, west zone (transverse Mercator)  
1000-metre Universal Transverse Mercator grid ticks, zone 16, shown in blue. 1927 North American datum  
Fine red dashed lines indicate selected fence and field lines where generally visible on aerial photographs. This information is unchecked



ROAD CLASSIFICATION

Primary highway, hard surface	Light-duty road, hard or improved surface
Secondary highway, hard surface	Unimproved road
Interstate Route	U. S. Route
	State Route

THIS MAP COMPLIES WITH NATIONAL MAP ACCURACY STANDARDS FOR SALE BY U. S. GEOLOGICAL SURVEY, RESTON, VIRGINIA 22092 A FOLDER DESCRIBING TOPOGRAPHIC MAPS AND SYMBOLS IS AVAILABLE ON REQUEST

LESLIE SE, GA.  
SE 1/4 LESLIE 15' QUADRANGLE  
N3145-WB400/7.5  
1973  
AUG 6 1976  
AMS 4147 1 SE-SERIES V845

USGS  
Historical File  
Topographic Division