

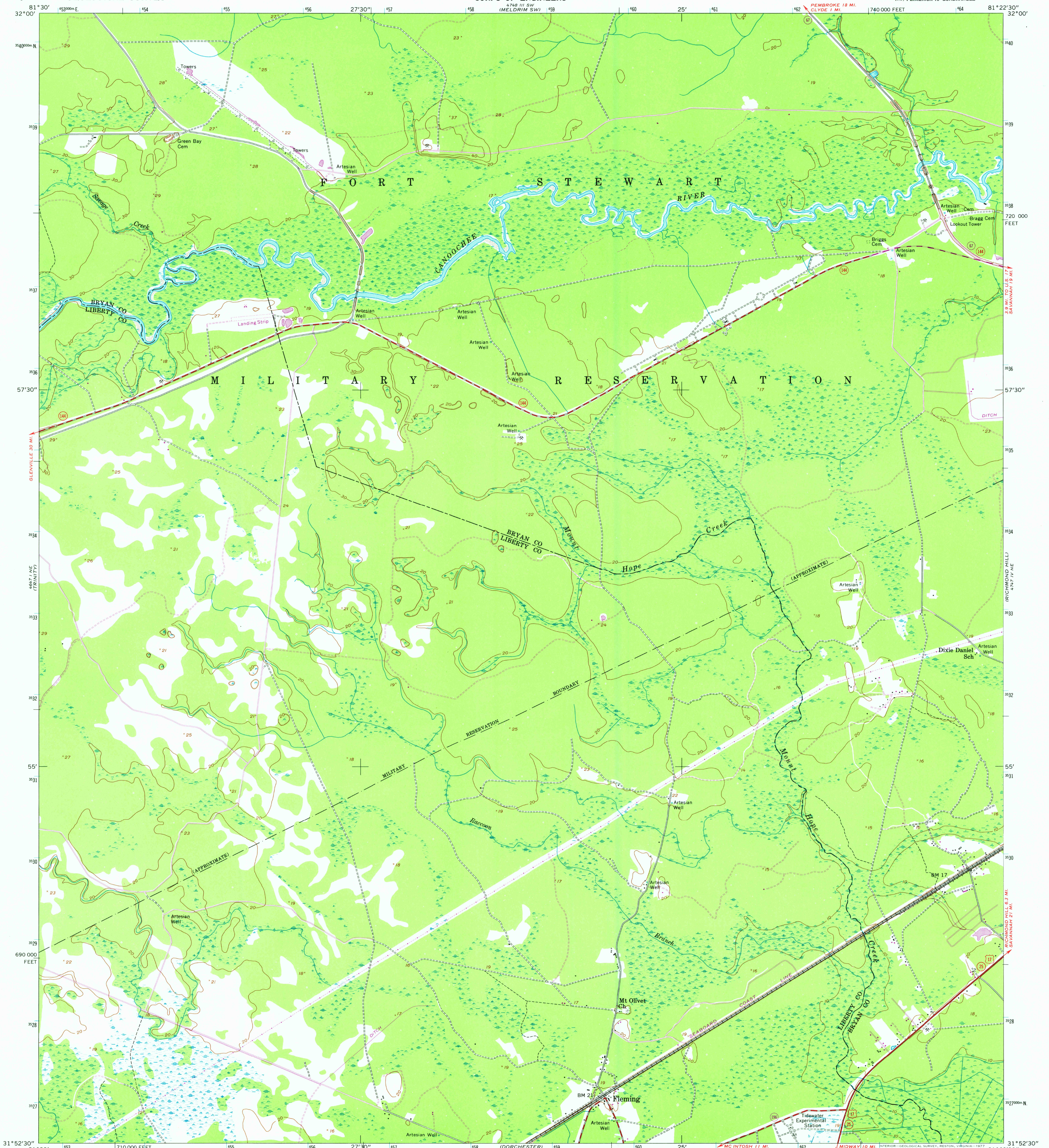
4647 I SE
(LET FORD)

UNITED STATES
DEPARTMENT OF THE INTERIOR
GEOLOGICAL SURVEY

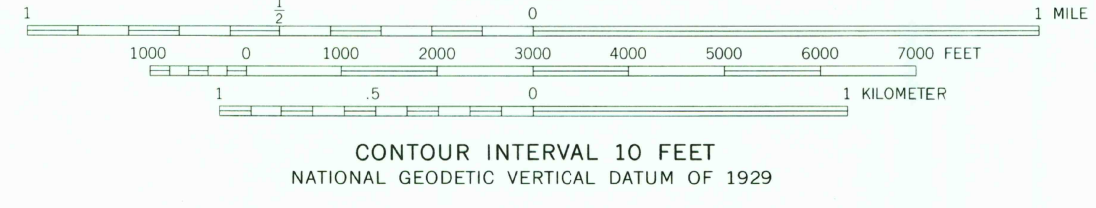
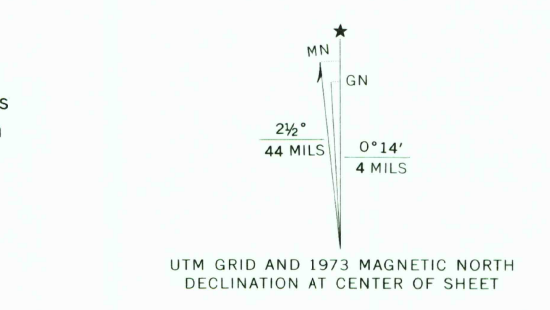
UNITED STATES
DEPARTMENT OF THE ARMY
CORPS OF ENGINEERS

LIMERICK NW QUADRANGLE
GEORGIA
7.5 MINUTE SERIES (TOPOGRAPHIC)
NW/4 LIMERICK 15' QUADRANGLE

4748 II SE
(MELDRIM SE)



Maped by the Army Map Service
Published for civil use by the Geological Survey
Control by USC&GS, USCE, and Georgia Geodetic Survey
Topography from aerial photographs by photogrammetric methods
Aerial photographs taken 1947. Planimetric detail revised from
aerial photographs taken 1957. Field check 1958
Polyconic projection. 1927 North American datum
10,000-foot grid based on Georgia coordinate system,
east zone.
1000-meter Universal Transverse Mercator grid ticks,
zone 17, shown in blue
Revisions shown in purple compiled by the Geological Survey in
cooperation with State of Georgia agencies from aerial
photographs taken 1973. This information not field checked



ROAD CLASSIFICATION

Heavy-duty	Light-duty
Medium-duty	Unimproved dirt
U.S. Route	State Route

USCS
Historical File
Topographic Division

LIMERICK NW, GA.
NW/4 LIMERICK 15' QUADRANGLE
N3152.5-W8122.5/7.5
1958
PHOTOREVISED 1973
AMS 4747 IV NW-SERIES V845

JUL 27 1977

4225