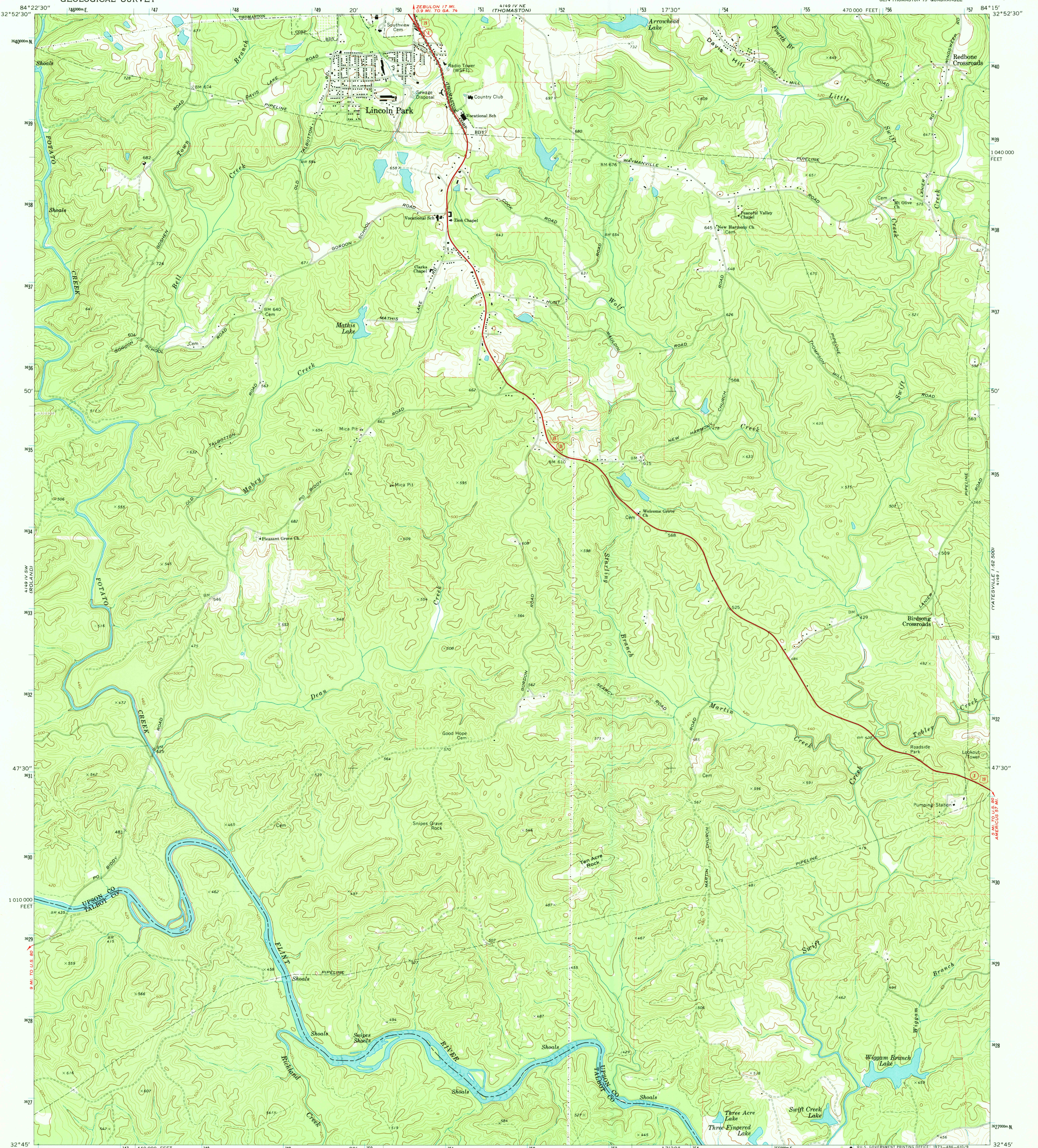


UNITED STATES
DEPARTMENT OF THE INTERIOR
GEOLOGICAL SURVEY

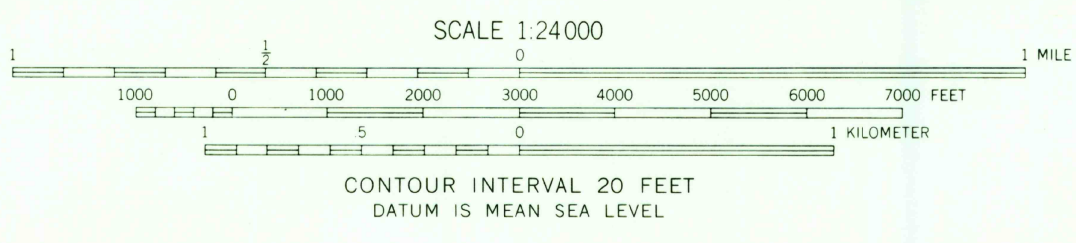
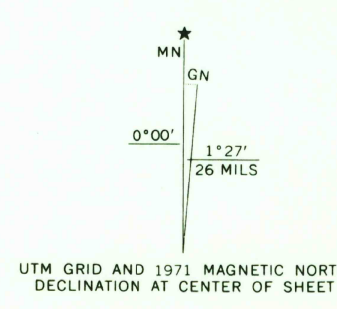
LINCOLN PARK QUADRANGLE
GEORGIA
7.5 MINUTE SERIES (TOPOGRAPHIC)



32° 52' 30" N
32° 51' 30" N
32° 50' 30" N
32° 49' 30" N
32° 48' 30" N
32° 47' 30" N
32° 46' 30" N
32° 45' 30" N
32° 44' 30" N
32° 43' 30" N
32° 42' 30" N
32° 41' 30" N
32° 40' 30" N
32° 39' 30" N
32° 38' 30" N
32° 37' 30" N
32° 36' 30" N
32° 35' 30" N
32° 34' 30" N
32° 33' 30" N
32° 32' 30" N
32° 31' 30" N
32° 30' 30" N
32° 29' 30" N
32° 28' 30" N
32° 27' 30" N
32° 26' 30" N
32° 25' 30" N
32° 24' 30" N
32° 23' 30" N
32° 22' 30" N

747 748 749 750 751 752 753 754 755
470 000 FEET 475 000 FEET 480 000 FEET 485 000 FEET 490 000 FEET 495 000 FEET 500 000 FEET 505 000 FEET 510 000 FEET 515 000 FEET 520 000 FEET 525 000 FEET 530 000 FEET 535 000 FEET 540 000 FEET 545 000 FEET 550 000 FEET 555 000 FEET 560 000 FEET 565 000 FEET 570 000 FEET 575 000 FEET 580 000 FEET 585 000 FEET 590 000 FEET 595 000 FEET 600 000 FEET 605 000 FEET 610 000 FEET 615 000 FEET 620 000 FEET 625 000 FEET 630 000 FEET 635 000 FEET 640 000 FEET 645 000 FEET 650 000 FEET 655 000 FEET 660 000 FEET 665 000 FEET 670 000 FEET 675 000 FEET 680 000 FEET 685 000 FEET 690 000 FEET 695 000 FEET 700 000 FEET 705 000 FEET 710 000 FEET 715 000 FEET 720 000 FEET 725 000 FEET 730 000 FEET 735 000 FEET 740 000 FEET 745 000 FEET 750 000 FEET 755 000 FEET 760 000 FEET 765 000 FEET 770 000 FEET 775 000 FEET 780 000 FEET 785 000 FEET 790 000 FEET 795 000 FEET 800 000 FEET 805 000 FEET 810 000 FEET 815 000 FEET 820 000 FEET 825 000 FEET 830 000 FEET 835 000 FEET 840 000 FEET 845 000 FEET 850 000 FEET 855 000 FEET 860 000 FEET 865 000 FEET 870 000 FEET 875 000 FEET 880 000 FEET 885 000 FEET 890 000 FEET 895 000 FEET 900 000 FEET 905 000 FEET 910 000 FEET 915 000 FEET 920 000 FEET 925 000 FEET 930 000 FEET 935 000 FEET 940 000 FEET 945 000 FEET 950 000 FEET 955 000 FEET 960 000 FEET 965 000 FEET 970 000 FEET 975 000 FEET 980 000 FEET 985 000 FEET 990 000 FEET 995 000 FEET 1 000 000 FEET

Mapped, edited, and published by the Geological Survey
Control by USGS, USC&GS, USCE, and Georgia Geodetic Survey
Topography by photogrammetric methods from aerial photographs taken 1966 and 1969, and in part by the Corps of Engineers. Field checked 1971
Polyconic projection. 1927 North American datum
10,000-foot grid based on Georgia coordinate system, west zone
1000-meter Universal Transverse Mercator grid ticks, zone 16, shown in blue
Fine red dashed lines indicate selected fence and field lines where generally visible on aerial photographs. This information is unchecked



ROAD CLASSIFICATION

Primary highway, hard surface	Light-duty road, hard or improved surface
Secondary highway, hard surface	Unimproved road
Interstate Route	U. S. Route
	State Route

THIS MAP COMPLIES WITH NATIONAL MAP ACCURACY STANDARDS
FOR SALE BY U. S. GEOLOGICAL SURVEY, WASHINGTON, D. C. 20242
A FOLDER DESCRIBING TOPOGRAPHIC MAPS AND SYMBOLS IS AVAILABLE ON REQUEST

LINCOLN PARK, GA.
SE/4 THOMASTON 15' QUADRANGLE
N3245-W8415/7.5
1971
AMS 4149 IV SE-SERIES V845

USGS
Historical File
Topographic Division

Handwritten notes: 7/13/73, 2500