

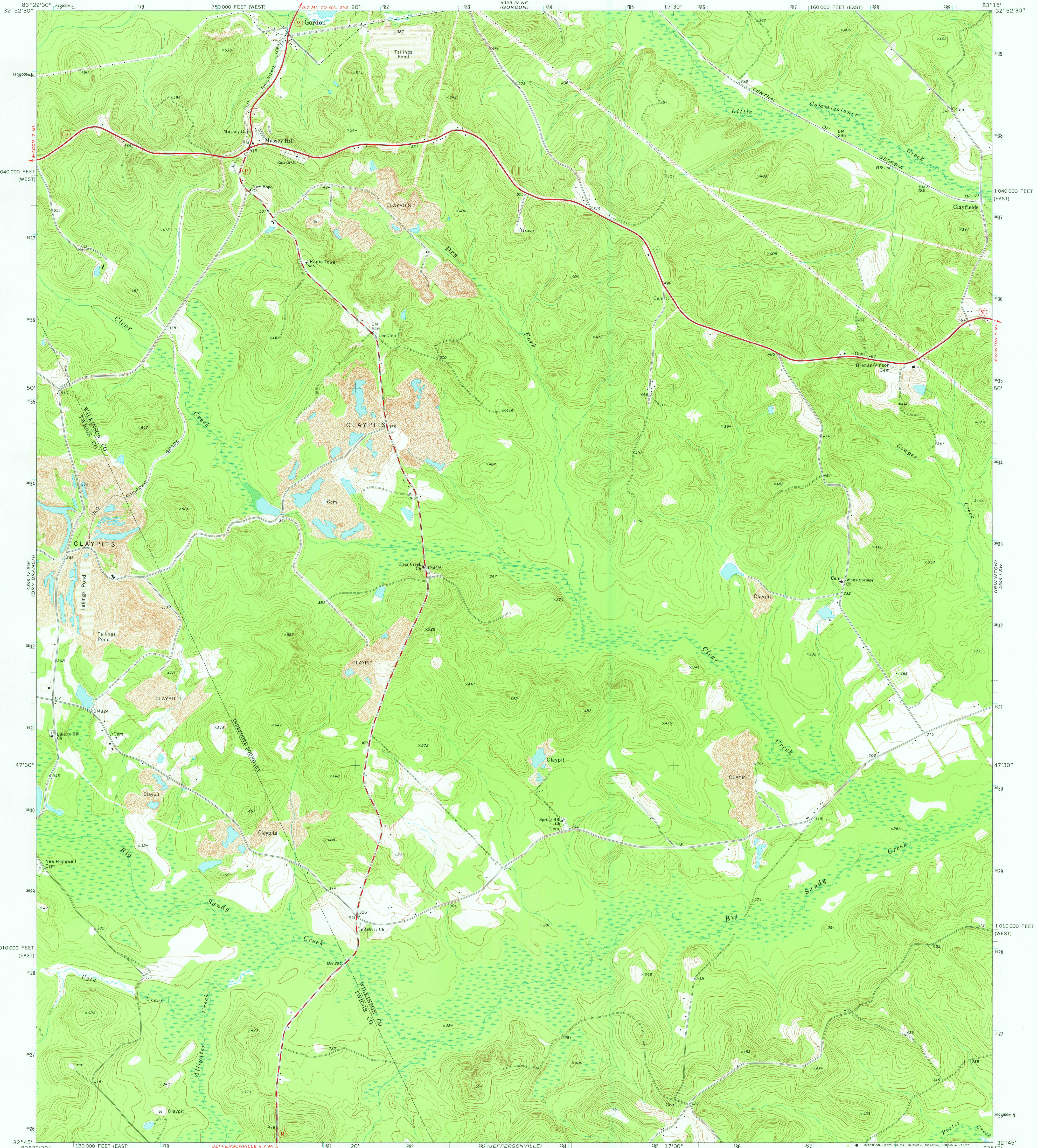
4349 IV NW
(JAMES)

UNITED STATES
DEPARTMENT OF THE INTERIOR
GEOLOGICAL SURVEY

STATE OF GEORGIA
DEPARTMENT OF NATURAL RESOURCES
GEOLOGIC AND WATER RESOURCES DIVISION

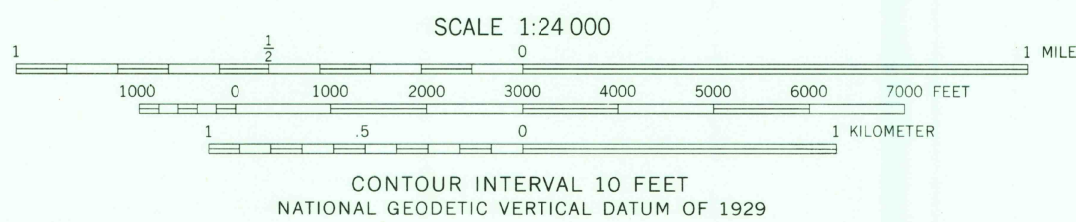
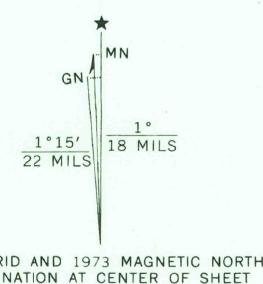
MASSEY HILL QUADRANGLE
GEORGIA
7.5 MINUTE SERIES (TOPOGRAPHIC)

4349 IV NW
(NAPER POND)



4349 IV NW
(JAMES)

Mapped, edited, and published by the Geological Survey
Control by USGS and NOS/NOAA
Topography by photogrammetric methods from aerial
photographs taken 1973. Field checked 1973
Projection: Georgia coordinate system, east zone
(transverse Mercator)
10,000-foot grid ticks based on Georgia coordinate
system, east and west zones
1000-meter Universal Transverse Mercator grid ticks,
zone 17, shown in blue. 1927 North American datum
Fine red dashed lines indicate selected fence and field lines where
generally visible on aerial photographs. This information is unchecked



ROAD CLASSIFICATION
Primary highway, hard surface
Secondary highway, hard surface
Light-duty road, hard or improved surface
Unimproved road
Interstate Route
U. S. Route
State Route
USGS
Historical File
Topographic Division
FEB 08 1978
MASSEY HILL, GA.
SE/4 GORDON 15' QUADRANGLE
N3245-W8315/7.5
1973
AMS 4349 IV SE-SERIES V845

4349 IV NW
(STUCKE LAKE)