

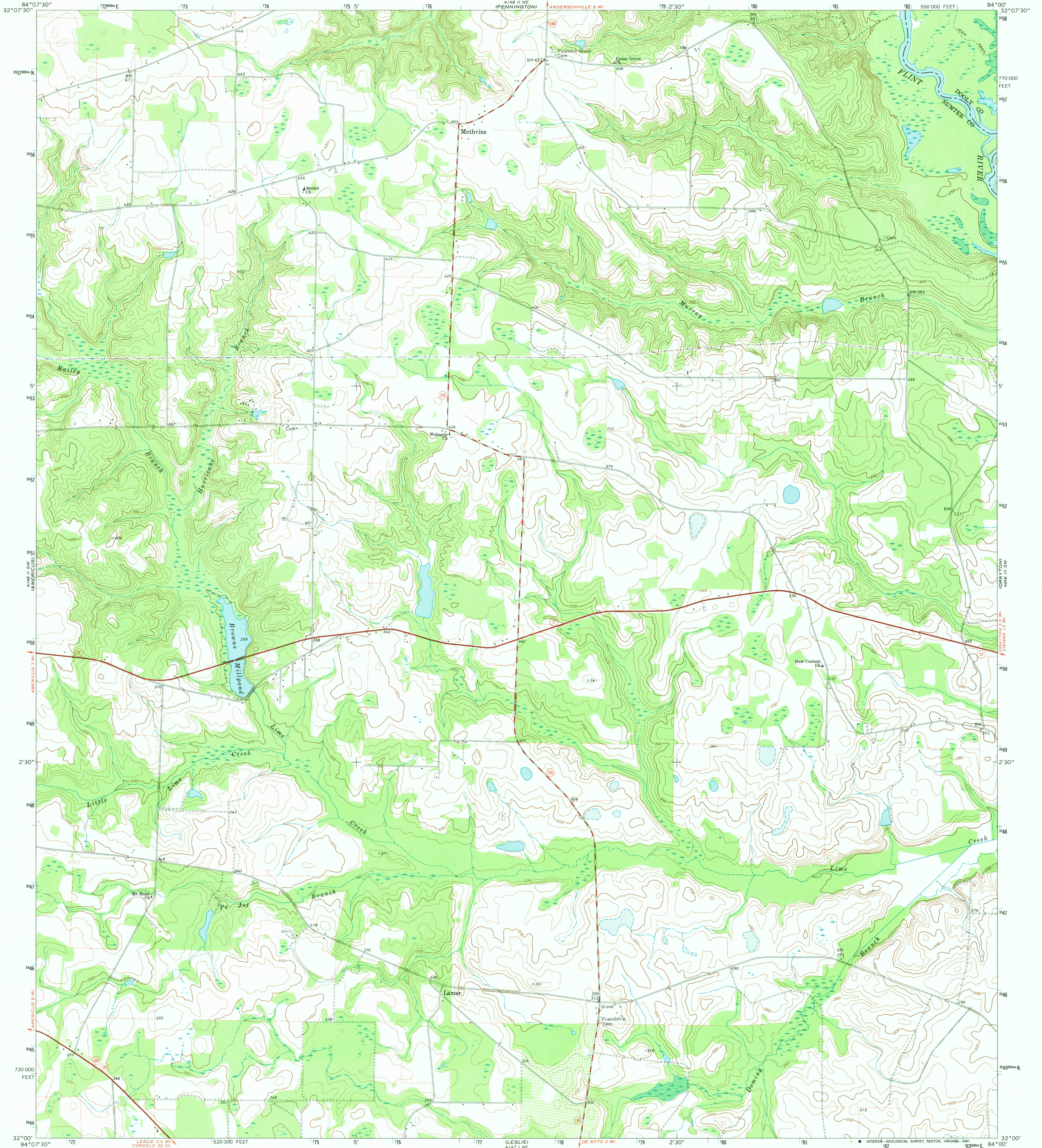
4148 II NW
(ANDERSONVILLE)

UNITED STATES
DEPARTMENT OF THE INTERIOR
GEOLOGICAL SURVEY

STATE OF GEORGIA
DEPARTMENT OF NATURAL RESOURCES
EARTH AND WATER DIVISION

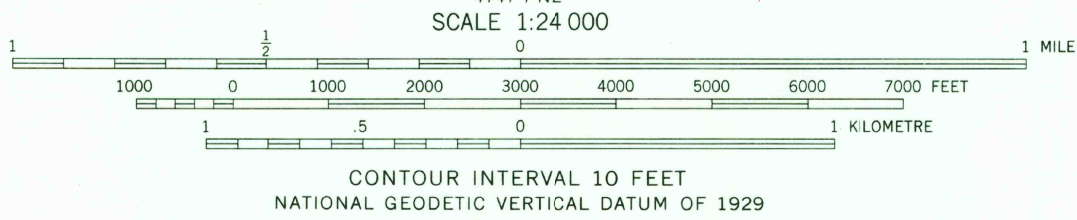
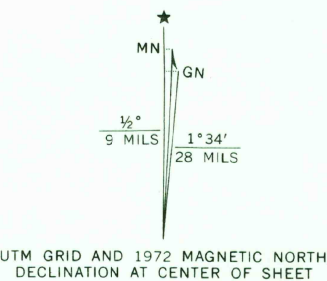
METHVINS QUADRANGLE
GEORGIA
7.5 MINUTE SERIES (TOPOGRAPHIC)

4288 III NW
(BYRONVILLE)



4148 I SW
(AMERICUS)

Mapped, edited, and published by the Geological Survey
Control by USGS, NOS/NOAA, and Georgia Geodetic Survey
Topography by photogrammetric methods from aerial photographs
taken 1972. Field checked 1972
Projection and 10,000-foot grid ticks: Georgia coordinate
system, west zone (transverse Mercator)
1000-metre Universal Transverse Mercator grid ticks,
zone 16, shown in blue. 1927 North American datum
Fine red dashed lines indicate selected fence and field lines where
generally visible on aerial photographs. This information is unchecked
Map photoinspected 1981
No major culture or drainage changes observed



ROAD CLASSIFICATION	
Primary highway, hard surface	Light-duty road, hard or improved surface
Secondary highway, hard surface	Unimproved road
Interstate Route	U.S. Route
	State Route



METHVINS, GA.
N3200—W8400/7.5
1972
PHOTOINSPECTED 1981
AMS 4148 II SE—SERIES V845

THIS MAP COMPLIES WITH NATIONAL MAP ACCURACY STANDARDS
FOR SALE BY U.S. GEOLOGICAL SURVEY
DENVER, COLORADO 80225, OR RESTON, VIRGINIA 22092
A FOLDER DESCRIBING TOPOGRAPHIC MAPS AND SYMBOLS IS AVAILABLE ON REQUEST