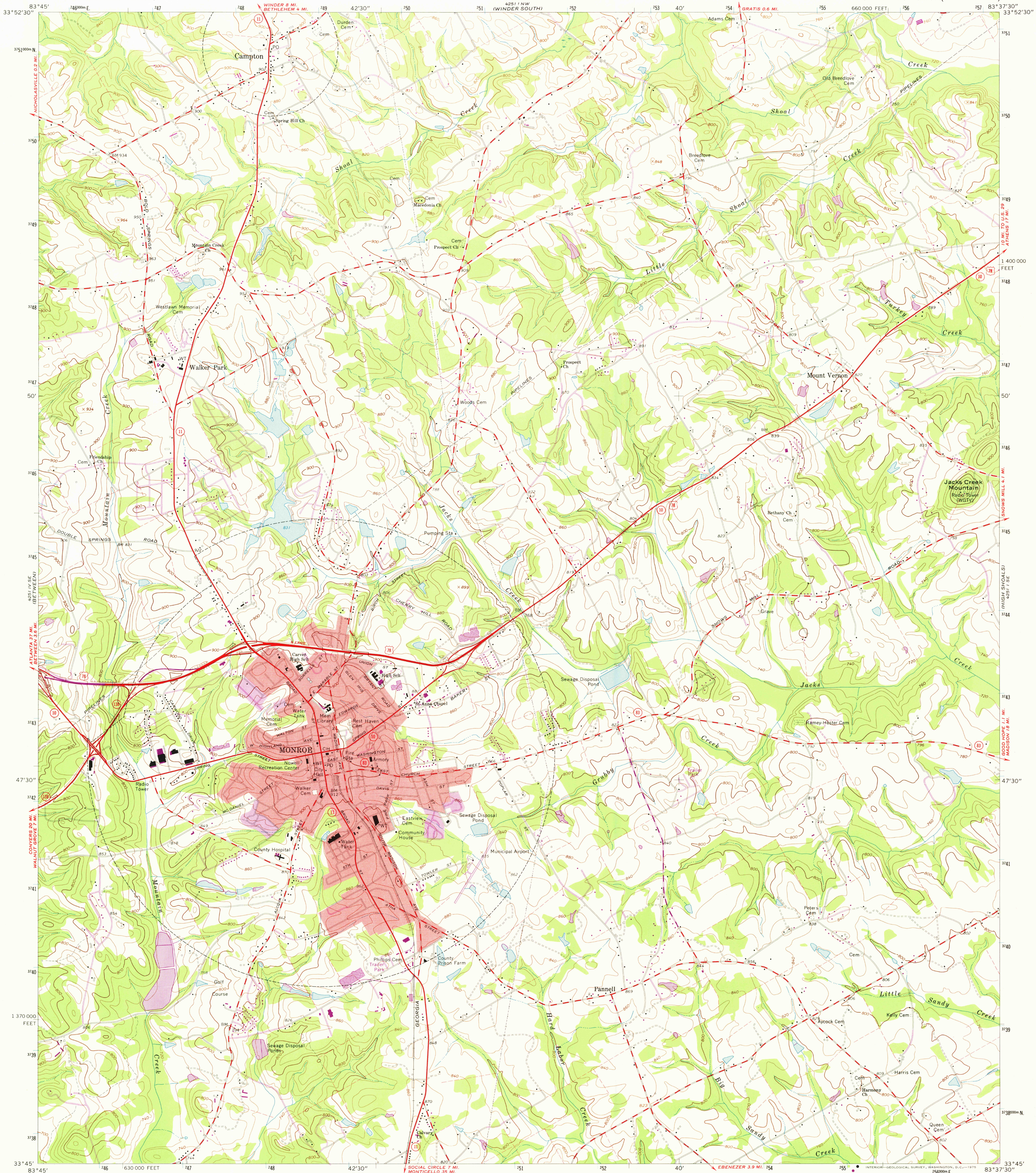
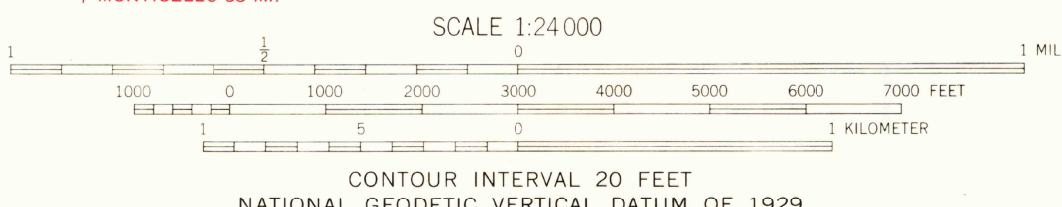
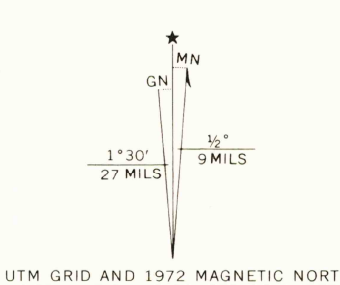


UNITED STATES  
DEPARTMENT OF THE INTERIOR  
GEOLOGICAL SURVEY

MONROE QUADRANGLE  
GEORGIA—WALTON CO.  
7.5 MINUTE SERIES (TOPOGRAPHIC)



Mapped, edited, and published by the Geological Survey  
Control by USGS and USC&GS  
Topography by photogrammetric methods from aerial  
photographs taken 1962. Field checked 1964  
Polyconic projection. 1927 North American datum  
10,000-foot grid based on Georgia coordinate system, west zone  
1000-meter Universal Transverse Mercator grid ticks,  
zone 17, shown in blue  
Fine red dashed lines indicate selected fence and field lines where  
generally visible on aerial photographs. This information is unchecked  
Red tint indicates area in which only landmark buildings are shown  
Revisions shown in purple compiled in cooperation with  
State of Georgia agencies from aerial photographs  
taken 1972. This information not field checked  
Purple tint indicates extension of urban areas



ROAD CLASSIFICATION  
Heavy-duty ——— Light-duty ———  
Medium-duty ——— Unimproved dirt ———  
U.S. Route ——— State Route ———

USGS  
Historical File  
Topographic Division

MONROE, GA.  
N3345—W8337.5/7.5

1964  
PHOTOREVISED 1972  
AMS 4251 I SW—SERIES W845

FEB 10 1975

2570