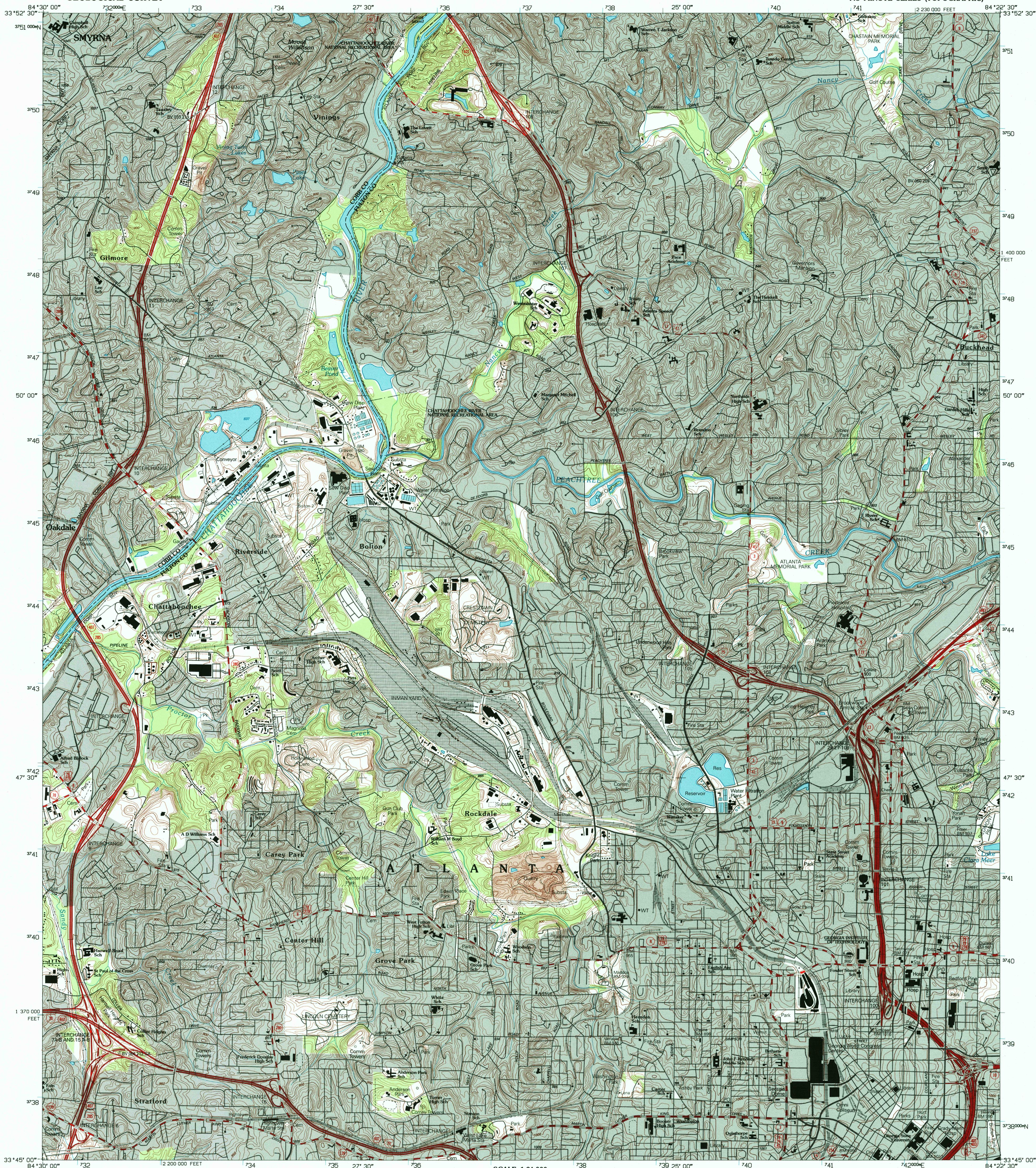
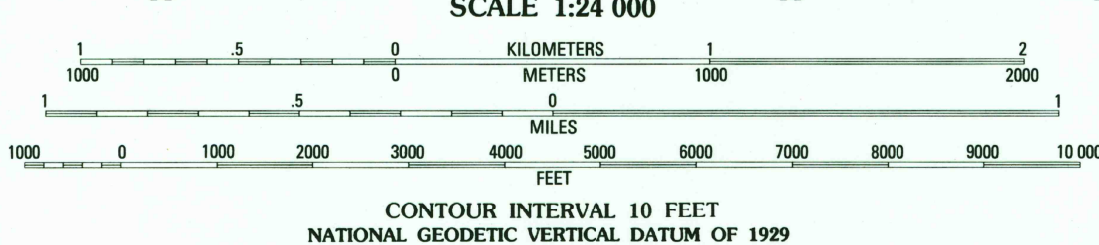
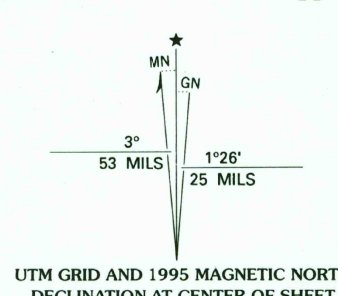


UNITED STATES
DEPARTMENT OF THE INTERIOR
GEOLOGICAL SURVEY

NORTHWEST ATLANTA QUADRANGLE
GEORGIA
7.5 MINUTE SERIES (TOPOGRAPHIC)



Produced by the United States Geological Survey
Compiled from imagery dated 1993 and other sources
Field checked 1991. Map edited 1995
North American Datum of 1983 (NAD 83). Projection and
blue 1000-meter grid ticks: Universal Transverse Mercator, zone 16
10 000-foot ticks: Georgia Coordinate System of 1983 (west zone)
North American Datum of 1927 (NAD 27) is shown by dashed
corner ticks. The values of the shift between NAD 83 and NAD 27
for 7.5-minute intersections are obtainable from National Geodetic
Survey NADCON software
There may be private inholdings within the boundaries of
the National or State reservations shown on this map



QUADRANGLE LOCATION

1	2	3
4	5	6
7	8	9

ADJOINING 7.5' QUADRANGLE NAMES

- 1 Marietta
- 2 Sandy Springs
- 3 Chamblee
- 4 Mableton
- 5 Northeast Atlanta
- 6 Ben Hill
- 7 Southwest Atlanta
- 8 Southeast Atlanta

ROAD CLASSIFICATION

Primary highway, hard surface Light-duty road, hard or improved surface ...

Secondary highway, hard surface Unimproved road ...

Interstate Route U.S. Route State Route

NORTHWEST ATLANTA, GA
33084-G4-TF-024
1993

DMA 4151 IV SW-SERIES V845

RECEIVED
MAR 31 1999

THIS MAP COMPLIES WITH NATIONAL MAP ACCURACY STANDARDS
FOR SALE BY U.S. GEOLOGICAL SURVEY
DENVER, COLORADO 80225, OR RESTON, VIRGINIA 22092
A FOLDER DESCRIBING TOPOGRAPHIC MAPS AND SYMBOLS IS AVAILABLE ON REQUEST

USGS NMD
NATIONAL MAP ARCHIVES

