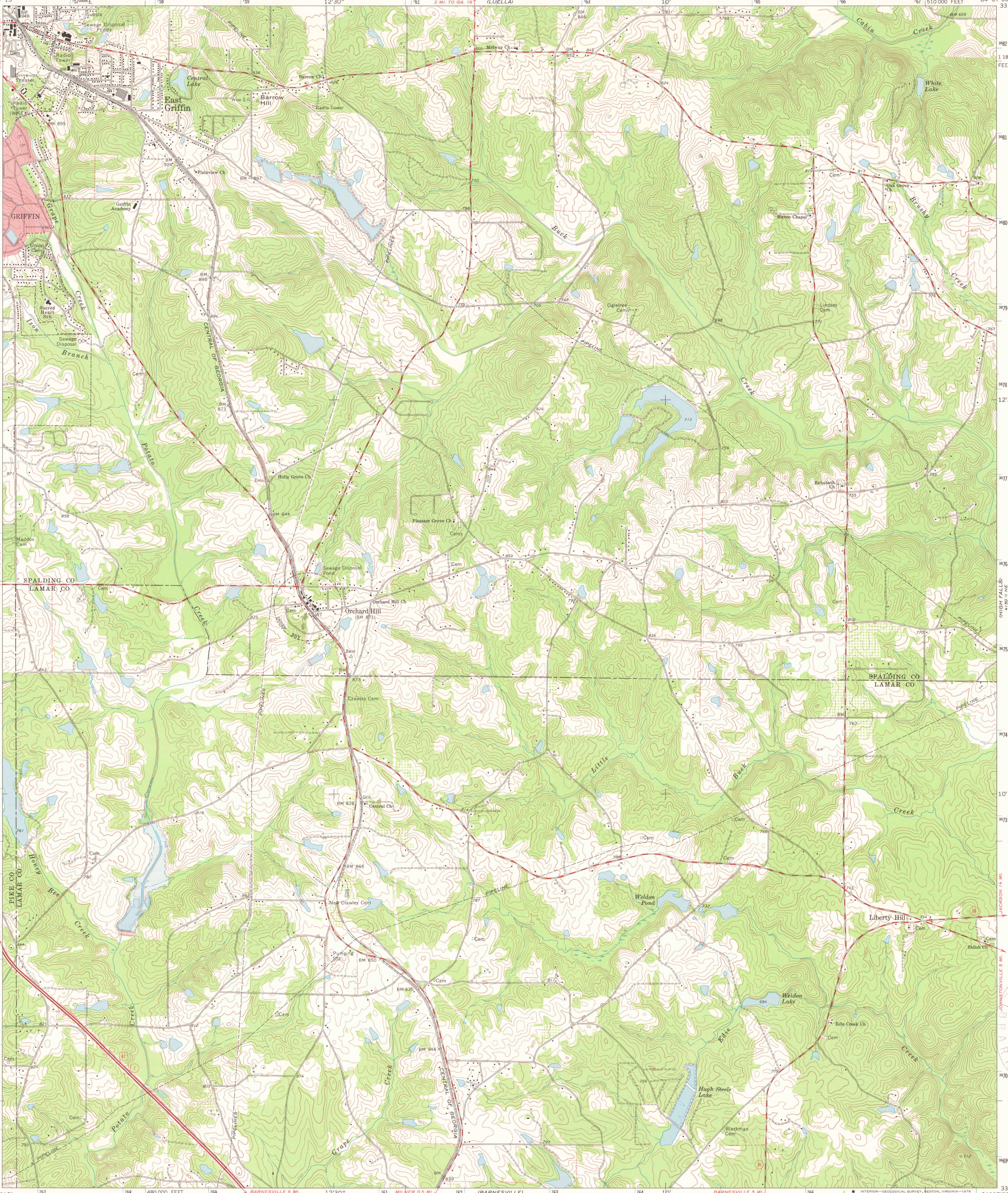


UNITED STATES
DEPARTMENT OF THE INTERIOR
GEOLOGICAL SURVEY

STATE OF GEORGIA
DEPARTMENT OF NATURAL RESOURCES
GEOLOGIC AND WATER RESOURCES DIVISION

ORCHARD HILL QUADRANGLE
GEORGIA
7.5 MINUTE SERIES (TOPOGRAPHIC)
NW/4 BARNESVILLE 15' QUADRANGLE



Mapped, edited, and published by the Geological Survey

Control by USGS, NOS/NOAA, Georgia Geodetic Survey

and Georgia Department of Transportation

Topography by photogrammetric methods from aerial

photographs taken 1973. Field checked 1973

Projection and 10,000-foot grid ticks: Georgia coordinate system

west zone (transverse Mercator)

1000-metre Universal Transverse Mercator grid ticks, zone 16,

shown in blue. 1927 North American datum

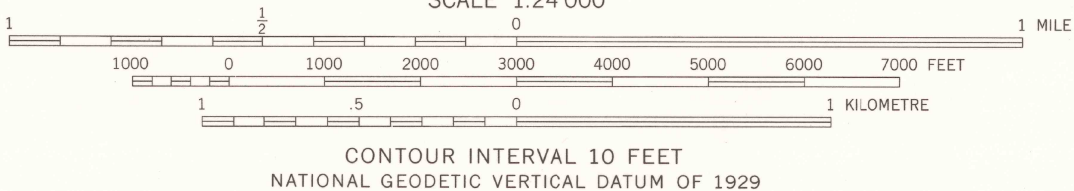
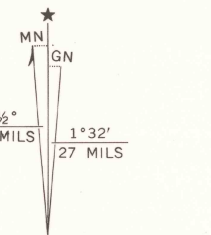
Fine red dashed lines indicate selected fence and field lines where

generally visible on aerial photographs. This information is unchecked

Red tint indicates area in which only landmark buildings are shown

Areas covered by dashed light-blue pattern are subject to

controlled inundation



ROAD CLASSIFICATION	
Primary highway, hard surface	Light-duty road, hard or improved surface
Secondary highway, hard surface	Unimproved road
Interstate Route	U. S. Route
	State Route

ORCHARD HILL, GA.
NW/4 BARNESVILLE 15' QUADRANGLE
N3307.5—W8407.5/7.5

1973

AMS 4150 II NW—SERIES V845