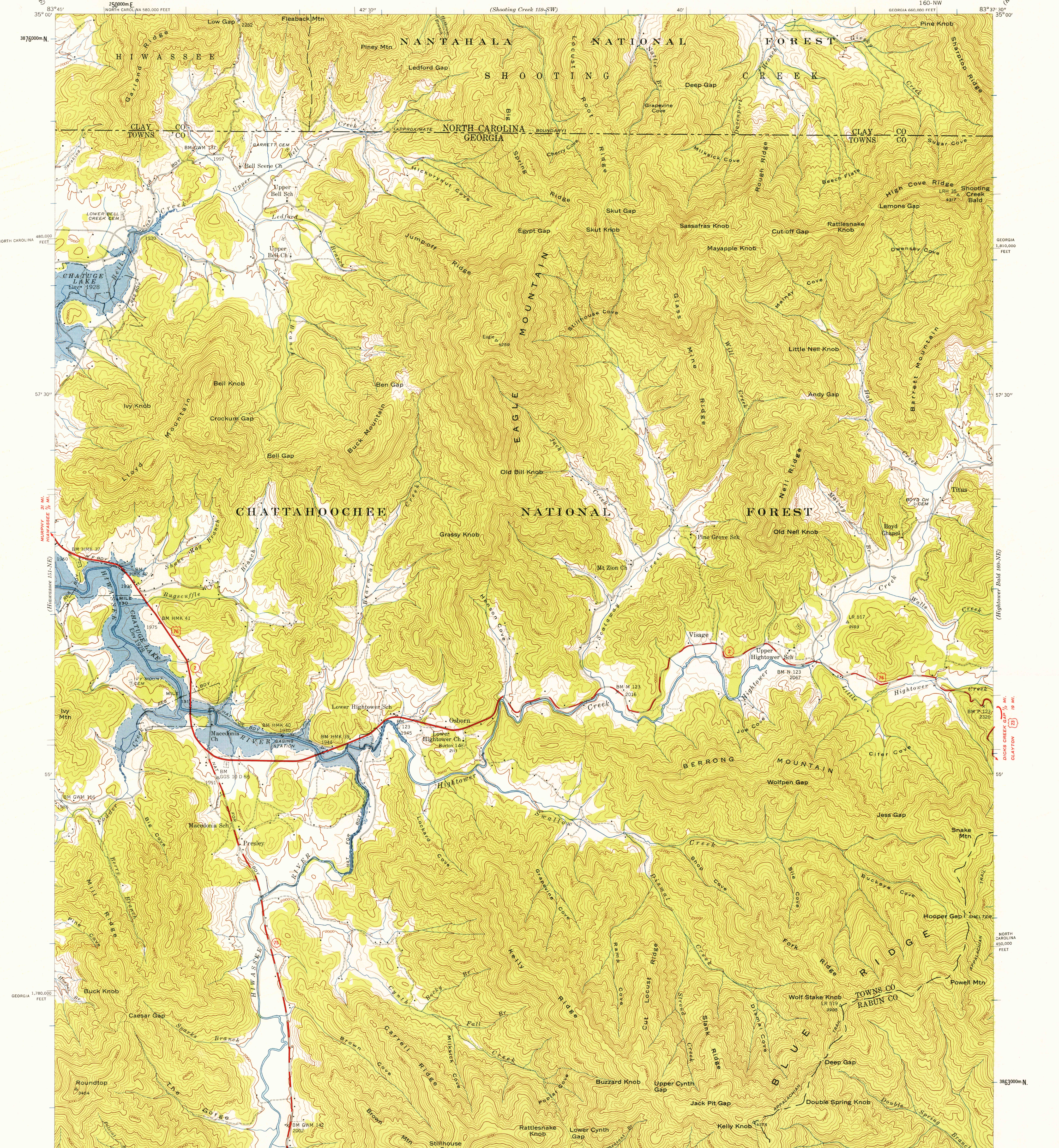


UNITED STATES
DEPARTMENT OF THE INTERIOR
GEOLOGICAL SURVEY

UNITED STATES
TENNESSEE VALLEY AUTHORITY
MAPS AND SURVEYS DIVISION

GEORGIA-NORTH CAROLINA
OSBORN QUADRANGLE
160-NW



Control by USC&GS, USGS, and TVA
Topography by Geological Survey from aerial
photographs by stereophotogrammetric methods
Field examination by Tennessee Valley Authority, 1941

Blue stipple indicates areas submerged by
Chatuge Lake. Pool elevation 1928 feet

APPROXIMATE MEAN
DECLINATION, 1942

UNION GAP
CLEVELAND
7 MI. 42' 30"
129 25 MI.

(Tray Mountain 160-SW)

Scale 24,000

Contour interval 40 feet
Datum is mean sea level

FOR SALE BY U. S. GEOLOGICAL SURVEY, WASHINGTON 25, D. C.
AND U. S. TENNESSEE VALLEY AUTHORITY, CHATTANOOGA OR KNOXVILLE, TENN.
A FOLDER DESCRIBING TOPOGRAPHIC MAPS AND SYMBOLS IS AVAILABLE ON REQUEST

USGS
Historical File
Topographic Division

U.S.G.S.
FILE COPY
TOPOGRAPHIC DIVISION

ROUTES USUALLY TRAVELED
HARD, IMPERVIOUS SURFACES
OTHER SURFACE IMPROVEMENTS
76 U. S. ROUTE 2 STATE ROUTE

OSBORN, GA.-N.C.
160-NW
N3452.5-W8337.5/7.5
1941

Oct - 2 1954

1480