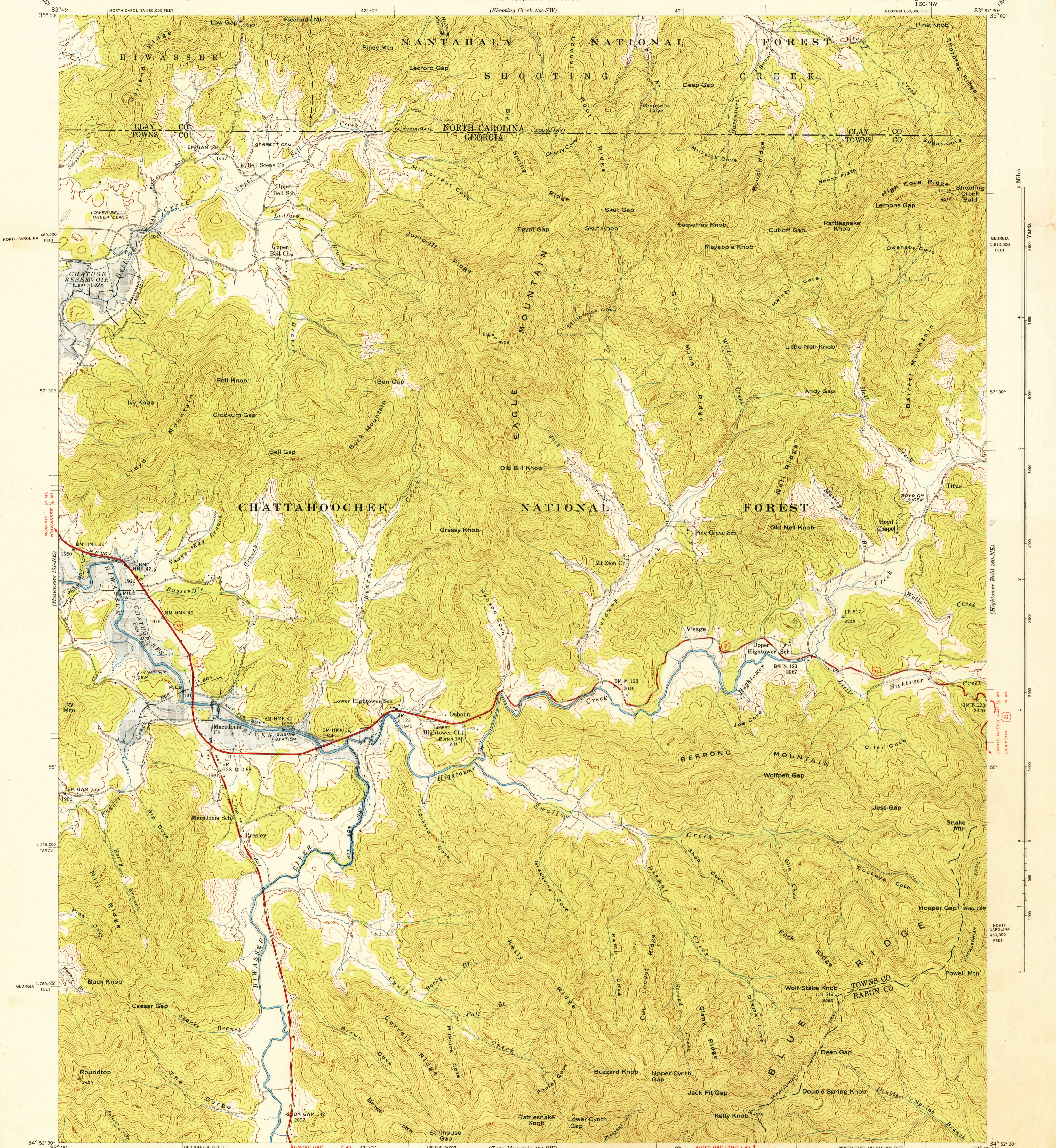


U.S.G.S. FILE COPY

UNITED STATES DEPARTMENT OF THE INTERIOR GEOLOGICAL SURVEY

UNITED STATES TENNESSEE VALLEY AUTHORITY MAPS AND SURVEYS DIVISION

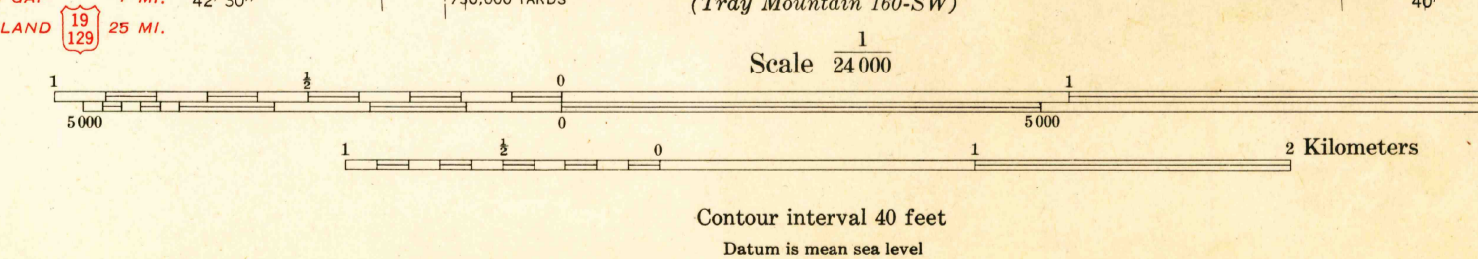
GEORGIA-NORTH CAROLINA OSBORN QUADRANGLE



Control by USC&GS, USGS, and TVA Topography by Geological Survey from aerial photographs by stereophotogrammetric methods Field examination by Tennessee Valley Authority, 1941

Blue stipple indicates areas to be submerged by Chatauge Reservoir. Pool elevation 1928 feet

APPROXIMATE MEAN ECLIPSION, 1942



USGS Topographic Division Historical File Topographic Division

Engined and printed by the Coast and Geodetic Survey Polyconic projection, 1927 North American datum 10,000 foot grid based on Georgia (West) and North Carolina rectangular coordinate systems 5,000 yard grid based on U. S. zone system, B

ROUTES USUALLY TRAVELED HARD, IMPERVIOUS SURFACES OTHER SURFACE IMPROVEMENTS STATE ROUTE

U.S.G.S. FILE COPY

OSBORN, GA.-N.C. 160-NW Edition of 1943 N3452.5-W8337.5/7.5