

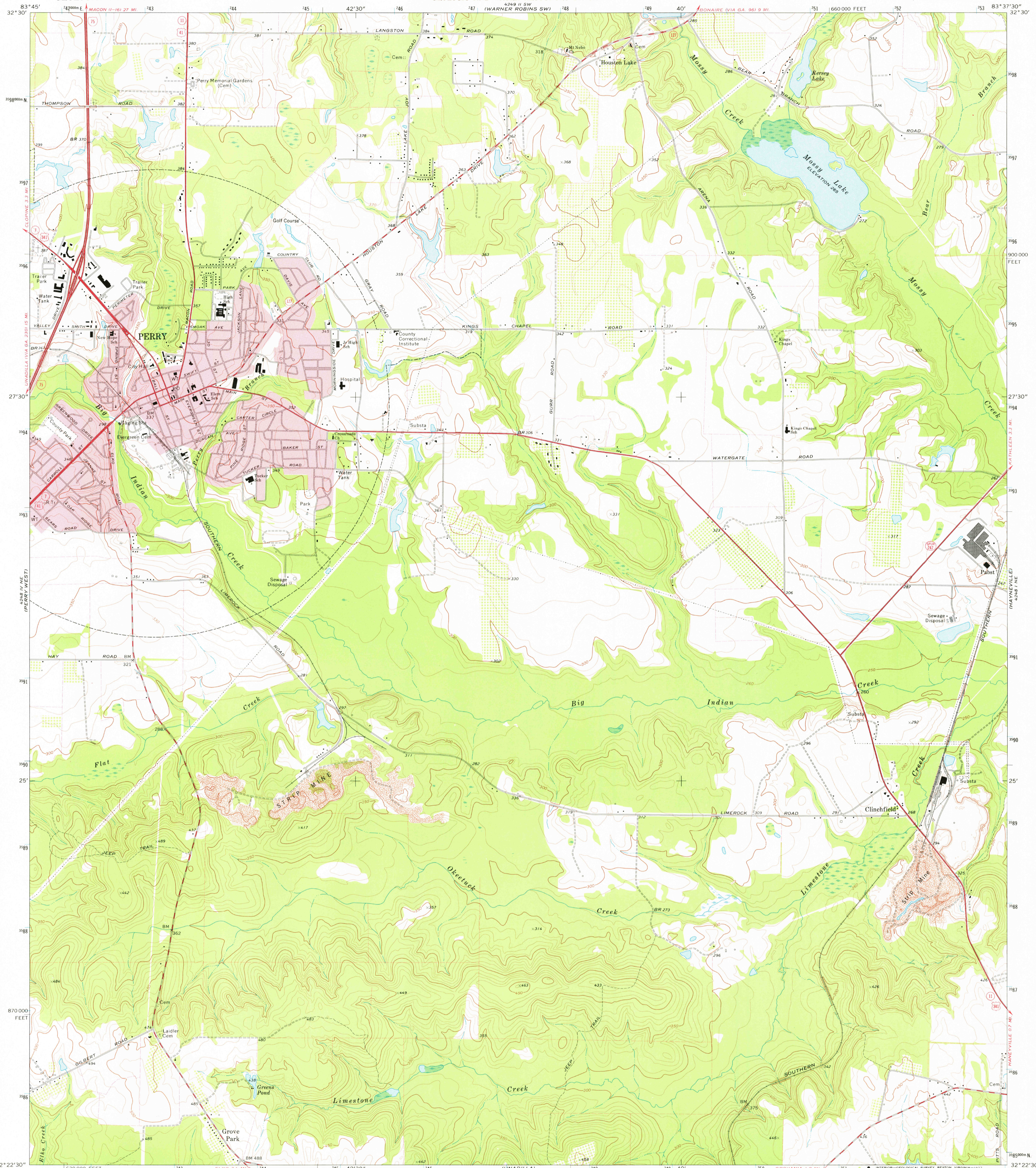
4249 1/2 SE  
(FORT VALLEY  
EAST)

4249 1/2 SE  
(WARNER  
ROBINS SE)

UNITED STATES  
DEPARTMENT OF THE INTERIOR  
GEOLOGICAL SURVEY

STATE OF GEORGIA  
DEPARTMENT OF NATURAL RESOURCES  
GEOLOGIC AND WATER RESOURCES DIVISION

PERRY EAST QUADRANGLE  
GEORGIA-HOUSTON CO.  
7.5 MINUTE SERIES (TOPOGRAPHIC)  
NW/4 PERRY 15 QUADRANGLE



4248 1/2 NE  
(PERRY WEST)

4248 1/2 NE  
(WAYNEVILLE)

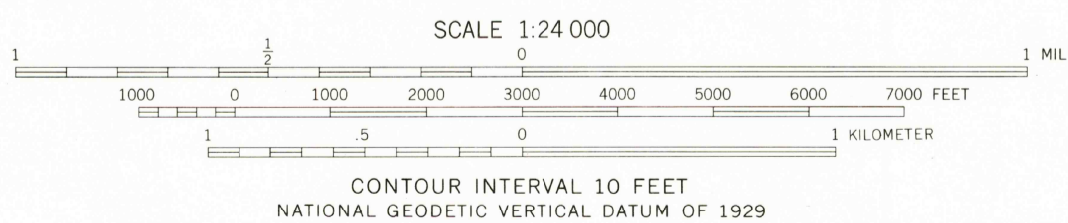
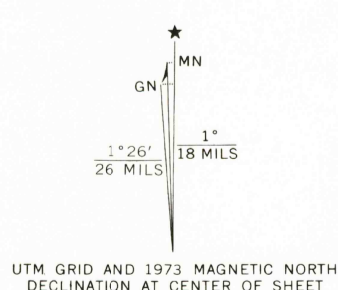
Mapped, edited, and published by the Geological Survey

Control by USGS and NOS/NOAA

Topography by photogrammetric methods from aerial photographs taken 1973. Field checked 1973

Projection and 10,000-foot grid ticks: Georgia coordinate system, west zone (transverse Mercator) 1000-meter Universal Transverse Mercator grid ticks, zone 17, shown in blue. 1927 North American datum

Fine red dashed lines indicate selected fence and field lines where generally visible on aerial photographs. This information is unchecked



ROAD CLASSIFICATION

Primary highway, hard surface	Light-duty road, hard or improved surface
Secondary highway, hard surface	Unimproved road
Interstate Route	U. S. Route
	State Route

PERRY EAST, GA.  
NW/4 PERRY 15 QUADRANGLE  
N3222.5-W8337.5/7.5

AUG 0 1 1977

USGS  
Historical File  
Topographic Division

1973  
AMS 4248 1 NW-SERIES V845

3300

THIS MAP COMPLIES WITH NATIONAL MAP ACCURACY STANDARDS  
FOR SALE BY U. S. GEOLOGICAL SURVEY, RESTON, VIRGINIA 22092  
A FOLDER DESCRIBING TOPOGRAPHIC MAPS AND SYMBOLS IS AVAILABLE ON REQUEST