

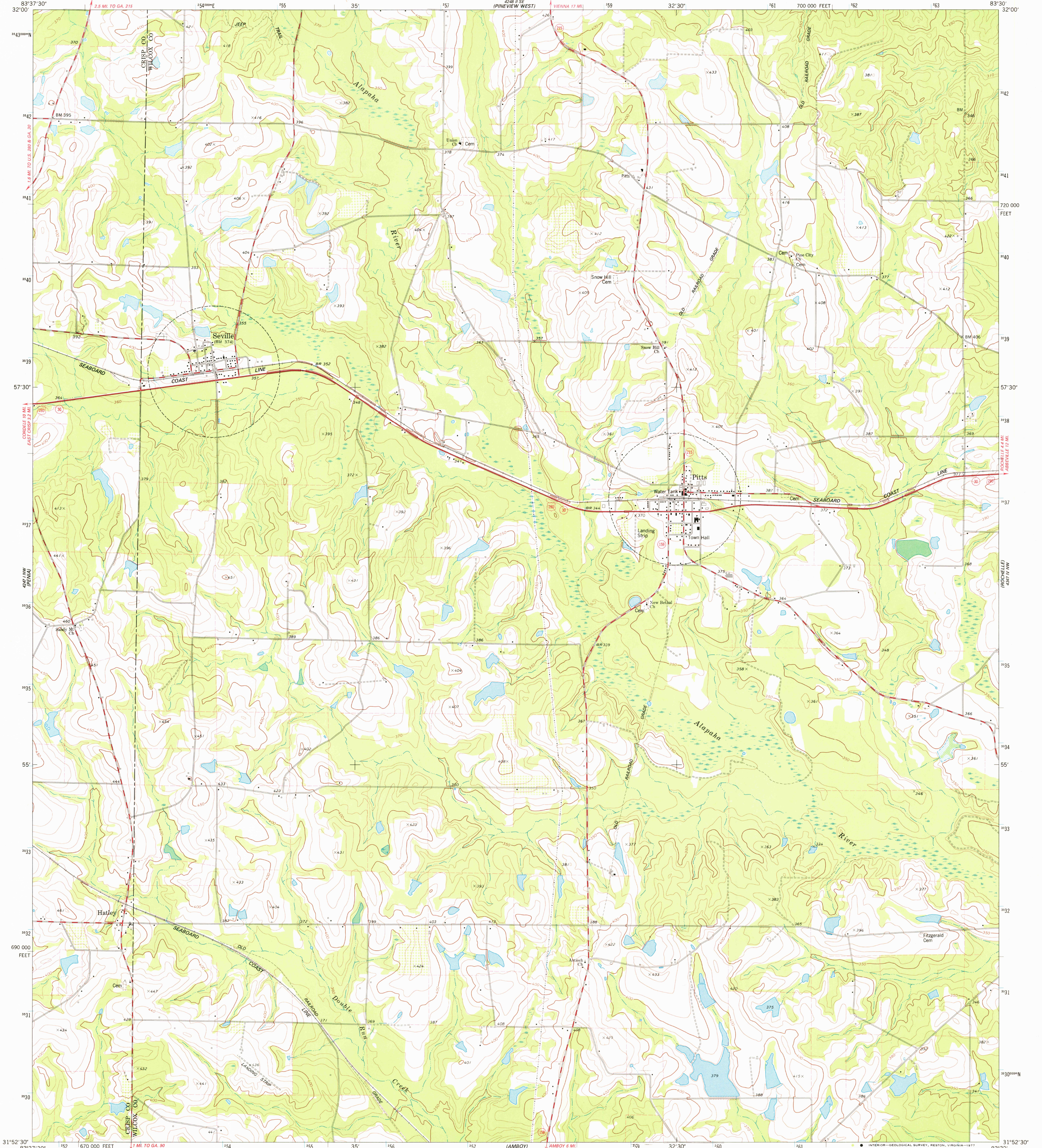
PIKEVIEW SW

UNITED STATES
DEPARTMENT OF THE INTERIOR
GEOLOGICAL SURVEY

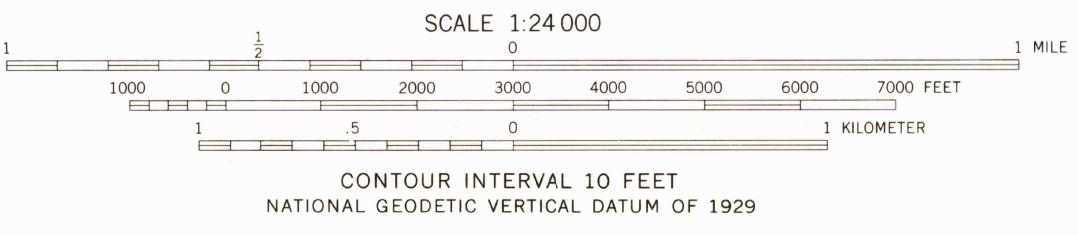
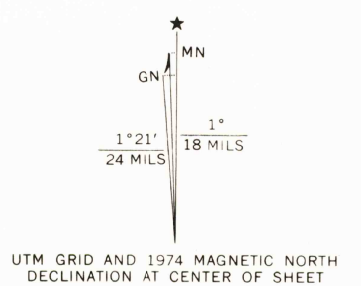
STATE OF GEORGIA
DEPARTMENT OF NATURAL RESOURCES
GEOLOGIC AND WATER RESOURCES DIVISION

PITTS QUADRANGLE
GEORGIA
7.5 MINUTE SERIES (TOPOGRAPHIC)

PIKEVIEW EAST



Mapped, edited, and published by the Geological Survey
Control by USGS, NOS/NOAA, and Georgia Geodetic Survey
Topography by photogrammetric methods from aerial photographs taken 1972. Field checked 1974
Projection and 10,000-foot grid ticks: Georgia coordinate system, west zone (transverse Mercator)
1000-meter Universal Transverse Mercator grid ticks, zone 17, shown in blue. 1927 North American datum
Fine red dashed lines indicate selected fence and field lines where generally visible on aerial photographs. This information is unchecked



ROAD CLASSIFICATION	
Primary highway, hard surface	Light-duty road, hard or improved surface
Secondary highway, hard surface	Unimproved road
Interstate Route	U.S. Route
	State Route

THIS MAP COMPLIES WITH NATIONAL MAP ACCURACY STANDARDS
FOR SALE BY U.S. GEOLOGICAL SURVEY, RESTON, VIRGINIA 22092
A FOLDER DESCRIBING TOPOGRAPHIC MAPS AND SYMBOLS IS AVAILABLE ON REQUEST

USGS Historical File Topographic Division
PITTS, GA. N3152.5-W8330.7.5
AUG 23 1977
1974
AMS 4247 1 NE-SERIES V845

3300