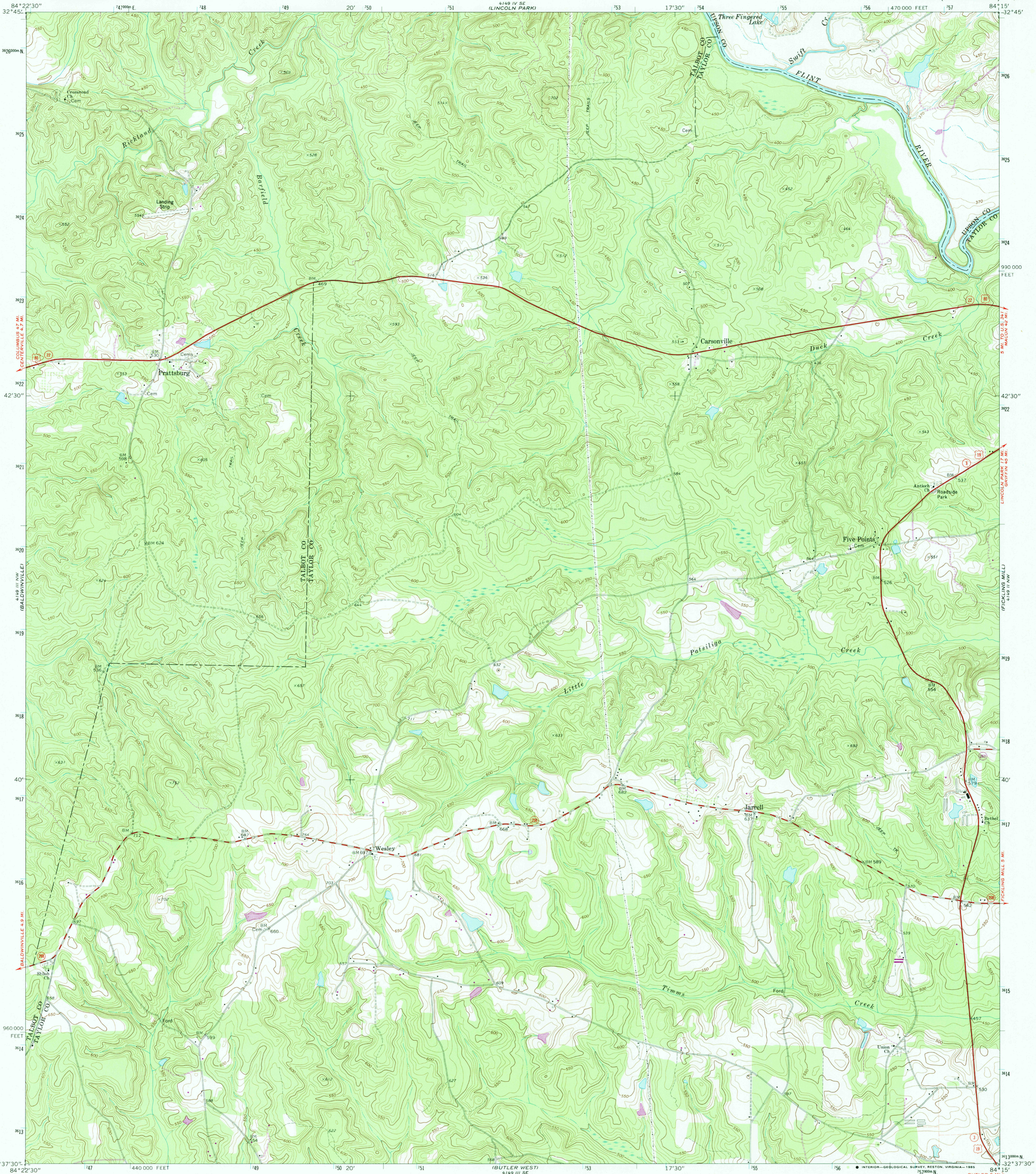
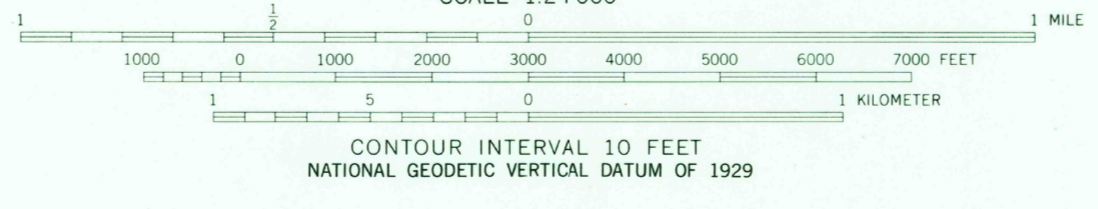
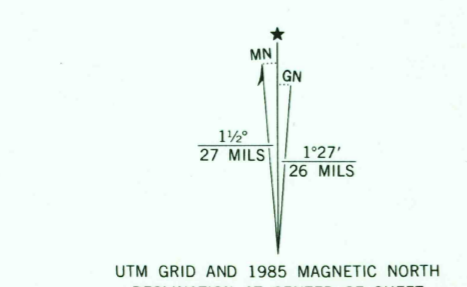


UNITED STATES  
DEPARTMENT OF THE INTERIOR  
GEOLOGICAL SURVEY

PRATTSBURG QUADRANGLE  
GEORGIA  
7.5 MINUTE SERIES (TOPOGRAPHIC)



Mapped, edited, and published by the Geological Survey  
Control by USGS and NOS/NOAA  
Topography by photogrammetric methods from aerial photographs taken 1968. Field checked 1971.  
Projection and 10,000-foot grid ticks: Georgia coordinate system, west zone (transverse Mercator)  
1000-meter Universal Transverse Mercator grid ticks, zone 16, shown in blue  
1927 North American Datum  
To place on the predicted North American Datum 1983 move the projection lines 13 meters south and 8 meters west as shown by dashed corner ticks  
Fine red dashed lines indicate selected fence and field lines where generally visible on aerial photographs. This information is unchecked



THIS MAP COMPLIES WITH NATIONAL MAP ACCURACY STANDARDS FOR SALE BY U.S. GEOLOGICAL SURVEY, RESTON, VIRGINIA, 22092. A FOLDER DESCRIBING TOPOGRAPHIC MAPS AND SYMBOLS IS AVAILABLE ON REQUEST

ROAD CLASSIFICATION

Primary highway, hard surface	Light-duty road, hard or improved surface
Secondary highway, hard surface	Unimproved road
Interstate Route	U. S. Route
	State Route



USGS NMD HISTORICAL MAP  
MAR 28 1986  
REC'D FILE COPY

PRATTSBURG, GA.  
32084-F3-TF-024  
1971  
PHOTOREVISED 1985  
DMA 4149 III NE - SERIES V845

Revisions shown in purple and woodland compiled from aerial photographs taken 1981 and other sources. This information not field checked. Map edited 1985