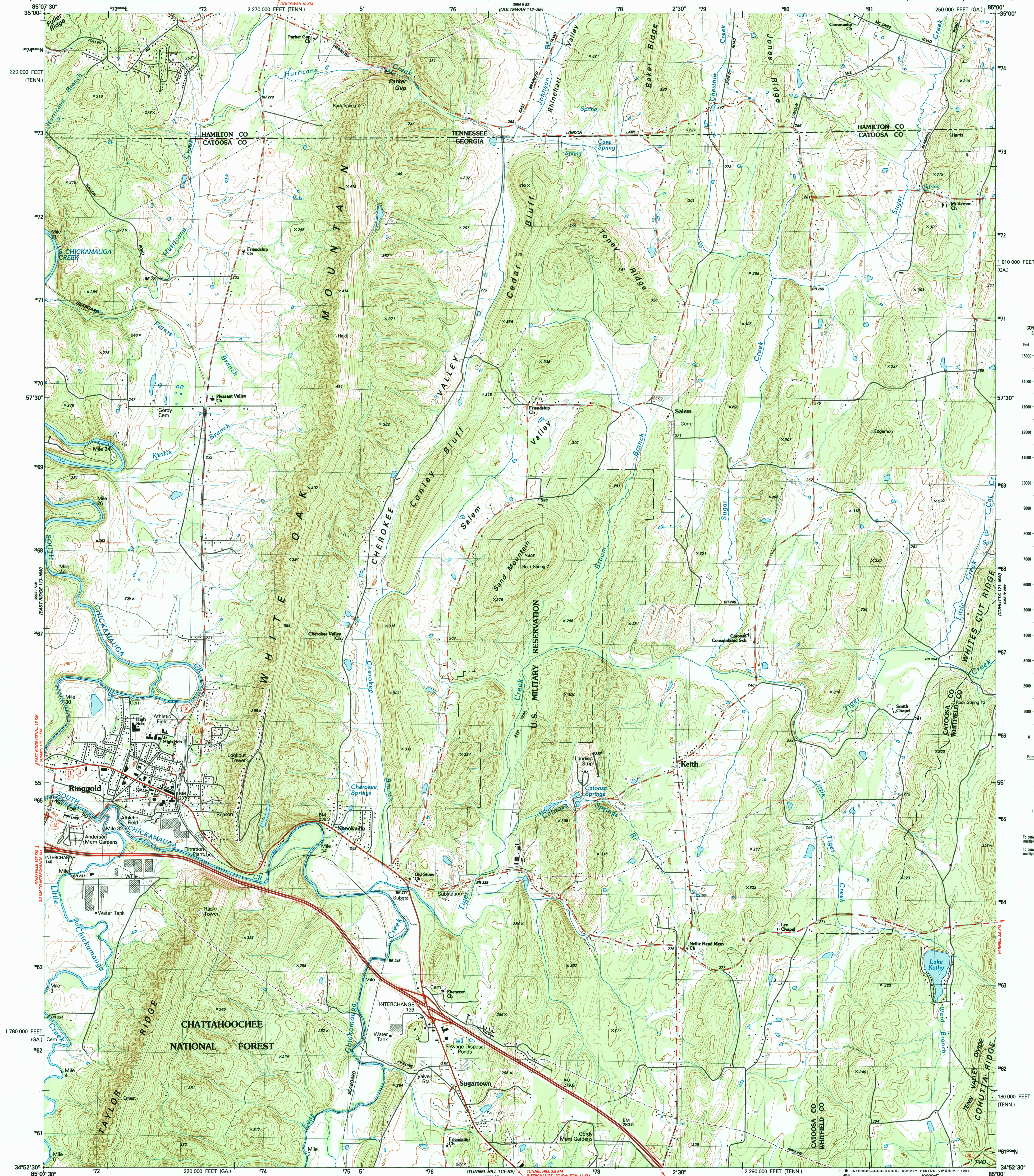


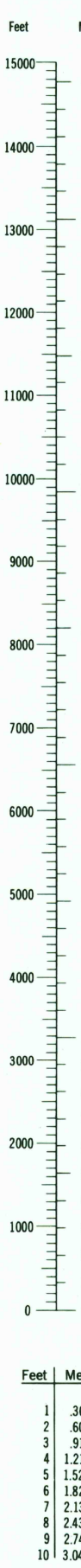
UNITED STATES
DEPARTMENT OF THE INTERIOR
GEOLOGICAL SURVEY

STATE OF GEORGIA
DEPARTMENT OF NATURAL RESOURCES
GEORGIA GEOLOGIC SURVEY

RINGGOLD QUADRANGLE
GEORGIA-TENNESSEE
7.5 MINUTE SERIES (TOPOGRAPHIC) 113-NE



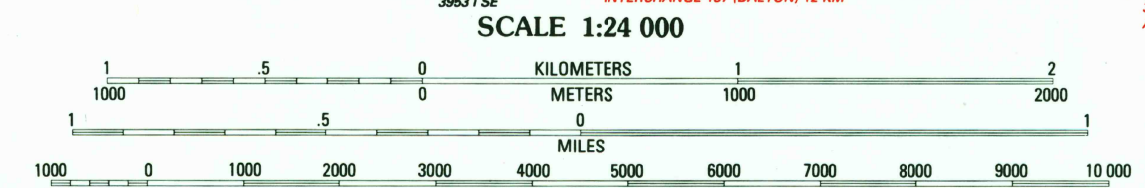
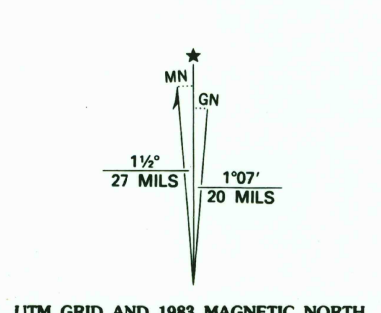
CONVERSION
SCALES



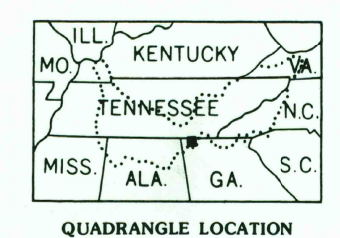
To convert feet to meters
multiply by 3.048

To convert meters to feet
multiply by 3.2808

Produced by the United States Geological Survey
Control by USGS, NOS/NOAA, Tennessee Valley Authority, and
Georgia Geodetic Survey
Compiled by photogrammetric methods from aerial photographs
taken 1975. Field checked 1975. Map edited 1983
Supersedes USGS-TVA map dated 1946
Projection: Georgia coordinate system, west zone (transverse
Mercator). 10,000-foot grid ticks based on Georgia coordinate
system, west zone, and Tennessee coordinate system
1000-meter Universal Transverse Mercator grid, zone 16
1927 North American Datum. To place on the predicted North
American Datum 1983 move the projection lines 5 meters south
and 3 meters west as shown by dashed corner ticks
Fine red dashed lines indicate selected fence and field lines where
generally visible on aerial photographs. This information is unchecked
There may be private inholdings within the boundaries of
the National or State reservations shown on this map



CONTOUR INTERVAL 5 METERS
NATIONAL GEODETIC VERTICAL DATUM OF 1929
CONTROL ELEVATIONS SHOWN TO THE NEAREST 0.1 METER
OTHER ELEVATIONS SHOWN TO THE NEAREST METER
THIS MAP COMPLIES WITH NATIONAL MAP ACCURACY STANDARDS
FOR SALE BY U.S. GEOLOGICAL SURVEY, RESTON, VIRGINIA 22092,
TENNESSEE DEPARTMENT OF CONSERVATION, DIVISION OF GEOLOGY, NASHVILLE, TENN. 37219,
AND U.S. TENNESSEE VALLEY AUTHORITY, CHATTANOOGA, TENN. 37401, OR KNOXVILLE, TENN. 37902
A FOLDER DESCRIBING TOPOGRAPHIC MAPS AND SYMBOLS IS AVAILABLE ON REQUEST



CONTOURS AND ELEVATIONS
IN METERS

ROAD CLASSIFICATION
Primary highway, hard surface Light-duty road, hard or improved surface
Secondary highway, hard surface Unimproved road
Interstate Route U.S. Route State Route

USGS AND HISTORICAL
MAP ARCHIVES
FEB 27 1995
REC'D FILE COPY

RINGGOLD, GA.-TENN.
34085-H1-TM-024
1983
DMA 3953 1 NE-SERIES V845