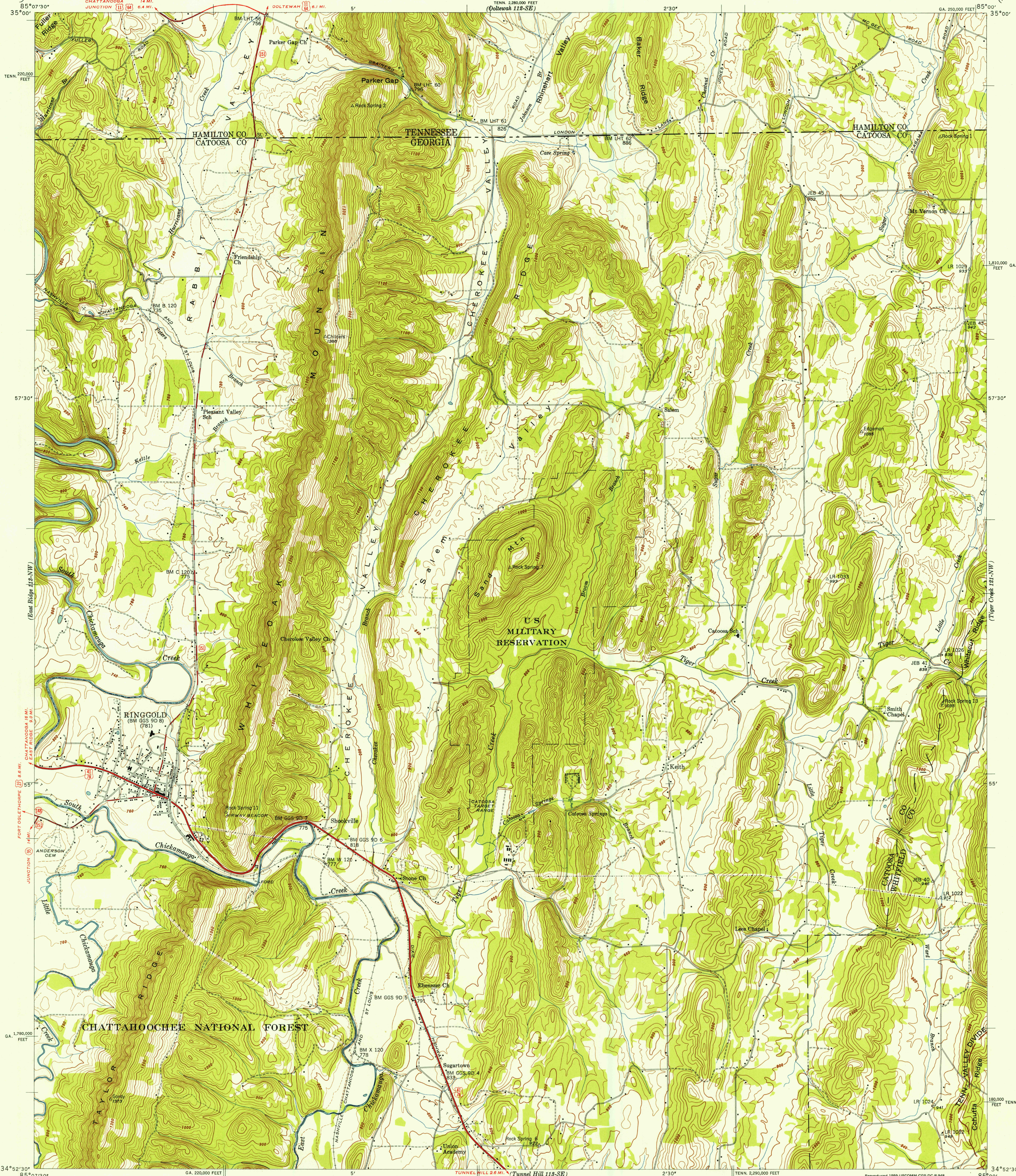


UNITED STATES
DEPARTMENT OF THE INTERIOR
GEOLOGICAL SURVEY

UNITED STATES
TENNESSEE VALLEY AUTHORITY
MAPS AND SURVEYS DIVISION

GEORGIA-TENNESSEE
RINGGOLD QUADRANGLE
113-NE



Control by US&GS, USGS, GGS, and TVA
Topography by USGS and TVA from aerial
photographs by stereophotogrammetric methods
Field examination by Tennessee Valley Authority, 1946

TRUE NORTH
MAGNETIC NORTH
APPROXIMATE MEAN
DECLINATION, 1946

Scale 24,000
5000 0 5000 10000 Feet
1 2 Kilometers

Contour interval 20 feet
Occasional 10 foot contours shown by broken lines
Datum is mean sea level

FOR SALE BY U. S. GEOLOGICAL SURVEY, WASHINGTON 25, D. C.
AND U. S. TENNESSEE VALLEY AUTHORITY, CHATTANOOGA OR KNOXVILLE, TENN.
A FOLDER DESCRIBING TOPOGRAPHIC MAPS AND SYMBOLS IS AVAILABLE ON REQUEST

U.S.G.S.
FILE COPY
TOPOGRAPHIC DIVISION
USGS
Historical File
Topographic Division

Polyconic projection, 1927 North American datum
10,000 foot grid based on Georgia (West) and
Tennessee rectangular coordinate systems

ROUTES USUALLY TRAVELED
HARD, IMPERVIOUS SURFACES
OTHER SURFACE IMPROVEMENTS
(4) U. S. ROUTE (18) STATE ROUTE

RINGGOLD, GA.-TENN.
113-NE
N3452.5-W8500.7.5
1946

MAR - 6 1959
1000