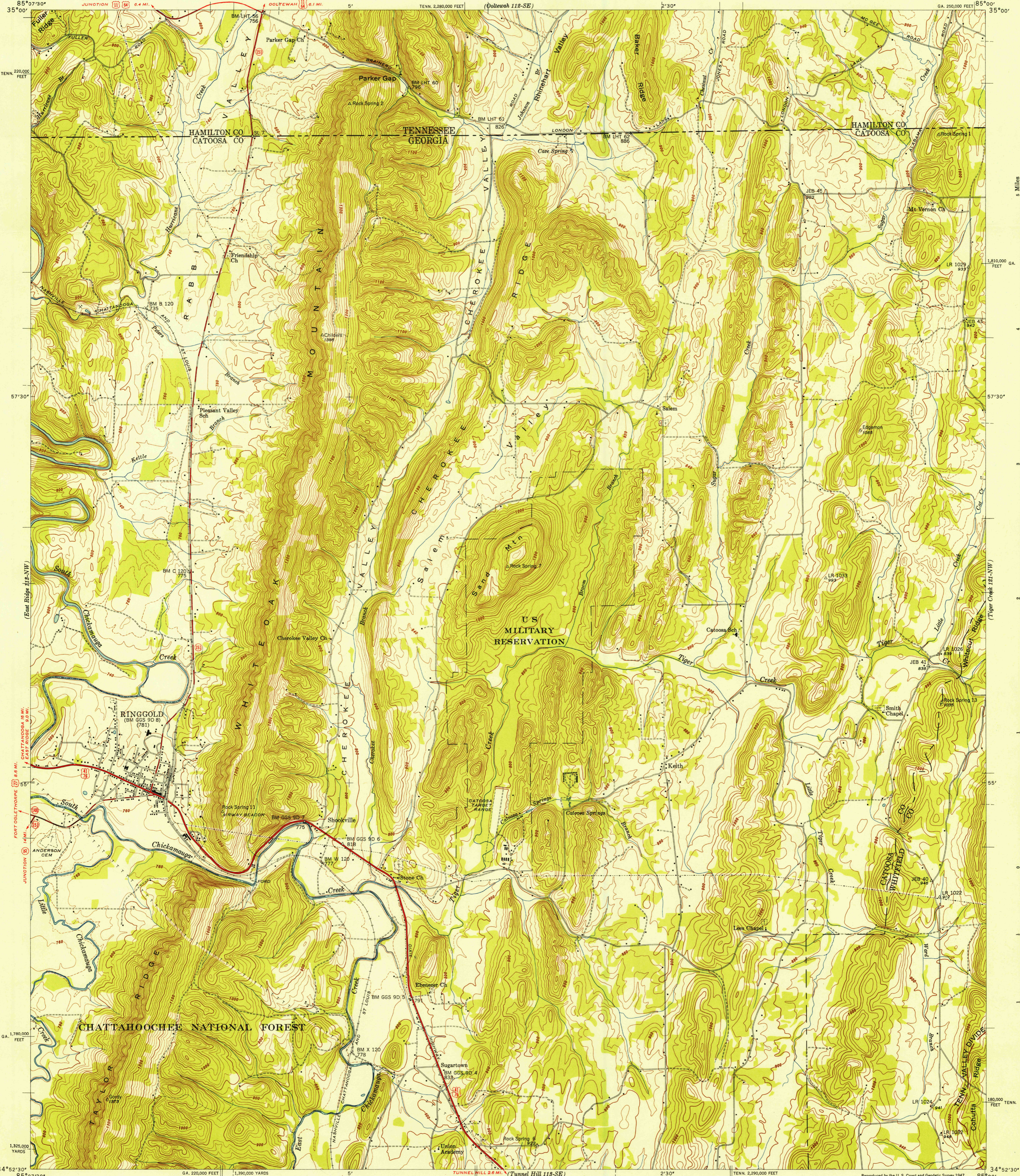


U. S. G. S.
FILE COPY
Inspection and Editing.

UNITED STATES
DEPARTMENT OF THE INTERIOR
GEOLOGICAL SURVEY

UNITED STATES
TENNESSEE VALLEY AUTHORITY
MAPS AND SURVEYS DIVISION

GEORGIA-TENNESSEE
RINGGOLD QUADRANGLE
113-NE

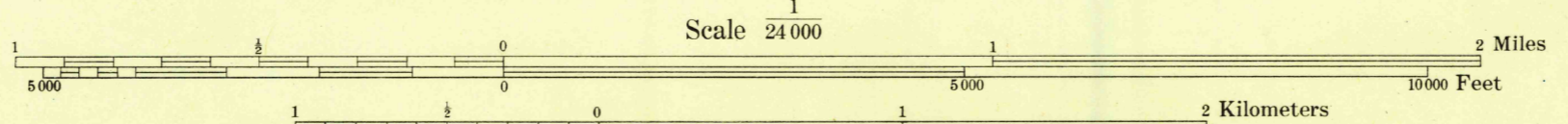


(East Chattanooga 112-SW)
85°07'30"
35°00'
TENN. 2,280,000 FEET
57°30'
(East Ridge 113-NW)
55°
PORT DOLETHORPE 114 MI. 8.8 MI. EAST RIDGE 9.0 MI.
JUNCTION 114 MI. 1.4 MI. EAST RIDGE 9.0 MI.
ANDERSON CEM.
1,780,000 FEET
1,325,000 YARDS
34°52'30"
85°07'30"

(McDonna 112-SW)
85°00'
35°00'
GA. 250,000 FEET
57°30'
1,810,000 FEET GA.
5 Miles
8000 YARDS
6000
4000
3000
2000
1000
0
180,000 FEET TENN.
34°52'30"
(Dalton 112-SW)

Control by USC&GS, USGS, GGS, and TVA
Topography by USGS and TVA from aerial
photographs by stereophotogrammetric methods
Field examination by Tennessee Valley Authority, 1946
Maps distributed by the Geological Survey

TRUE NORTH
MAGNETIC NORTH
APPROXIMATE MEAN
DECLINATION, 1946



Scale 24 000
Contours interval 20 feet
Occasional 10 foot contours shown by broken lines
Datum is mean sea level

USGS
Historical File
Topographic Division

Polyconic projection, 1927 North American datum
10,000 foot grid based on Georgia (West) and
Tennessee rectangular coordinate systems
5,000 yard grid based on U. S. zone system, C
ROUTES USUALLY TRAVELED
HARD, IMPERVIOUS SURFACES
OTHER SURFACE IMPROVEMENTS
U. S. ROUTE STATE ROUTE

RINGGOLD, GA.-TENN.
113-NE
Edition of 1946
N3452.5-W85007.5

U. S. G. S.
FILE COPY