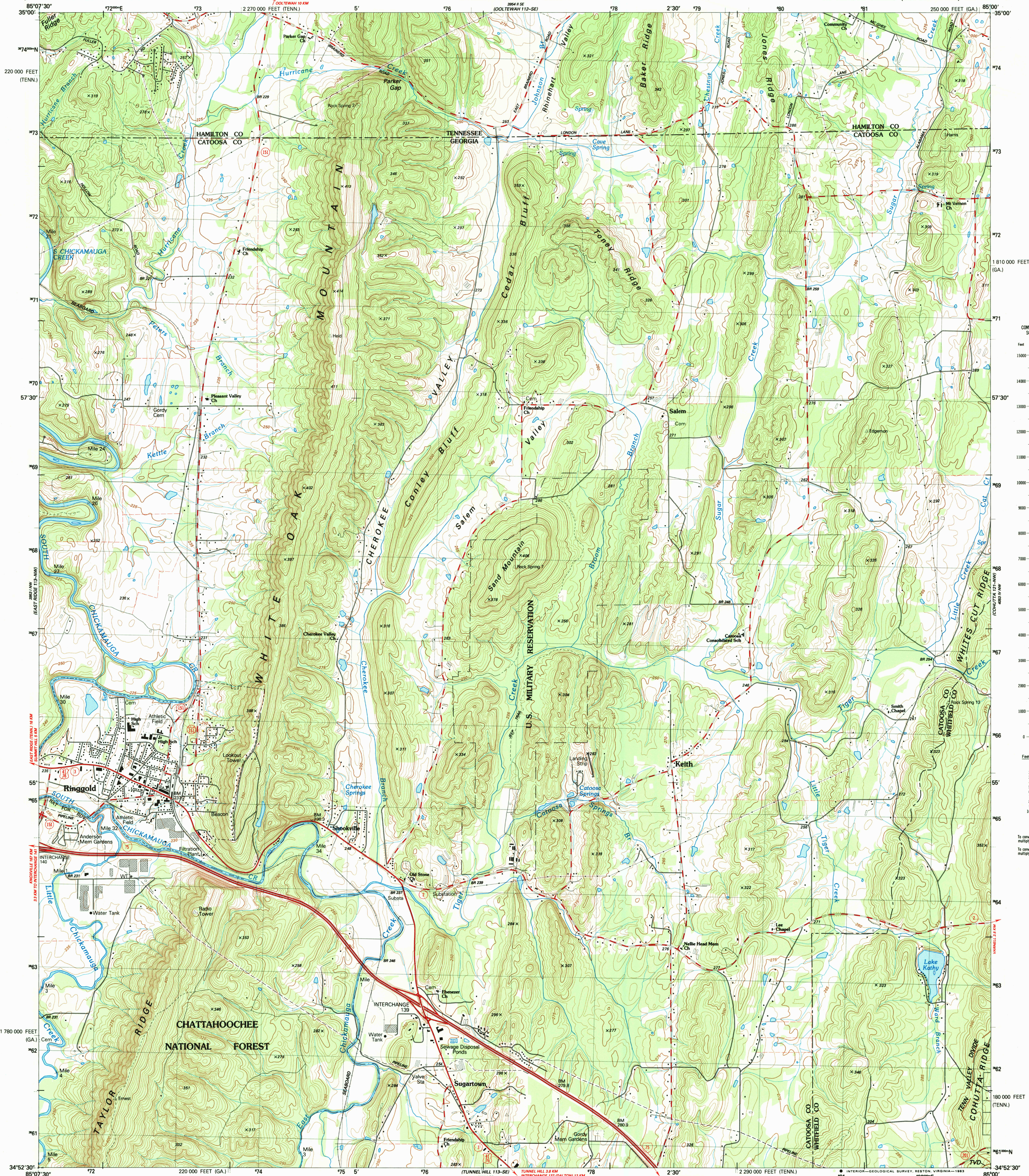


UNITED STATES  
DEPARTMENT OF THE INTERIOR  
GEOLOGICAL SURVEY

STATE OF GEORGIA  
DEPARTMENT OF NATURAL RESOURCES  
GEORGIA GEOLOGIC SURVEY

RINGGOLD QUADRANGLE  
GEORGIA—TENNESSEE  
7.5 MINUTE SERIES (TOPOGRAPHIC) 113-NE



CONVERSION  
SCALES

Feet Meters

15000 4500

14000 4000

13000 3500

12000 3000

11000 2500

10000 2000

9000 1500

8000 1000

7000 500

6000 0

5000 0

4000 0

3000 0

2000 0

1000 0

0 0

0 0

0 0

0 0

0 0

0 0

0 0

0 0

0 0

0 0

0 0

0 0

0 0

0 0

0 0

0 0

0 0

0 0

0 0

0 0

0 0

0 0

0 0

0 0

0 0

0 0

0 0

0 0

0 0

0 0

0 0

0 0

0 0

0 0

0 0

0 0

0 0

0 0

0 0

0 0

0 0

0 0

0 0

0 0

0 0

0 0

0 0

0 0

0 0

0 0

0 0

0 0

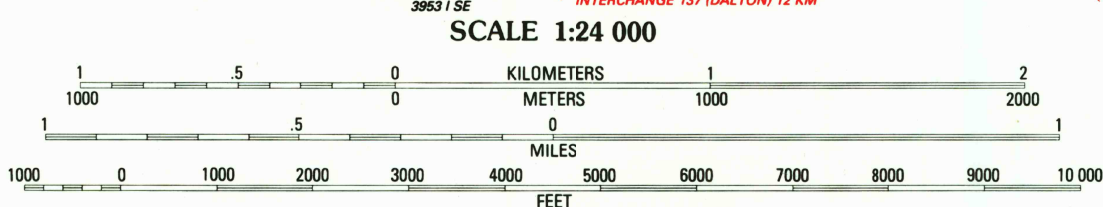
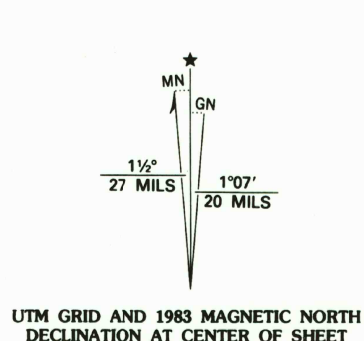
0 0

0 0

0 0

0 0

Produced by the United States Geological Survey  
Control by USGS, NOS/NOAA, Tennessee Valley Authority, and  
Georgia Geodetic Survey  
Compiled by photogrammetric methods from aerial photographs  
taken 1975. Field checked 1975. Map edited 1983  
Supersedes USGS-TVA map dated 1946  
Projection: Georgia coordinate system, west zone (transverse  
Mercator). 10,000-foot grid ticks based on Georgia coordinate  
system, west zone, and Tennessee coordinate system  
1000-meter Universal Transverse Mercator grid, zone 16  
1927 North American Datum. To place on the predicted North  
American Datum 1983 move the projection lines 5 meters south  
and 3 meters west as shown by dashed corner ticks  
Fine red dashed lines indicate selected fence and field lines where  
generally visible on aerial photographs. This information is unchecked  
There may be private inholdings within the boundaries of  
the National or State reservations shown on this map



CONTOUR INTERVAL 5 METERS  
NATIONAL GEODETIC VERTICAL DATUM OF 1929  
CONTROL ELEVATIONS SHOWN TO THE NEAREST 0.1 METER  
OTHER ELEVATIONS SHOWN TO THE NEAREST METER  
THIS MAP COMPLIES WITH NATIONAL MAP ACCURACY STANDARDS  
FOR SALE BY U. S. GEOLOGICAL SURVEY, RESTON, VIRGINIA 22092.  
TENNESSEE DEPARTMENT OF CONSERVATION, DIVISION OF GEOLOGY, NASHVILLE, TENN. 37219,  
AND U. S. TENNESSEE VALLEY AUTHORITY, CHATTANOOGA, TENN. 37401, OR KNOXVILLE, TENN. 37902  
A FOLDER DESCRIBING TOPOGRAPHIC MAPS AND SYMBOLS IS AVAILABLE ON REQUEST



CONTOURS AND ELEVATIONS  
IN METERS

ROAD CLASSIFICATION (TVA 113-NE)  
Primary highway, hard surface ..... Light-duty road, hard or improved surface .....  
Secondary highway, hard surface ..... Unimproved road .....  
Interstate Route U. S. Route State Route

RINGGOLD, GA.—TENN.  
34085-H1-TM-024

1983

DMA 3953 1 NE—SERIES V845