

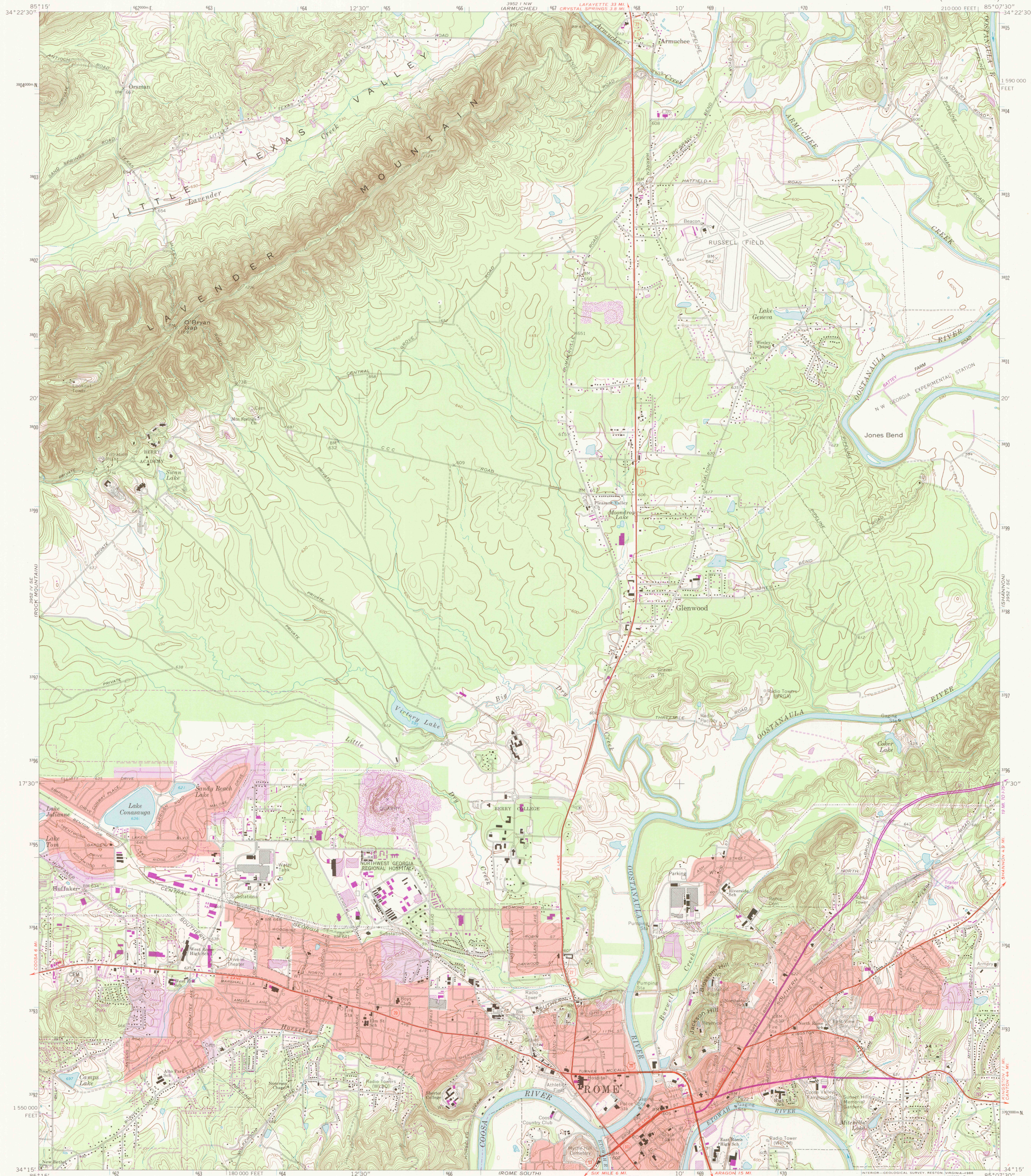
3952 1 NE
(SUMMERVILLE)



U.S. DEPARTMENT OF THE INTERIOR
U.S. GEOLOGICAL SURVEY

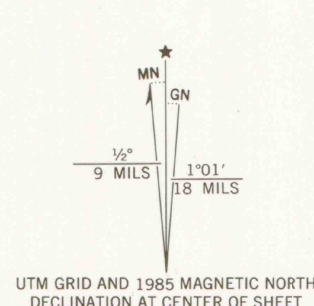
ROME NORTH QUADRANGLE
GEORGIA—FLOYD CO.
7.5 MINUTE SERIES (TOPOGRAPHIC)

3952 1 NE
(PLAINVILLE)



3952 1 NE
(LIVINGSTON)

Mapped, edited, and published by the Geological Survey
Control by USGS, USCGS, USCE, and Georgia Geodetic Survey
Topography by photogrammetric methods from aerial photographs
taken 1964. Field checked 1967
Polyconic projection. 1927 North American datum
10,000-foot grid based on Georgia coordinate system, west zone
1000-meter Universal Transverse Mercator grid ticks,
zone 16, shown in blue
To place on the predicted North American Datum 1983,
move the projection lines 8 meters south and
5 meters west as shown by dashed corner ticks
There may be private inholdings within the boundaries of
the National or State reservations shown on this map
Red tint indicates areas in which only landmark buildings are shown
Fine red dashed lines indicate selected fence and field lines where
generally visible on aerial photographs. This information is unchecked



SCALE 1:24,000
CONTOUR INTERVAL 10 FEET
NATIONAL GEODETIC VERTICAL DATUM OF 1929

THIS MAP COMPLIES WITH NATIONAL MAP ACCURACY STANDARDS
FOR SALE BY U.S. GEOLOGICAL SURVEY, RESTON, VIRGINIA 22092
A FOLDER DESCRIBING TOPOGRAPHIC MAPS AND SYMBOLS IS AVAILABLE ON REQUEST



ROAD CLASSIFICATION
Primary highway, all weather, hard surface
Secondary highway, all weather, hard surface
Light-duty road, all weather, improved surface
Unimproved road, fair or dry weather
U. S. Route
State Route

ROME NORTH, GA.
34085-C2-TF-024
1967
PHOTOREVISED 1985
DMA 3952 1 SW-SERIES V845

