

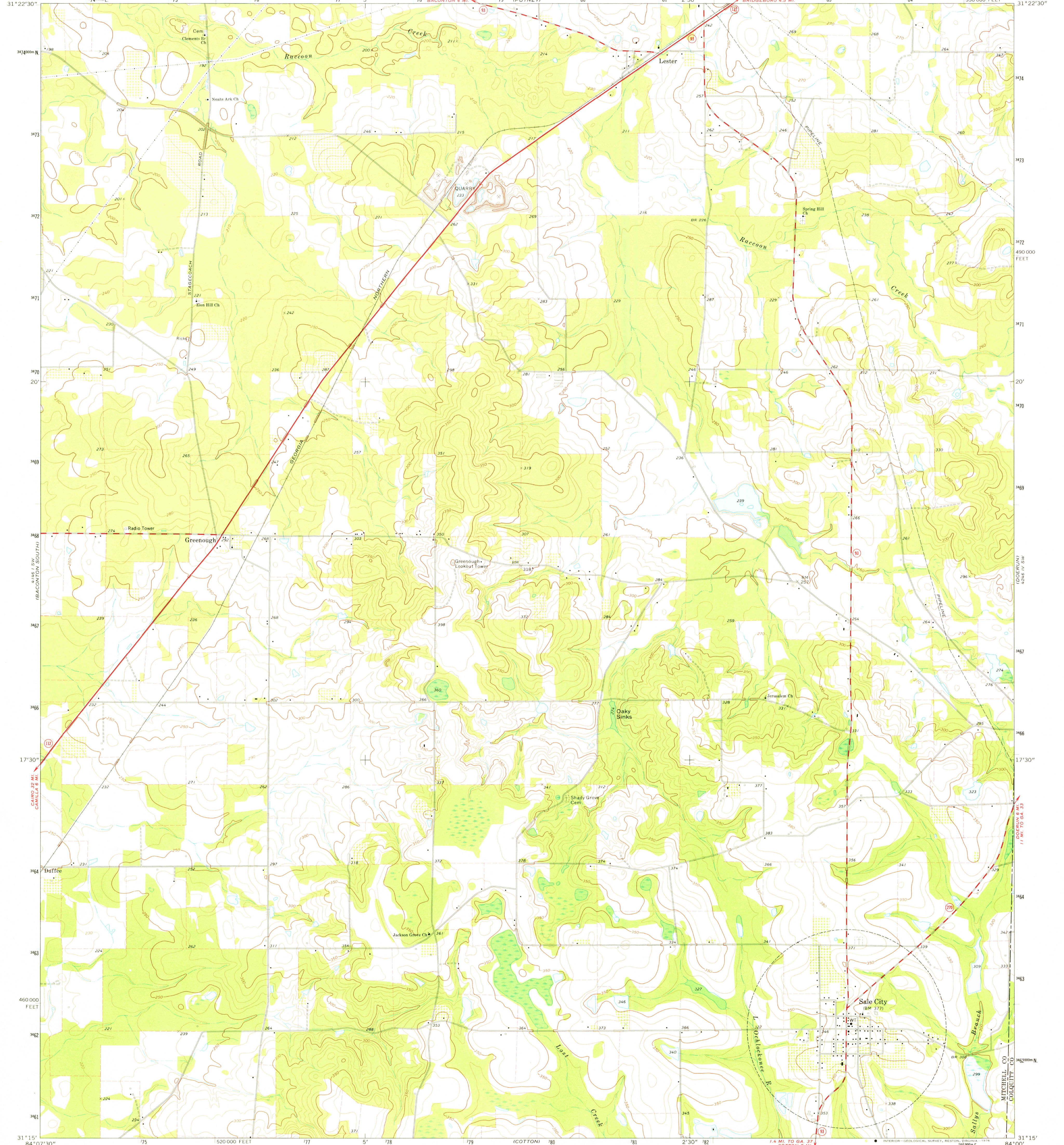
5 58 1/2 IN W
8 1/2 IN H
(NORTH)

UNITED STATES
DEPARTMENT OF THE INTERIOR
GEOLOGICAL SURVEY

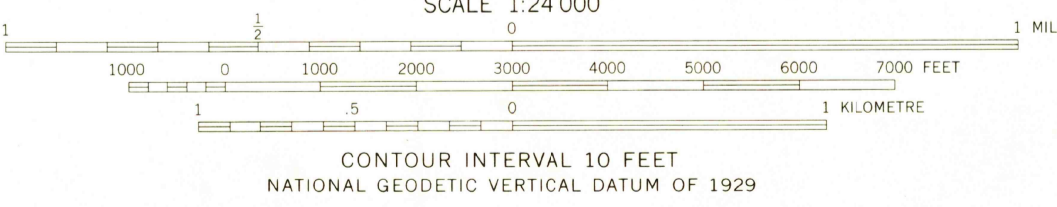
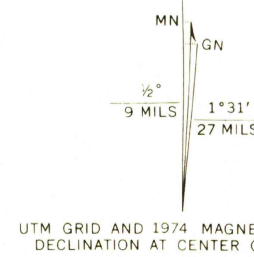
STATE OF GEORGIA
DEPARTMENT OF NATURAL RESOURCES
EARTH AND WATER DIVISION

SALE CITY QUADRANGLE
GEORGIA
7.5 MINUTE SERIES (TOPOGRAPHIC)

8 1/2 IN W
5 58 1/2 IN H
(BRIDGE BOARD)



Mapped, edited, and published by the Geological Survey
Control by USGS and NOS/NOAA
Topography by photogrammetric methods from aerial photographs taken 1974. Field checked 1974
Projection and 10,000-foot grid ticks: Georgia coordinate system, west zone (transverse Mercator)
1000-metre Universal Transverse Mercator grid ticks, zone 16, shown in blue. 1927 North American datum
Fine red dashed lines indicate selected fence and field lines where generally visible on aerial photographs. This information is unchecked



CONTOUR INTERVAL 10 FEET
NATIONAL GEODETIC VERTICAL DATUM OF 1929

THIS MAP COMPLIES WITH NATIONAL MAP ACCURACY STANDARDS
FOR SALE BY U.S. GEOLOGICAL SURVEY, RESTON, VIRGINIA 22092
A FOLDER DESCRIBING TOPOGRAPHIC MAPS AND SYMBOLS IS AVAILABLE ON REQUEST



ROAD CLASSIFICATION	
Primary highway, hard surface	Light-duty road, hard or improved surface
Secondary highway, hard surface	Unimproved road
Interstate Route	U. S. Route
	State Route

SALE CITY, GA.
SE 1/4 BACONTON 15' QUADRANGLE
N3115-W8400/7.5
1974 APR 08 1976
AMS 4146 I SE-SERIES V845

USGS
Historical File
Topographic Division

(CAMILLA)
4 1/2 IN W
4 1/2 IN H

(WETFIELD)
4 1/2 IN W
4 1/2 IN H